

XX DOCUMENT No. **00551** FILED FOR RECORD THE 10th DAY OF September 19 98 AT 8:30 O'CLOCK A. M. BOOK 168 Deeds PAGE 474  
 RECORDING FEE \$ 6.00 BY Lindsay Erdman Recorder  
 TRANSFER FEE \$ ----- BY Deirdre K. Gallagher Deputy

Section 10-96-14  
 As referred to in  
 Engr. Tie Book

Prepared by: Erdman Engineering P.C. 708 Commerce Drive, P.O. Box 246, Decorah Iowa, 52101  
 Phone (319)382-4194, Fax (319)382-3623

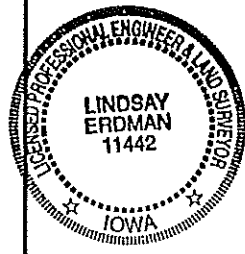
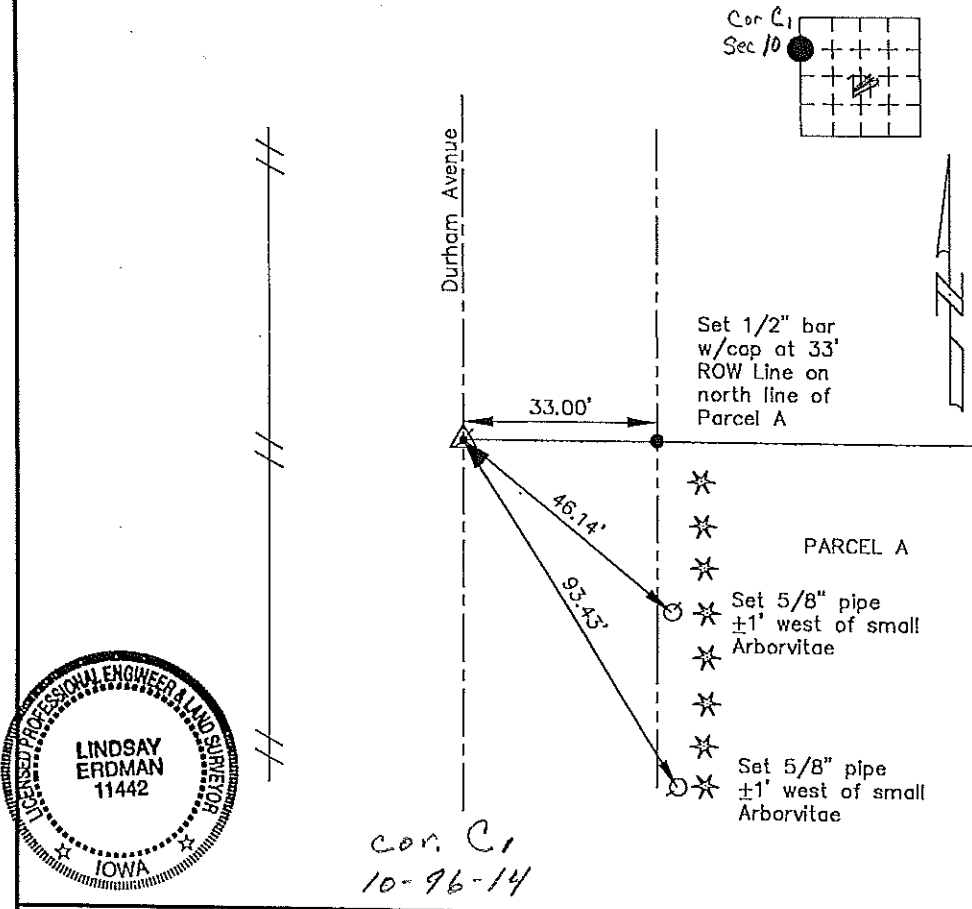
### United States Public Land Survey Corner Certificate

of  
 Land Survey Monuments situated in Section 10 Township 96 Range 14 of the Fifth Principle Meridian,  
Chickasaw County, Iowa. Previously recorded in does not apply in County Recorders Office.

(Show reason for preparing this certificate, the evidence and detailed procedures used in establishing the corner positions and monumentation found or placed.)

**Monument Description and Remarks:** This certificate is prepared in accordance with Section 355.11 of the 1995 Code of Iowa. No previous certificate has been filed for this corner location. We found no record or evidence of WNW 1/8 Corner being set. We found the NW Corner and set the W 1/4 Corner. Based on these two corners we set a 1/2" bar w/cap Iowa RLS #11442 on line and midway between the NW Corner and the W 1/4 at the WNW 1/8 Corner of Section 11, Township 96 North, Range 14 West.

**Plan-View**  
 (Show a minimum of three reference ties to durable physical objects, relevant monuments and physical conditions that will enable recovery of the corner.)



I hereby certify that the survey work was completed and this certificate was prepared by me or under my direct supervision and that I am a duly registered land surveyor under the laws of the State of Iowa.

Signature Lindsay Erdman  
 Lindsay Erdman, P.E. and L.S.  
 Date: 9/2/98 Reg. No. 11442

My license renewal date is December 31, 1998

Corners	Section	Twp.	Range
WNW 1/8	11	96	14

168-474