

XY DOCUMENT No. **00550**
 C RECORDING FEE \$ **6.00**
 M
 S TRANSFER FEE \$ -----

FILED FOR RECORD THE 10th DAY OF September, 1998 AT 8:30 O'CLOCK A.M. BOOK 168 DEEDS PAGE 473
 STATE OF IOWA, CHICKASAW COUNTY
 Recorder
 Deputy

*Section 10-96-14
 As referred to in
 Engg. Tic Book.*

Prepared by: Erdman Engineering P.C. 708 Commerce Drive, P.O. Box 246, Decorah Iowa, 52101
 Phone (319)382-4194, Fax (319)382-3623

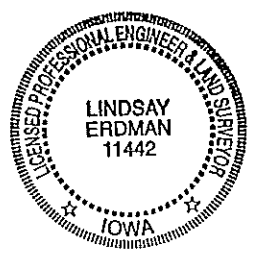
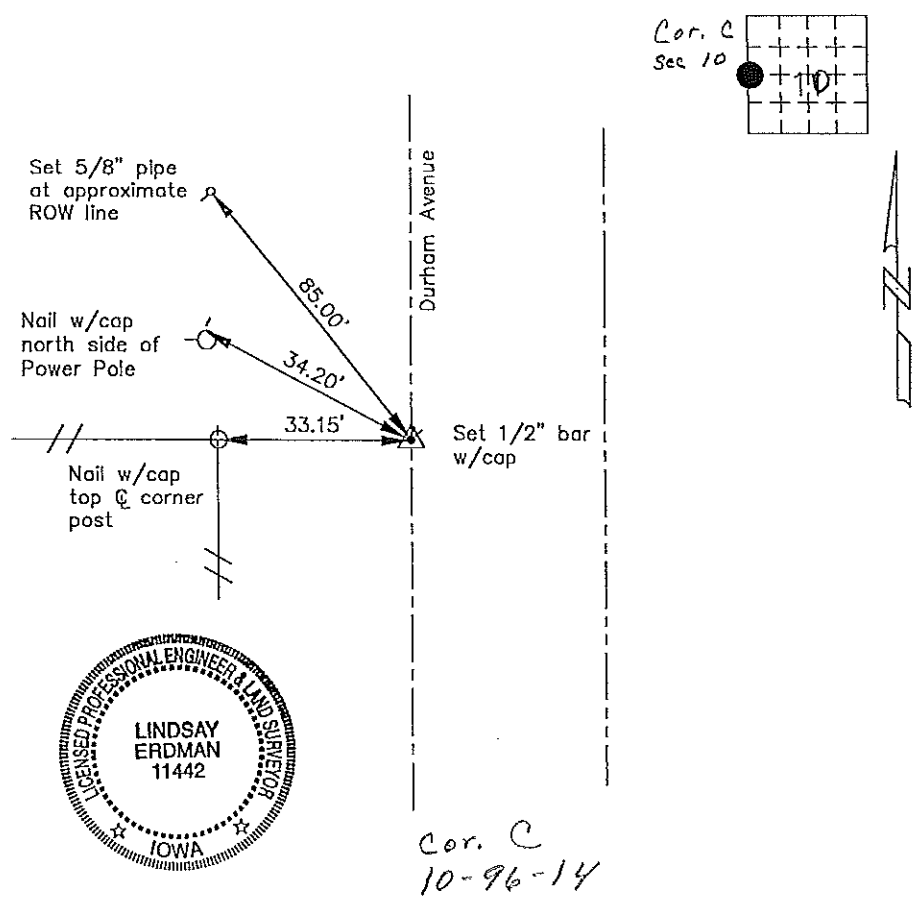
United States Public Land Survey Corner Certificate

of
 Land Survey Monuments situated in Section 11 Township 96 Range 14 of the Fifth Principle Meridian,
Chickasaw County, Iowa. Previously recorded in does not apply in County Recorders Office.

(Show reason for preparing this certificate, the evidence and detailed procedures used in establishing the corner positions and monumentation found or placed.)

Monument Description and Remarks: This certificate is prepared in accordance with Section 355.11 of the 1995 Code of Iowa. No previous certificate has been filed for this corner location. Based on Chickasaw County Engineer's Reference Ties we searched for the stone that had been previously set. We dug a 3' x 2' x 2' hole in line with an existing fence line running west, in the center of the county road. We did not find the stone we found an old wood stake. The stake was in line with the existing fence line and in the center of the county road. We replaced the stake with a 1/2" bar w/cap Iowa RLS #11442 as the W 1/4 Corner of Sec, 11-T96N-R14W.

Plan-View
 (Show a minimum of three reference ties to durable physical objects, relevant monuments and physical conditions that will enable recovery of the corner.)



*Cor. C
 10-96-14*

I hereby certify that the survey work was completed and this certificate was prepared by me or under my direct supervision and that I am a duly registered land surveyor under the laws of the State of Iowa.

Signature Lindsay Erdman
 Lindsay Erdman, P.E. and L.S.
 Date: 9/8/98 Reg. No. 11442

My license renewal date is December 31, 1998

List Corners to be Indexed			
Corners	Section	Twp.	Range
W 1/4	11	96	14