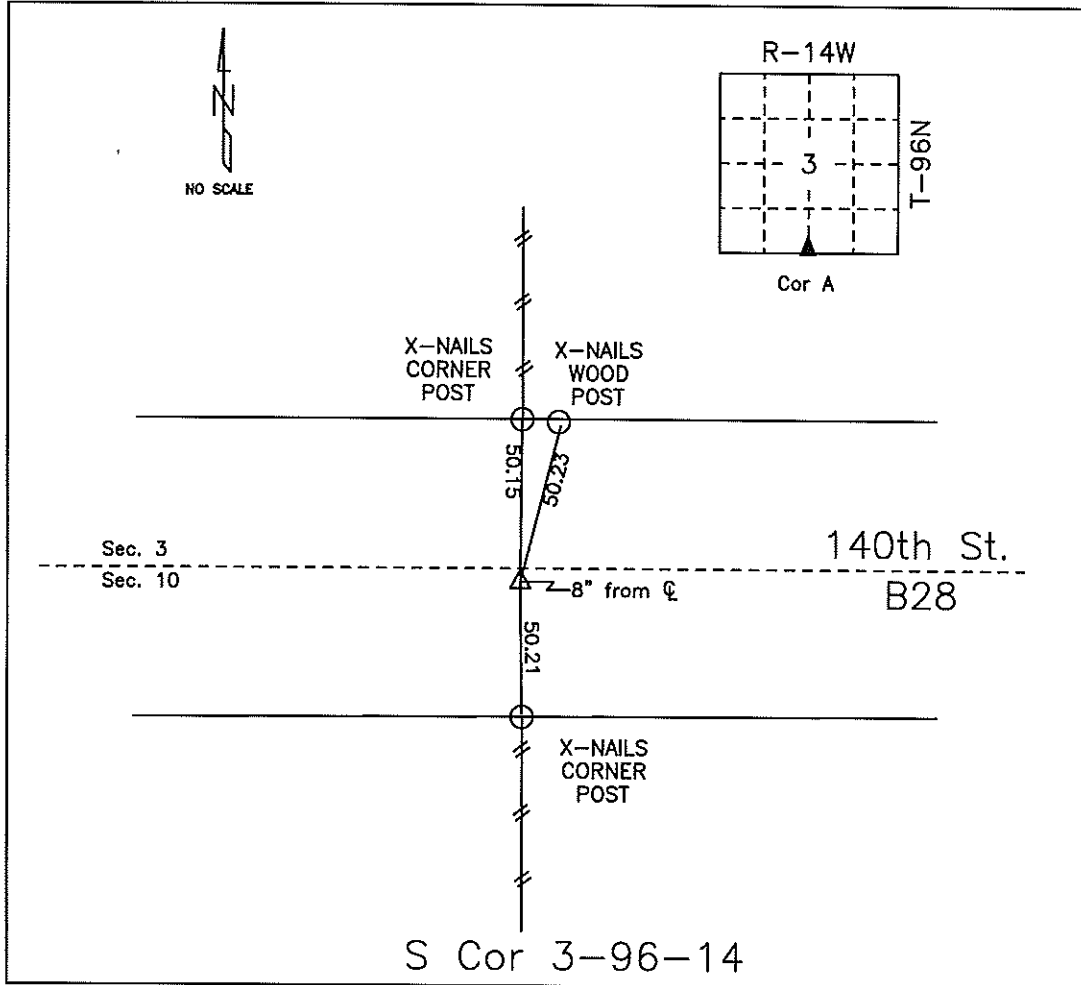


# COUNTY ENGINEER'S SECTION CORNER PRESERVATION RECORD

LAND SURVEY MONUMENT LOCATED IN SECTION 03, TOWNSHIP 96 N  
NORTH, RANGE 14 W, OF THE 5TH P.M. Chickasaw COUNTY, IOWA  
PREVIOUSLY RECORDED COUNTY ENGINEER'S OFFICE



**MONUMENT DESCRIPTION AND NARRATIVE** Set PK-Nail 05/19/09. Previously recorded in

Chickasaw County Engineer's Tie Book. See also project LC-370--73-19, station 184+06.0.

All ties are slope chained

I AM NOT A REGISTERED LAND SURVEYOR UNDER THE LAWS OF THE STATE OF IOWA

JIM FOSTER CHICKASAW CO. DATE: 05/19/09