

Instrument #: 2019-2000
 12/19/2019 12:07:32 PM Total Pages: 1
 SCC SECTION CORNER CERTIFICATES
 Recording Fee: \$ 7.00
 Shirley Trayna, Recorder, Chickasaw County Iowa



Prepared by & Return to Herold - Reicks Surveying, 10 East Main Street, New Hampton, IA 50659, Ph. 641-394-2725

United States Public Land Survey Corner Certificate

Land Survey Monument situated in
 Section 2, Township 96 North, Range 14 West of the Fifth Principal Meridian, Chickasaw County, Iowa.
 On file in **Book 168, Page 478** in the County Recorder's office.

This certificate is being prepared in compliance with Iowa Code Chapter 355.11 because:

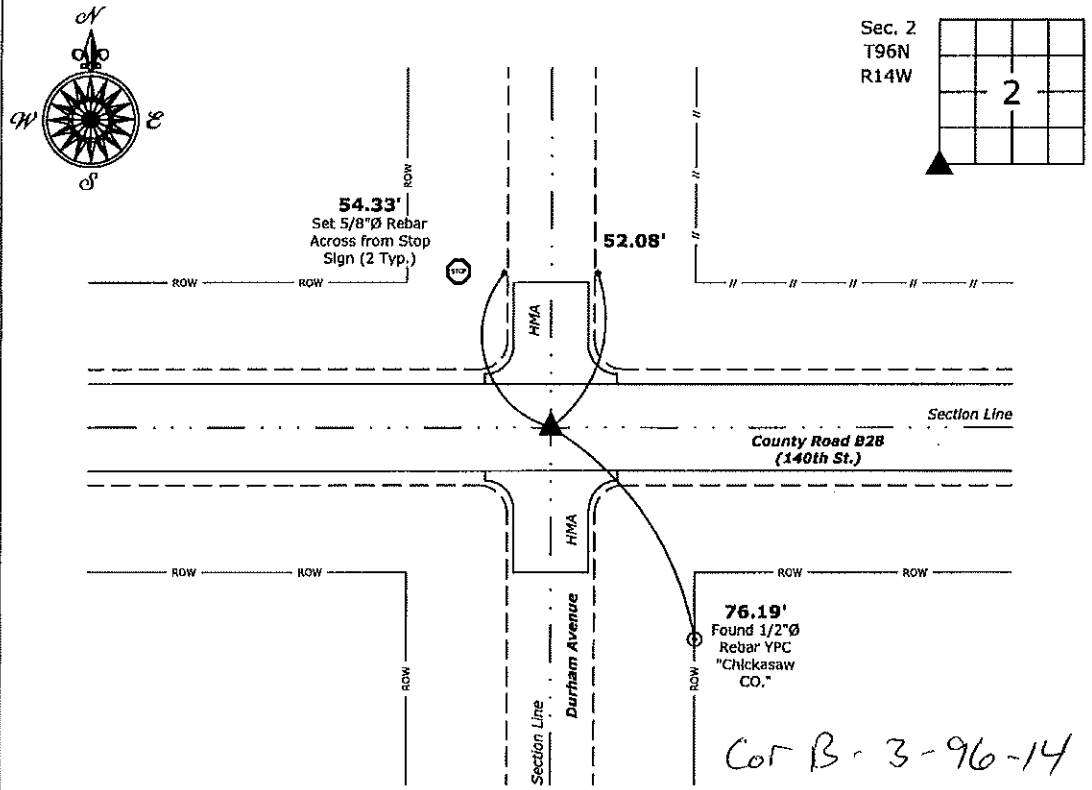
- There is no certificate on file for this corner.
- There are no longer three valid ties of record.
- There are changes to reference ties of record.
- There is change of monumentation of record.
- To clarify description of record monument (ties).

Monument Description and Remarks:

Southwest Corner: Found PK Nail with information obtained from the County Engineer's Office and the previously recorded Section Corner Certificate. Monument type did not change, however Chickasaw County Engineer's Office reset the Corner after a HMA overlay in 2009.

Plan View

(Show a minimum of three reference ties to durable physical objects, relevant monuments and physical conditions that will enable recovery of the corner.)



Southwest Corner of Section 2-96-14
 Found PK Nail



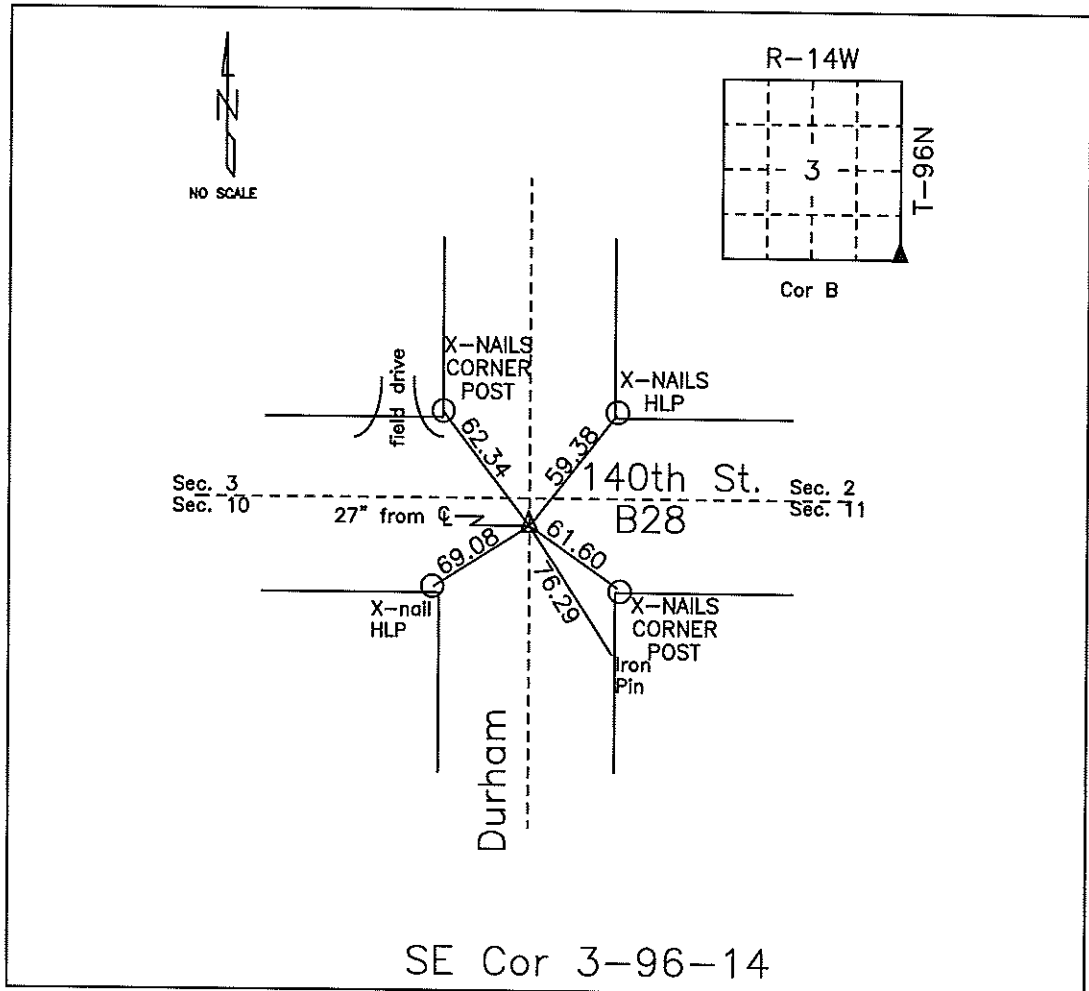
I hereby certify that this land surveying document was prepared and the related survey work was performed by me or under my direct personal supervision and that I am a duly licensed Land Surveyor under the laws of the State of Iowa.
Kirk D. Reicks 12-19-19
 Kirk D. Reicks Date:
 License number 19211
 My license renewal date is December 31, 2020.
 Sheets covered by this seal: Individual sheet only

List Corner to be Indexed			
Corner	Section	Twp.	Range
SW	2	96	14
Project Number: 2019-118			
FB: Chickasaw 9, Pgs. 65-67			

File: S:\Projects - NHO\County Control Systems - NHO\CHICKASAW\CHICK-10.dwg, 12/19/2019 10:59:32 AM

COUNTY ENGINEER'S SECTION CORNER PRESERVATION RECORD

LAND SURVEY MONUMENT LOCATED IN SECTION 03, TOWNSHIP 96 N
NORTH, RANGE 14 W, OF THE 5TH P.M. Chickasaw COUNTY, IOWA
PREVIOUSLY RECORDED COUNTY ENGINEER'S OFFICE



MONUMENT DESCRIPTION AND NARRATIVE Set PK-Nail 05/19/09. Previously recorded by

Lindsay Erdman in Book 168, page 478 as NW corner of section 11-96-14. See also project

LC-370--73-19, station 210+94.5.

All ties are slope chained

I AM NOT A REGISTERED LAND SURVEYOR UNDER THE LAWS OF THE STATE OF IOWA

JIM FOSTER CHICKASAW CO. DATE: 05/19/09

XY
 DOCUMENT No. 00555 FILED FOR RECORD THE 10th DAY OF September, 1998 AT 8:30 O'CLOCK A. M. BOOK 168 Deeds PAGE 478

RECORDING FEE \$ 6.00 STATE OF IOWA, CHICKASAW COUNTY. Lindsay Erdman Recorder
 TRANSFER FEE \$ --- Debra K. Halperin Deputy

Prepared by: Erdman Engineering P.C. 708 Commerce Drive, P.O. Box 246, Decora, Iowa, 52101
 Phone (319)382-4194, Fax (319)382-3623

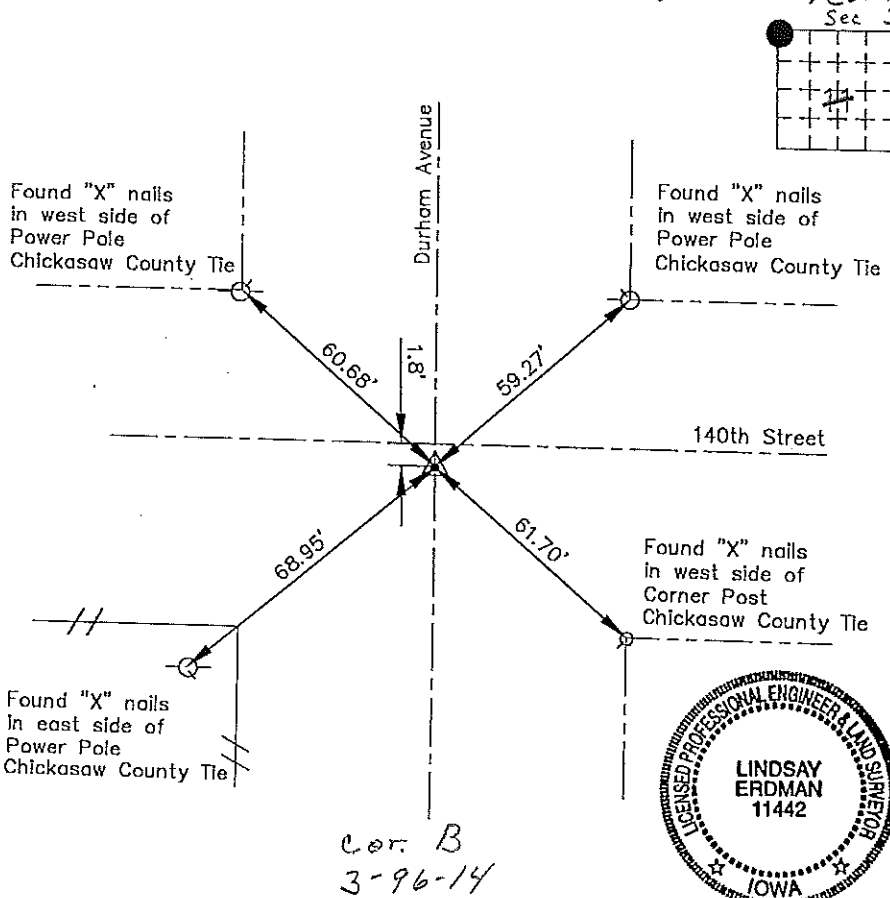
United States Public Land Survey Corner Certificate

of 3
 Land Survey Monuments situated in Section 3 Township 96 Range 14 of the Fifth Principle Meridian, Chickasaw County, Iowa. Previously recorded in does not apply in County Recorders Office.

(Show reason for preparing this certificate, the evidence and detailed procedures used in establishing the corner positions and monumentation found or placed.)

Monument Description and Remarks: This certificate is prepared in accordance with Section 355.11 of the 1995 Code of Iowa. No previous certificate has been filed for this corner location. Based on Chickasaw County Engineer's Reference Ties We found 4 sets of "X" nails used as tie markers. From these ties we found a P.K. nail 1.8' south of the C of the A.C.C. paving that matches the description of corner being used as the NW Corner of Section 11, Township 96 North, Range 14 West.

Plan-View
 (Show a minimum of three reference ties to durable physical objects, relevant monuments and physical conditions that will enable recovery of the corner.) Cor B



Section 3-96-14
 As referred to in
 Engr. Tie Book

I hereby certify that the survey work was completed and this certificate was prepared by me or under my direct supervision and that I am a duly registered land surveyor under the laws of the State of Iowa.

Signature Lindsay Erdman
 Lindsay Erdman, P.E. and L.S.
 Date: 9/9/98 Reg. No. 11442

My license renewal date is December 31, 1998

Corners	Section	Twp.	Range
NW	11	96	14

168 478