



Prepared by & Return to: Herold - Reicks Surveying, 10 East Main Street, New Hampton, IA 50659, Ph. 641-394-2725

### United States Public Land Survey Corner Certificate

Land Survey Monument situated in  
 Section 2, Township 96 North, Range 14 West of the Fifth Principal Meridian, Chickasaw County, Iowa.  
 On file in **Book 168, Page 476** in the County Recorder's office.

This certificate is being prepared in compliance with Iowa Code Chapter 355.11 because:



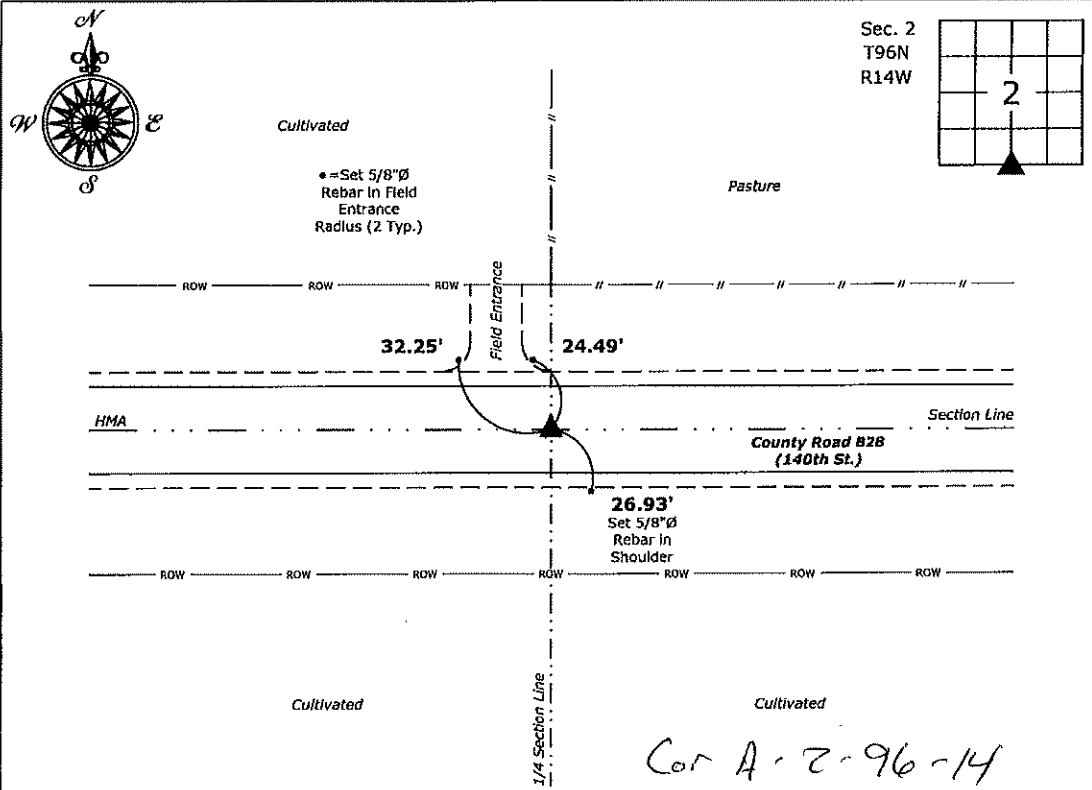
- There is no certificate on file for this corner.
- There are no longer three valid ties of record.
- There are changes to reference ties of record.
- There is change of monumentation of record.
- To clarify description of record monument (ties).

**Monument Description and Remarks:**

**South 1/4 Corner:** Found PK Nail with information obtained from the County Engineer's Office and the previously recorded Section Corner Certificate. Monument type did not change, however Chickasaw County Engineer's Office reset the Corner after a HMA overlay in 2009.

### Plan View

(Show a minimum of three reference ties to durable physical objects, relevant monuments and physical conditions that will enable recovery of the corner.)



**South 1/4 Corner of Section 2-96-14**  
 Found PK Nail

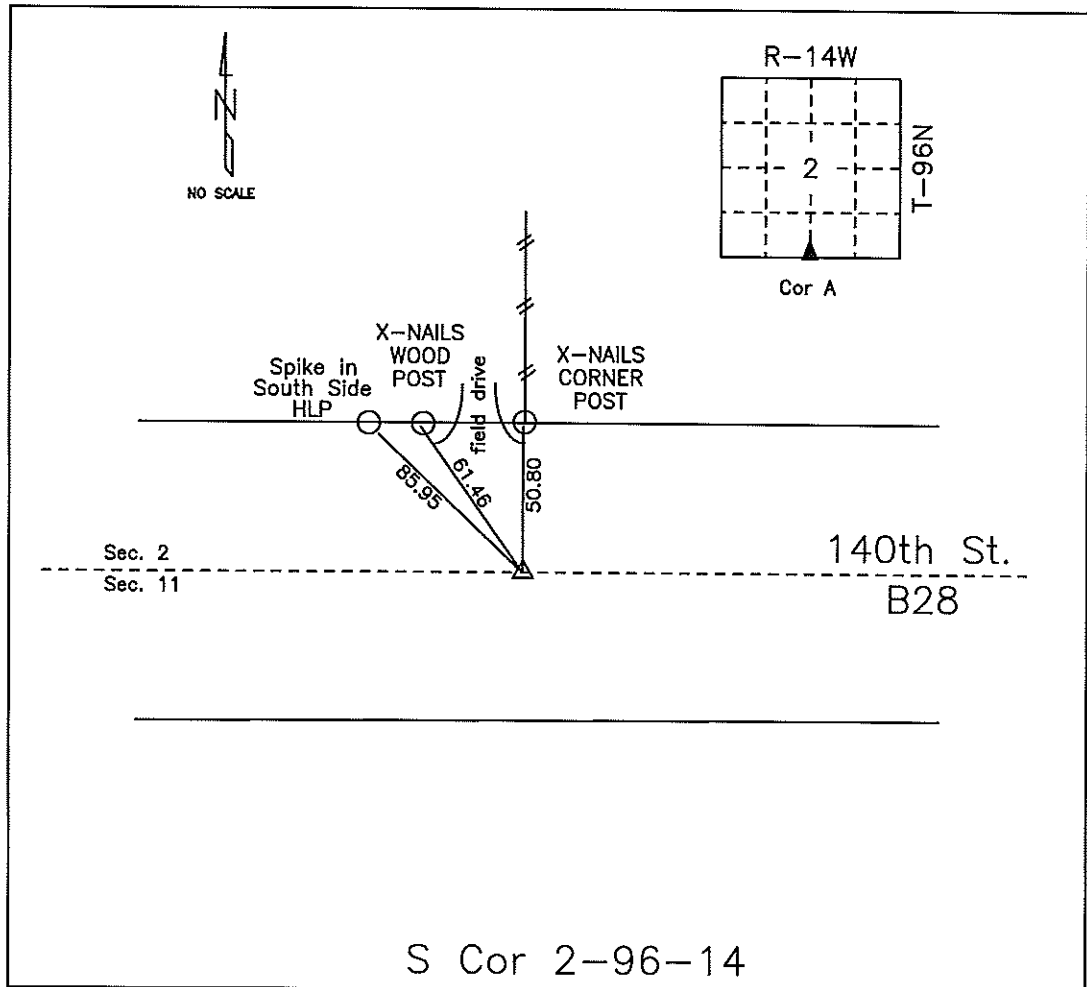


I hereby certify that this land surveying document was prepared and the related survey work was performed by me or under my direct personal supervision and that I am a duly licensed Land Surveyor under the laws of the State of Iowa.  
*Kirk D. Reicks* 12-19-19  
 Kirk D. Reicks Date:  
 License number 19211  
 My license renewal date is December 31, 2020.  
 Sheets covered by this seal: Individual sheet only

List Corner to be Indexed			
Corner	Section	Twp.	Range
S 1/4	2	96	14
Project Number: 2019-118			
FB: Chickasaw 9, Pgs. 65-67			

# COUNTY ENGINEER'S SECTION CORNER PRESERVATION RECORD

LAND SURVEY MONUMENT LOCATED IN SECTION 02, TOWNSHIP 96 N  
NORTH, RANGE 14 W, OF THE 5TH P.M. Chickasaw COUNTY, IOWA  
PREVIOUSLY RECORDED COUNTY ENGINEER'S OFFICE



**MONUMENT DESCRIPTION AND NARRATIVE** Set PK-Nail 05/19/09. Previously recorded by  
Lindsay Erdman in Book 168, page 476. See also project LC-370--73-19, station 237+02.1.

All ties are slope chained

I AM NOT A REGISTERED LAND SURVEYOR UNDER THE LAWS OF THE STATE OF IOWA

JIM FOSTER CHICKASAW CO. DATE: 05/19/09

DOCUMENT No. 00553 FILED FOR RECORD THE 10th DAY OF September, 1998 AT 8:30 O'CLOCK A.M. BOOK 168 Deeds PAGE 476  
 RECORDING FEE \$ 6.00 TRANSFER FEE \$ ---

STATE OF IOWA, CHICKASAW COUNTY  
 By: Leitha N. Ross Recorder  
Clara K. Halligan Deputy

Prepared by: Erdman Engineering P.C. 708 Commerce Drive, P.O. Box 246, Decorah Iowa, 52101  
 Phone (319)382-4194, Fax (319)382-3623

United States Public Land Survey Corner Certificate

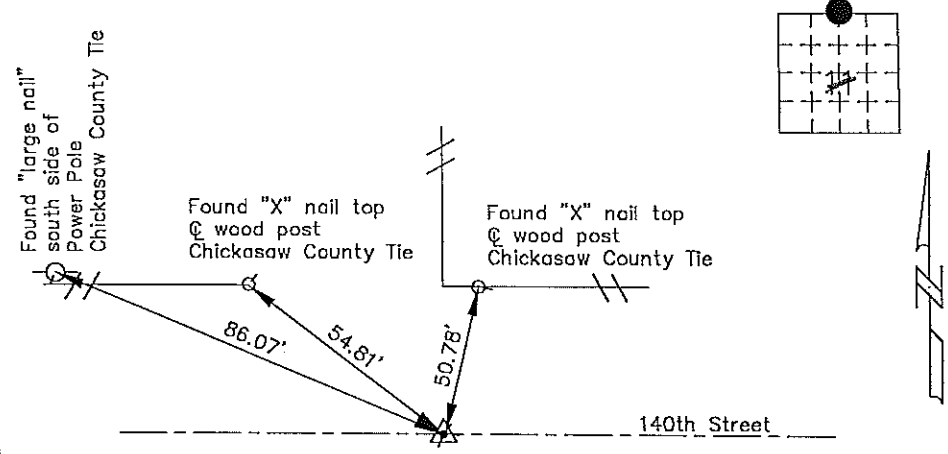
of 2  
 Land Survey Monuments situated in Section 11 Township 96 Range 14 of the Fifth Principle Meridian,  
Chickasaw County, Iowa. Previously recorded in does not apply County Recorders Office.

(Show reason for preparing this certificate, the evidence and detailed procedures used in establishing the corner positions and monumentation found or placed.)

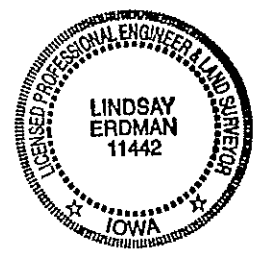
Monument Description and Remarks: This certificate is prepared in accordance with Section 355.11  
 of the 1995 Code of Iowa. No previous certificate has been filed for this corner location. Based on  
 Chickasaw County Engineer's Reference Ties we found two sets of "X" nails and a "large nail" used  
 as tie markers. Based on these ties we found a P.K. nail that matches the description of the  
 corner being used as the N 1/4 corner of Section 11, Township 96 North, Range 14 West.

Section 2-96-14  
 As referred to in  
 Engg. Tie Book

Plan-View  
 (Show a minimum of three reference ties to durable physical objects, relevant  
 monuments and physical conditions that will enable recovery of the corner.)



Cor. A  
 2-96-14



I hereby certify that the survey work was completed and this certificate was prepared by me or under my direct supervision and that I am a duly registered land surveyor under the laws of the State of Iowa.

Signature: Lindsay Erdman  
 Lindsay Erdman, P.E. and L.S.  
 Date: 9/8/98 Reg. No. 11442

Corners	List Corners to be Indexed		
	Section	Twp.	Range
N 1/4	11	96	14

My license renewal date is December 31, 1998

UNITED STATES PUBLIC LAND SURVEY CORNER CERTIFICATE

OF

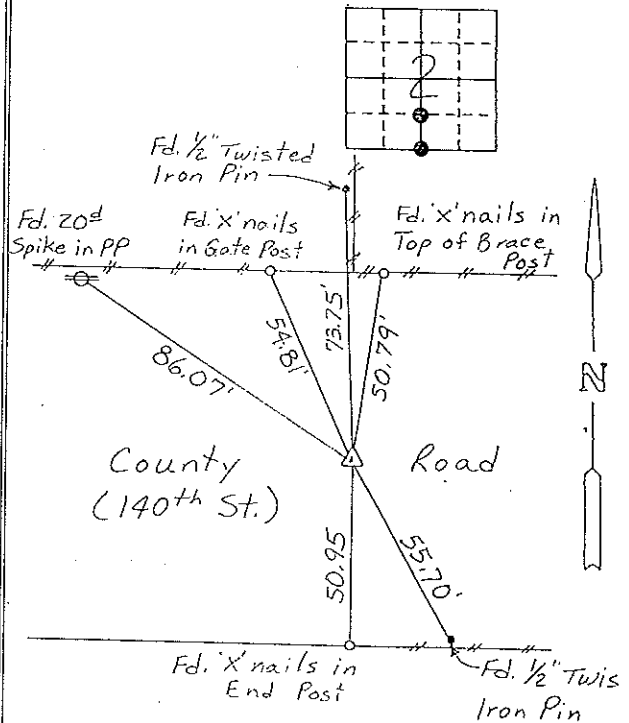
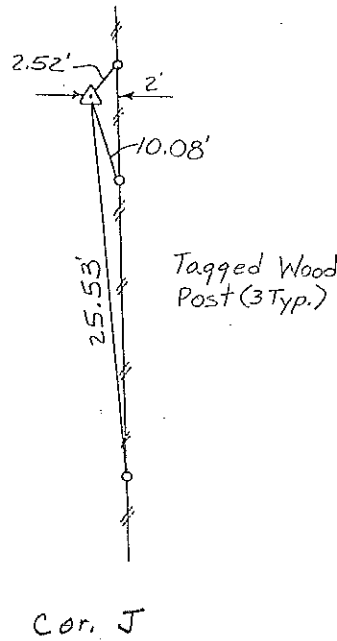
Land Survey Monuments situated in Section 2, Township 96 NORTH, Range 14 WEST, of the Fifth Principal Meridian, CHICKASAW County, Iowa. Previously recorded in NONE in County Recorder's Office.

(Show reason for preparing this certificate, the evidence and detailed procedures used in establishing the corner positions and monumentation found or placed.)

Monument Description and Remarks: NW CORNER, SW 1/4 - SE 1/4 SECTION 2-T96N-R14W:  
Found 1/2" Rebar with cap #7060.  
S 1/4 CORNER, SECTION 2-T96N-R14W: Found PK Nail.

PLAN - VIEW

(Show a minimum of three reference ties to durable physical objects, relevant monuments and physical conditions that will enable recovery of the corner.)



NW CORNER  
SW 1/4 - SE 1/4 SECTION 2-T96N-R14W

Cor A  
S 1/4 CORNER, SECTION 2-T96N-R14W

I hereby certify that the survey work was completed and this certificate was prepared by me or under my direct personal supervision and that I am a duly registered land surveyor under the laws of the state of Iowa.

Signature: Gary L. Casady  
Name typed or printed: Gary L. Casady

Date: 6-18-93 Reg. No. 12532  
My Registration Expires December 31, 1994

Corners	List Corners to be Indexed	Section	Twp	Range
NW Cor.		2	96N	14W
SW 1/4 - SE 1/4		2	96N	14W
S 1/4	COR-A	2	96N	14W

Placed in the Book 6/18/93



SEAL