

XX DOCUMENT No. **00552** FILED FOR RECORD THE 10th DAY OF September, 1998 AT 8:30 O'CLOCK A.M. BOOK 168 DEEDS PAGE 475  
 RECORDING FEE \$ 6.00 STATE OF IOWA, CHICKASAW COUNTY  
 TRANSFER FEE \$ --- BY Lindsay Erdman Recorder  
Debra K. Hallgren Deputy

Prepared by: Erdman Engineering P.C. 708 Commerce Drive, P.O. Box 246, Decorah Iowa, 52101  
 Phone (319)382-4194, Fax (319)382-3623

### United States Public Land Survey Corner Certificate of

Land Survey Monuments situated in Section 11 Township 96 Range 14 of the Fifth Principle Meridian, Chickasaw County, Iowa. Previously recorded in does not apply In County Recorders Office.

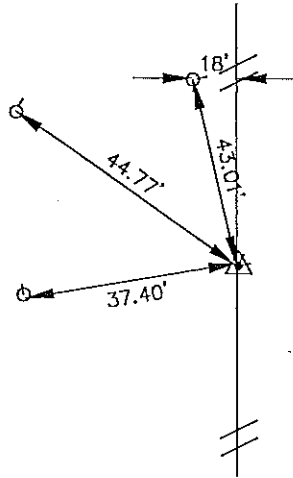
(Show reason for preparing this certificate, the evidence and detailed procedures used in establishing the corner positions and monumentation found or placed.)

Monument Description and Remarks: This certificate is prepared in accordance with Section 355.11 of the 1995 Code of Iowa. No previous certificate has been filed for this corner location. We found no record or evidence of the N 1/8 Corner being set. We found the N 1/4 Corner, and set the S 1/4 Corner from county ties. We computed the location of the Center Section on line and 2632.7" (from County Engineer's Records) north of the S 1/4 Corner. We set the N 1/8 Corner on line and midway between the N 1/4 Corner and the Center Section. We set a 1/2" bar w/cap Iowa RLS #11442 at the N 1/8 Corner of Sec. 11-T96N-R14W.

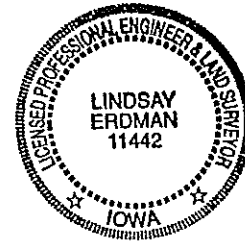
Plan-View

(Show a minimum of three reference ties to durable physical objects, relevant monuments and physical conditions that will enable recovery of the corner.)

All ties are 5/8" pipe in uncultivated area of field



Cor. Y



I hereby certify that the survey work was completed and this certificate was prepared by me or under my direct supervision and that I am a duly registered land surveyor under the laws of the State of Iowa.

Signature Lindsay Erdman  
 Lindsay Erdman, P.E. and L.S.

Date: 9/8/98 Reg. No. 11442

My license renewal date is December 31, 1998

Corners	List Corners to be Indexed		
	Section	Twp.	Range
N 1/8	11	96	14

168-475