

2002 JUL 3 AM 9 13

CINDY MESSERSMITH
COUNTY RECORDER

TeKIPPE ENGINEERING, P.C., 128 South Vine Street, West Union, Iowa 52175 Phone (563) 422-5131

UNITED STATES PUBLIC LAND SURVEY CORNER CERTIFICATE

OF

Land Survey Monuments situated in Section 12, Township 96 North, Range 14 West of the Fifth Principal Meridian, CHICKASAW County, Iowa.

Previously recorded in none in County Recorder's Office.
(book, page, document number, etc.)

(Show reason for preparing this certificate, the evidence and detailed procedures used in establishing the corner positions and monumentation found or placed.)

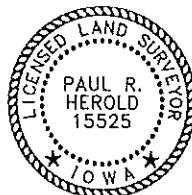
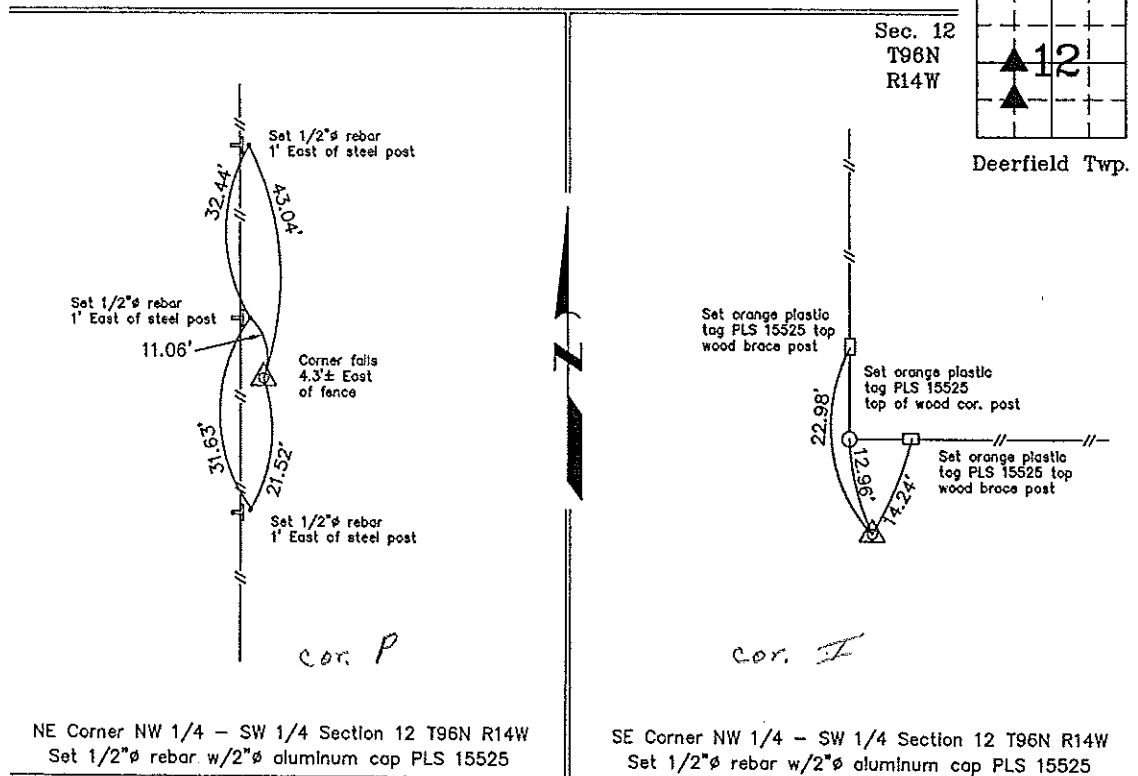
Monument Description and Remarks: NE Corner NW 1/4 - SW 1/4 Section 12 T96N R14W:
Set 1/2"Ø rebar w/2"Ø aluminum cap PLS 15525 edquidistant and on line between the W 1/4 Corner and the Center of the Section.

SE Corner NW 1/4 - SW 1/4 Section 12 T96N R14W: Set 1/2"Ø rebar w/2"Ø aluminum cap PLS 15525 at the intersection of 1/4-1/4 Section Lines after the standard mathematical subdivision of the Section.

PLAN - VIEW

129614i.dwg Project Number 02094.IS
FB. 46J PG. 10-13

(Show a minimum of three reference ties to durable physical objects, relevant monuments and physical conditions that will enable recovery of the corner.)



I hereby certify that this land surveying document was prepared and the related survey work was performed by me or under my direct personal supervision and that I am a duly licensed Land Surveyor under the laws of the State of Iowa.

Paul R. Herold 7-2-02
Paul R. Herold Date
License number 15525
My license renewal date is December 31, 2002.
Sheets covered by this seal: Individual

List Corners to be Indexed			
Corners	Section	Twp.	Range
NE-NW-SW	12	96N	14W
SE-NW-SW	12	96N	14W

County Expires
7/2/02