

2002 JUL 3 AM 9 11

CINDY MESSERSMITH
 COUNTY RECORDER

TekIPPE ENGINEERING, P.C., 128 South Vine Street, West Union, Iowa 52176 Phone (563) 422-6131

UNITED STATES PUBLIC LAND SURVEY CORNER CERTIFICATE

OF

Land Survey Monuments situated in Section 12, Township 96 North, Range 14 West of the Fifth Principal Meridian, CHICKASAW County, Iowa. Previously recorded in none in County Recorder's Office.
(book, page, document number, etc.)

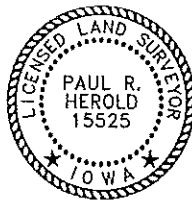
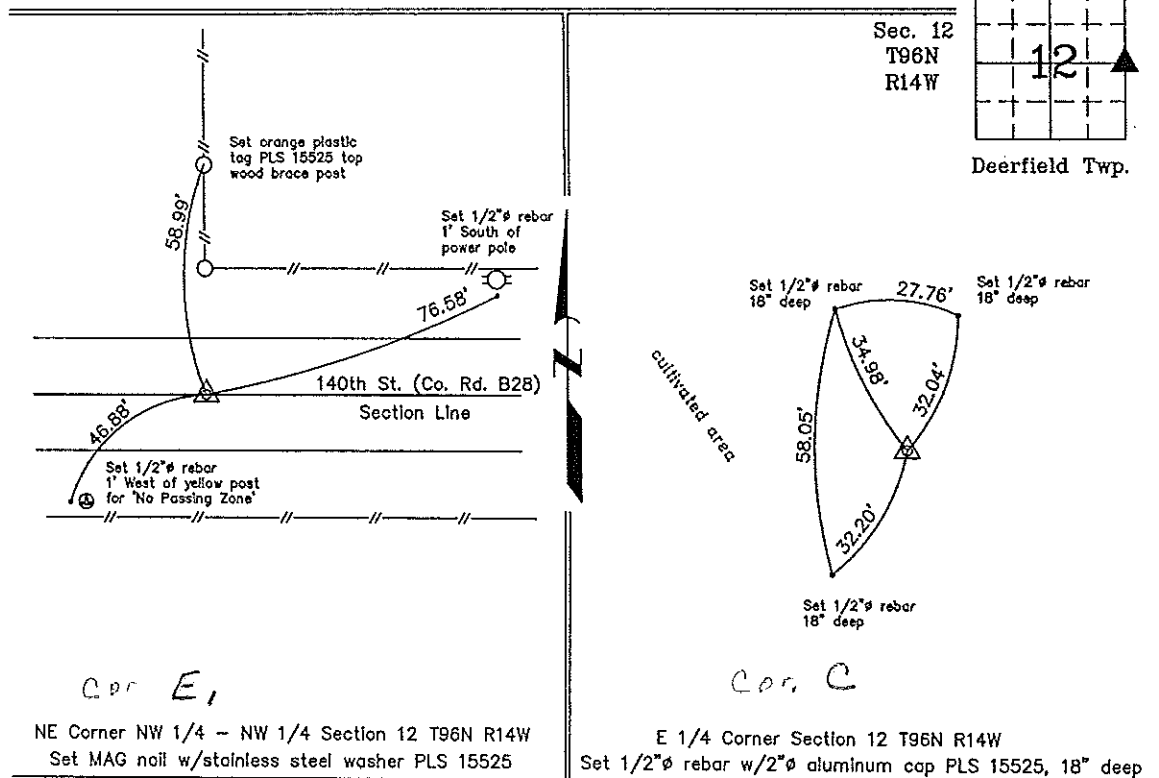
(Show reason for preparing this certificate, the evidence and detailed procedures used in establishing the corner positions and monumentation found or placed.)

Monument Description and Remarks: **NE Corner NW 1/4 - NW 1/4 Section 12 T96N R14W:**
 Set MAG nail w/stainless steel washer PLS 15525 equidistant and on line between the NW Corner and the N 1/4 Corner.
E 1/4 Corner Section 12 T96N R14W: Set 1/2" ϕ rebar w/2" ϕ aluminum cap PLS 15525, 18" deep, equidistant and on line between the the SE Corner and the NE Corner as on a Survey and Plat made by Lindsay Erdman, Recorded February 18, 1997, in Book 163, Pages 314-315.

PLAN - VIEW

129614bo.dwg Project Number 02094.IS
 FB. 46J PG. 10-13

(Show a minimum of three reference ties to durable physical objects, relevant monuments and physical conditions that will enable recovery of the corner.)



I hereby certify that this land surveying document was prepared and the related survey work was performed by me or under my direct personal supervision and that I am a duly licensed Land Surveyor under the laws of the State of Iowa.

Paul R. Herold 7-2-02
 Paul R Herold Date

License number 15525
 My license renewal date is December 31, 2002.
 Sheets covered by this seal: Individual

List Corners to be Indexed			
Corners	Section	Twp.	Range
NE-NW-NW	12	96N	14W
E 1/4	12	96N	14W

Filed 7-9-02

County Engineer's Copy