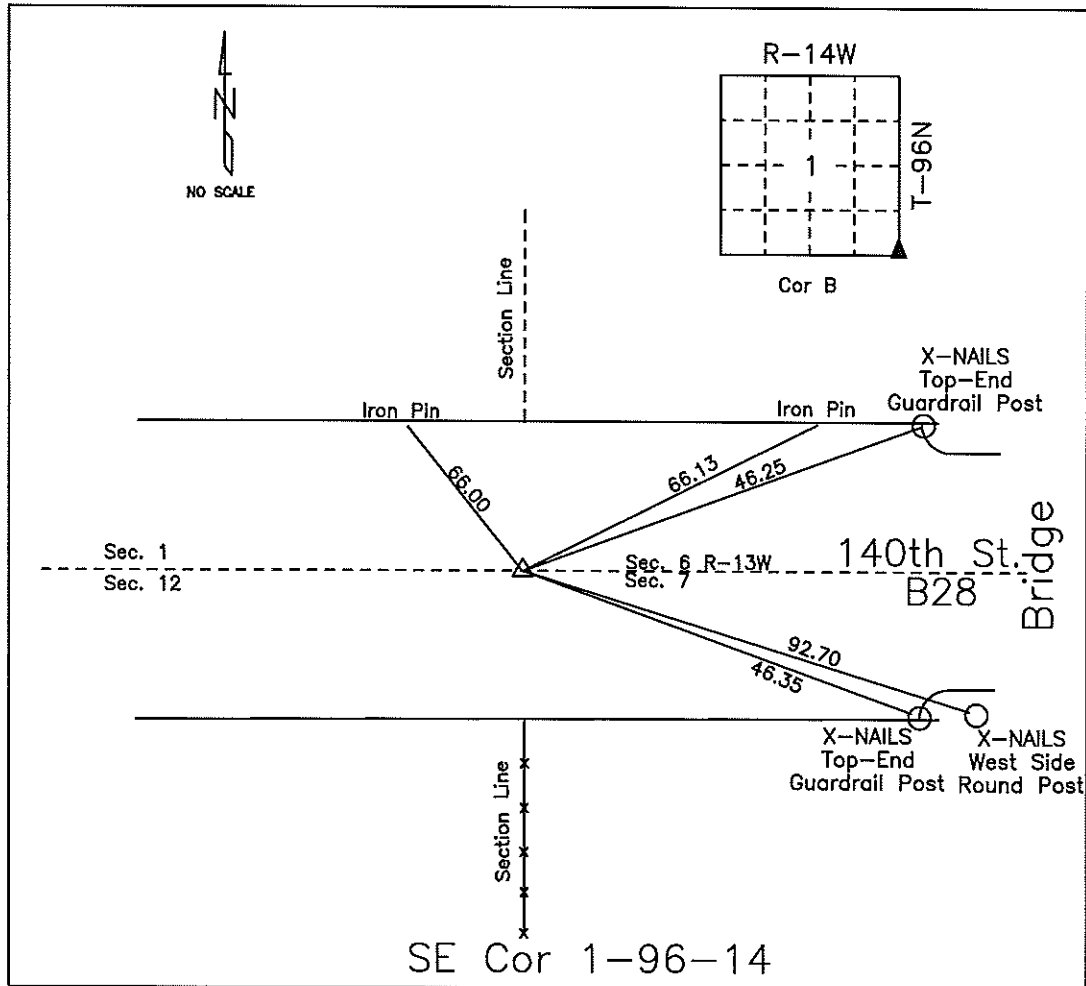


COUNTY ENGINEER'S SECTION CORNER PRESERVATION RECORD

LAND SURVEY MONUMENT LOCATED IN SECTION 01, TOWNSHIP 96 N
 NORTH, RANGE 14 W, OF THE 5TH P.M. Chickasaw COUNTY, IOWA
 PREVIOUSLY RECORDED COUNTY ENGINEER'S OFFICE



MONUMENT DESCRIPTION AND NARRATIVE Set PK-Nail 05/19/09. Previously recorded as
NW corner of section 7-96-13 by Lindsay Edman. Also see project LC-370--73-19, sta 315+97.4.

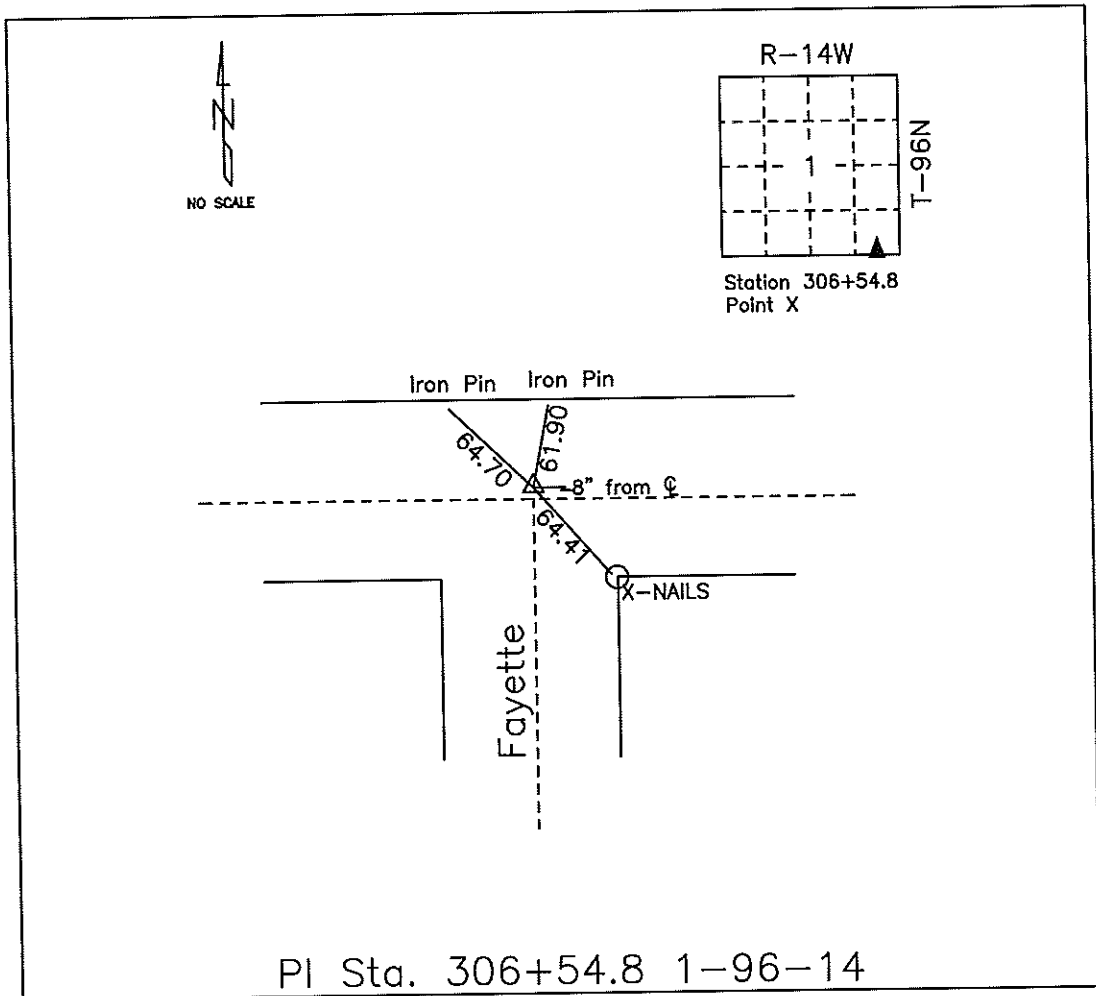
All ties are slope chained.

I AM NOT A REGISTERED LAND SURVEYOR UNDER THE LAWS OF THE STATE OF IOWA

JIM FOSTER CHICKASAW CO. DATE: 05/19/09

COUNTY ENGINEER'S SECTION CORNER PRESERVATION RECORD

LAND SURVEY MONUMENT LOCATED IN SECTION 01, TOWNSHIP 96 N
NORTH, RANGE 14 W, OF THE 5TH P.M. Chickasaw COUNTY, IOWA
PREVIOUSLY RECORDED COUNTY ENGINEER'S OFFICE.



MONUMENT DESCRIPTION AND NARRATIVE Set PK-Nail 05/19/09. Previously recorded in
In Chickasaw County Engineer's Tie Book as Point X. See also project LC-370--73-19, station 306+54.8.

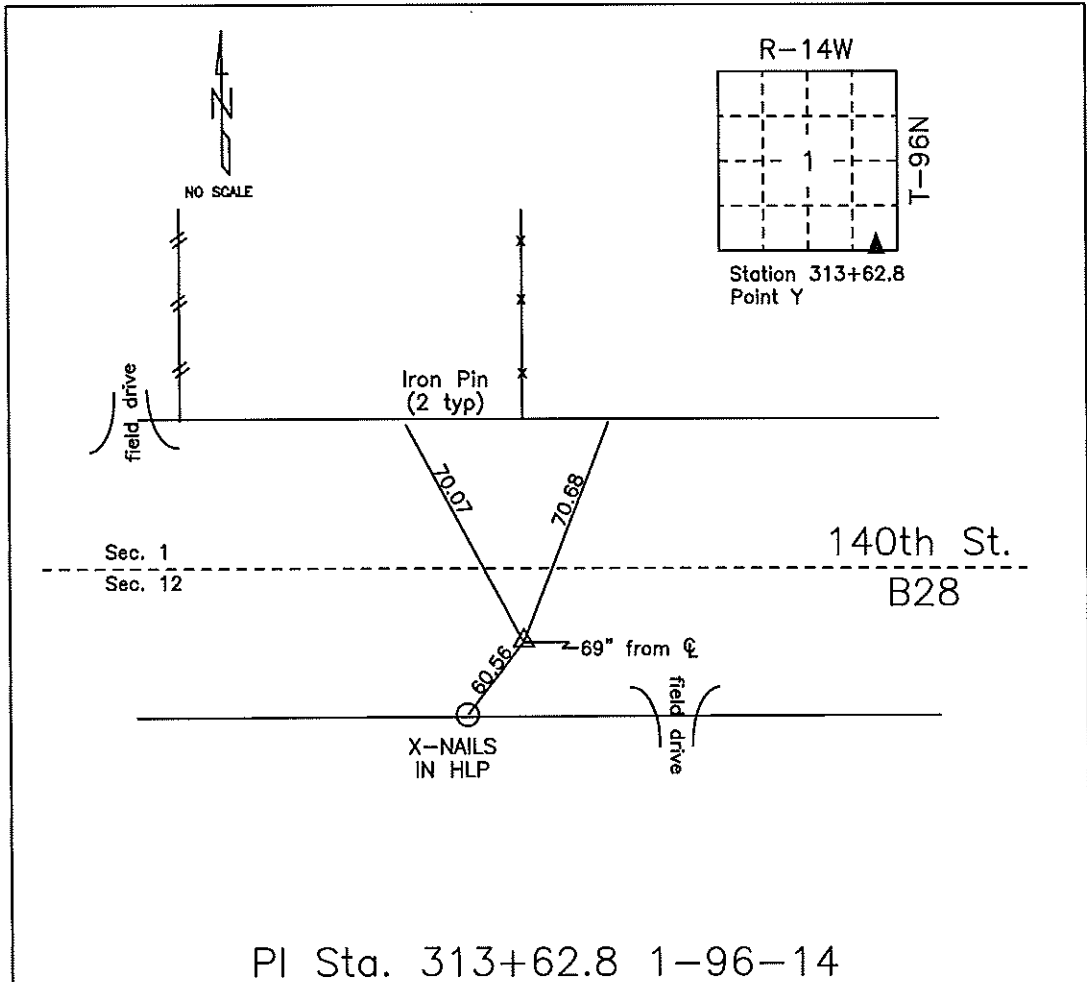
All ties are slope chained.

I AM NOT A REGISTERED LAND SURVEYOR UNDER THE LAWS OF THE STATE OF IOWA

JIM FOSTER CHICKASAW CO. DATE: 05/19/09

COUNTY ENGINEER'S SECTION CORNER PRESERVATION RECORD

LAND SURVEY MONUMENT LOCATED IN SECTION 01, TOWNSHIP 96 N
NORTH, RANGE 14 W, OF THE 5TH P.M. Chickasaw COUNTY, IOWA
PREVIOUSLY RECORDED COUNTY ENGINEER'S OFFICE.



MONUMENT DESCRIPTION AND NARRATIVE Set PK-Nail 05/19/09. Previously recorded
as Point Y in Chickasaw County Engineer's Tie Book. Also see project LC-370--73-19 station 313+62.8.

All ties are slope chained

I AM NOT A REGISTERED LAND SURVEYOR UNDER THE LAWS OF THE STATE OF IOWA

JIM FOSTER CHICKASAW CO. DATE: 05/19/09