

FILED 41.00
2004 JAN 13 AM 8 53

CINDY MESSERSMITH
COUNTY RECORDER

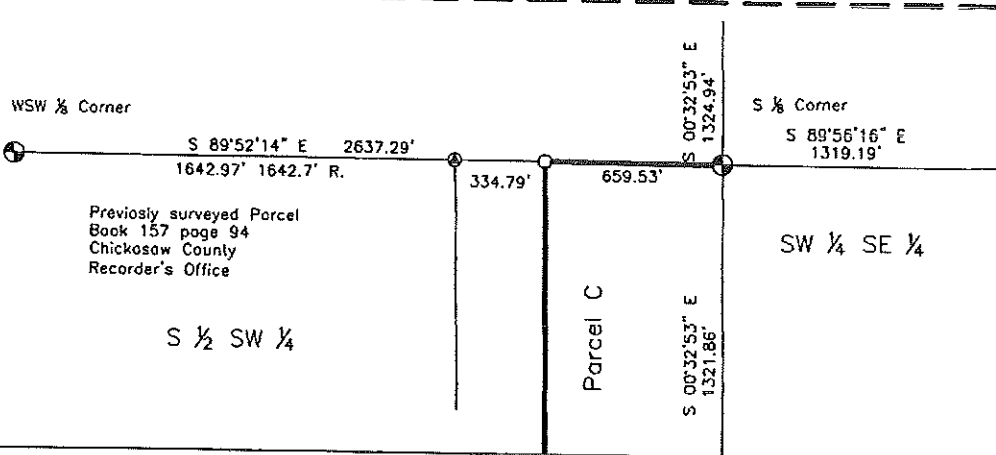
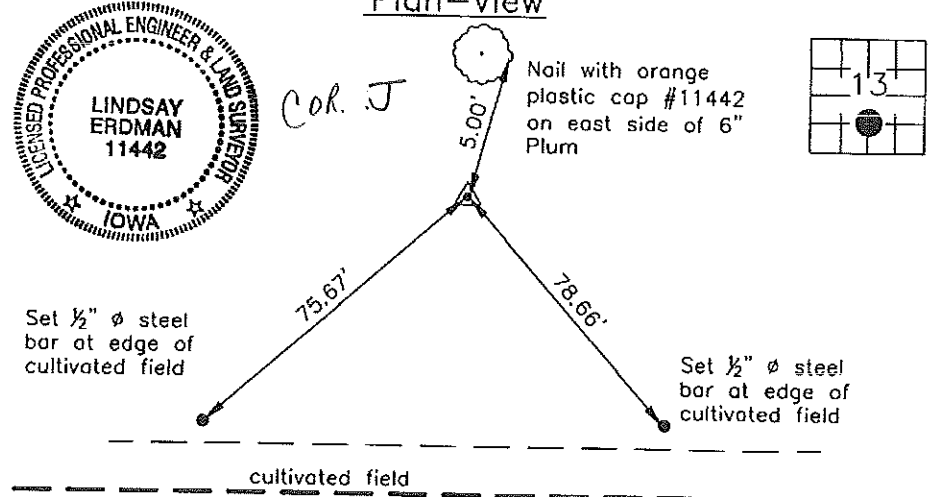
Prepared by: Erdman Engineering, P.C., 708 Commerce Drive, P.O. Box 246, Decorah, Iowa 52101 (563) 382-4194

United States Public Land Survey Corner Certificate

of
Land Survey Monuments situated in Section 13, Township 96, Range 14 West of
the 5th Principal Meridian in Chickasaw County, Iowa. Previously recorded in
does not apply in the county Recorder's Office.

Monument Description and Remarks: This certificate is prepared in accordance with Section 193C of the Code of Iowa. No previous certificate has been filed for this corner location. We found no record of the S 1/8 Corner being set. We found no evidence of a monument in the field. We found the N 1/4 Corner, S 1/4 Corner, W 1/4 Corner, WSW 1/8 Corner, and E 1/4 Corner. We computed the location of the Center Section. We found a steel bar with yellow plastic cap #7549 at the Northeast Corner of a parcel previously surveyed. Based on this we set a 3/4" diameter steel bar with 2" aluminum cap #11442 at the intersection of the lines from the N 1/4 to the S 1/4 corner and the North line of the previously surveyed parcel as the S 1/8 Corner of Section 13, Township 96 North, Range 14 West.

Plan-View



I hereby certify that the survey work was completed and this certificate was prepared by me or under my direct supervision and that I am a duly registered land surveyor under the laws of the State of Iowa.

Signature: [Signature]
Lindsay Erdman, P.E. and P.L.S. Iowa License Number 11442

Date: 1/12/04
My license renewal date is December 31, 2004

Corner(s) to be Indexed

Corner	Section	Township	Range
S 1/8	13	96	14