

UNITED STATES PUBLIC LAND SURVEY CORNER CERTIFICATE

OF 12

Land Survey Monuments situated in Section 18, Township 96N, Range 13W, of the Fifth Principal Meridian, Chickasaw County, Iowa.
 Previously recorded in Dogs Not 9774 in County Recorder's Office.
(book, page, document number, etc.)

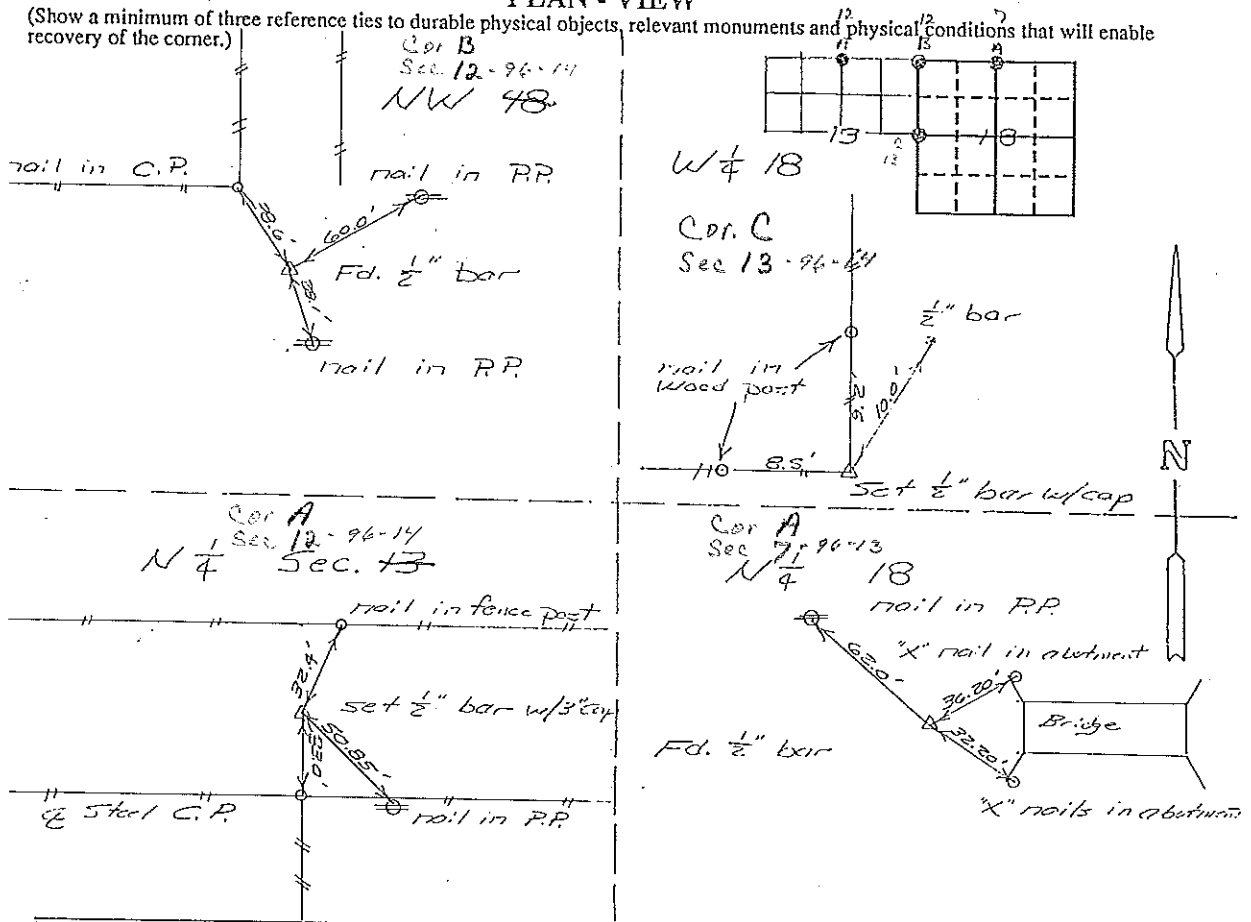
(Show reason for preparing this certificate, the evidence and detailed procedures used in establishing the corner positions and monumentation found or placed.)

Monument Description and Remarks: 9/30 1/4 Cor Sec. 13-T96N-R14W

Section 12-96-14
 As referred to in
 Engr. Tie Book.

PLAN - VIEW

(Show a minimum of three reference ties to durable physical objects, relevant monuments and physical conditions that will enable recovery of the corner.)



I hereby certify that the survey work was completed and this certificate was prepared by me or under my direct personal supervision and that I am a duly registered land surveyor under the laws of the state of Iowa.

Signature: L. P. Erdman

Name typed or printed: L. P. Erdman

Date: 7-14-92 Reg. No. 2886

Corners	List Corners to be Indexed Section	Twp	Range
<u>N 1/4</u>	<u>18</u>	<u>96N</u>	<u>13W</u>
<u>NW 1/4</u>	<u>18</u>	<u>96N</u>	<u>13W</u>
<u>W 1/4</u>	<u>18</u>	<u>96N</u>	<u>13W</u>
<u>N 1/4</u>	<u>13</u>	<u>96N</u>	<u>14W</u>

SEAL

