

Section 11-96-14  
As referred to in  
Engr. Title Book

2002 JUL 3 AM 9 12

CINDY MESSERSMITH  
COUNTY RECORDER

TeKIPPE ENGINEERING, P.C., 128 South Vine Street, West Union, Iowa 52175 Phone (563) 422-6131

UNITED STATES PUBLIC LAND SURVEY CORNER CERTIFICATE

OF

Land Survey Monuments situated in Section 12, Township 96 North, Range 14 West of the Fifth Principal Meridian, CHICKASAW County, Iowa.

Previously recorded in (1) none (2) Book 150 Page 219 in County Recorder's Office.  
(book, page, document number, etc.)

(Show reason for preparing this certificate, the evidence and detailed procedures used in establishing the corner positions and monumentation found or placed.)

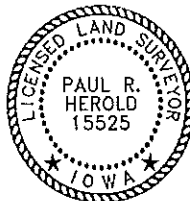
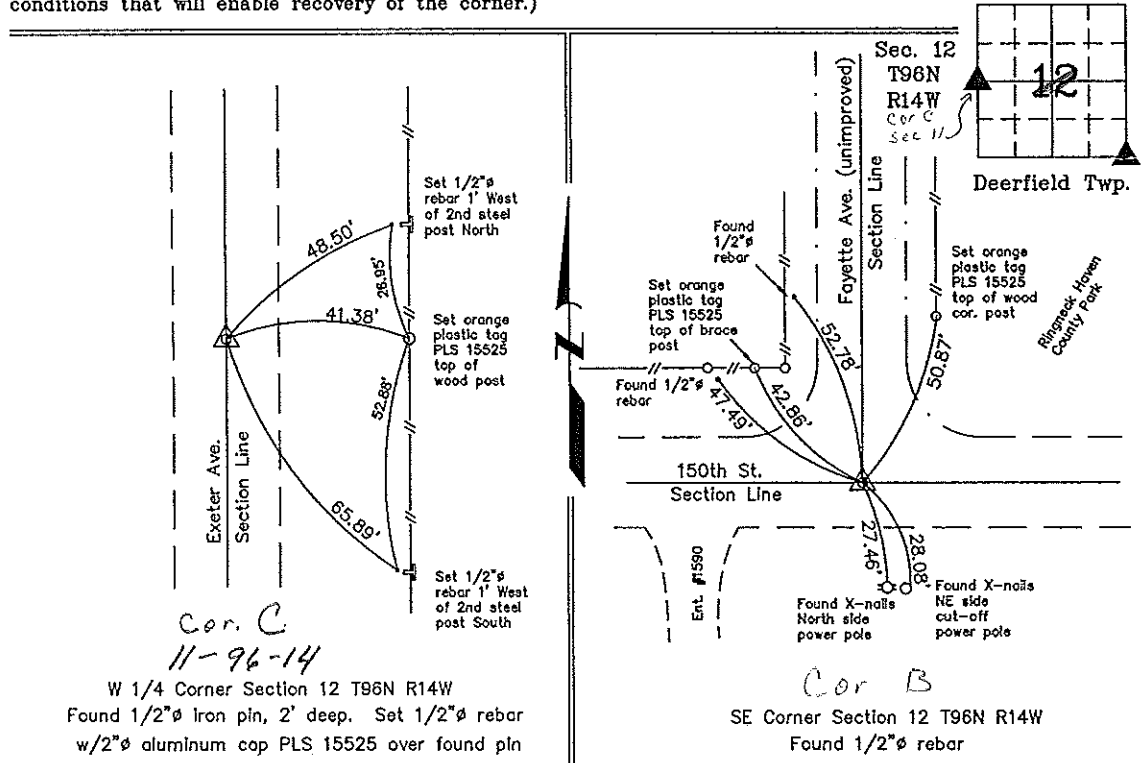
Monument Description and Remarks: (1) W 1/4 Corner Section 12 T96N R14W: Found 1/2"Ø iron pin, 2' deep, with information obtained from the Chickasaw County Engineer's Office in Field Book Deerfield South, Section 11, Corner 'C'. Set 1/2"Ø rebar w/2"Ø aluminum cap PLS 15525 over found iron pin.

(2) SE Corner Section 12 T96N R14W: Found 1/2"Ø rebar with information obtained from the previous Section Corner Certificate filed in the Chickasaw County Recorder's August 28, 1992 in Book 150 Page 219. All reference ties noted on the previous Certificate were missing. Other reference ties were found and two ties were added.

PLAN - VIEW

129814ky.dwg Project Number 02094.IS  
FB. 46J PG. 10-13

(Show a minimum of three reference ties to durable physical objects, relevant monuments and physical conditions that will enable recovery of the corner.)



I hereby certify that this land surveying document was prepared and the related survey work was performed by me or under my direct personal supervision and that I am a duly licensed Land Surveyor under the laws of the State of Iowa.

Paul R. Herold 7-2-02  
Paul R. Herold Date  
License number 15525  
My license renewal date is December 31, 2002.  
Sheets covered by this seal: Individual

List Corners to be Indexed			
Corners	Section	Twp.	Range
W 1/4	12	96N	14W
SE	12	96N	14W

Filed 7-9-02

County Engineer's  
11-96-14

UNITED STATES PUBLIC LAND SURVEY CORNER CERTIFICATE

OF 12

Land Survey Monuments situated in Section 18, Township 96N, Range 13W, of the Fifth Principal Meridian, Chickasaw County, Iowa.  
 Previously recorded in Dogs Not 9774 in County Recorder's Office.  
(book, page, document number, etc.)

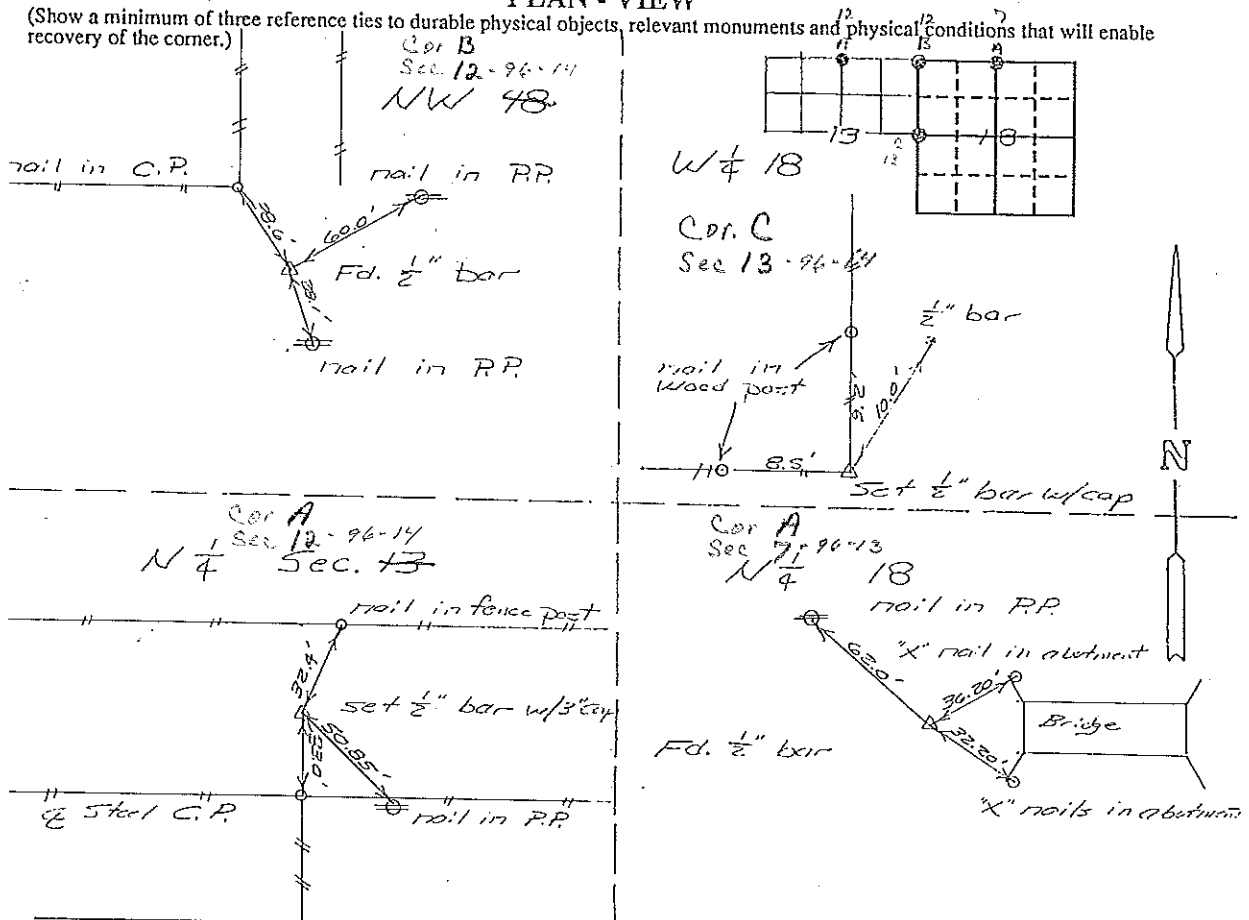
(Show reason for preparing this certificate, the evidence and detailed procedures used in establishing the corner positions and monumentation found or placed.)

Monument Description and Remarks: 9/30 1/4 Cor Sec. 13-T96N-R14W

Section 12-96-14  
 As referred to in  
 Engr. Tie Book.

PLAN - VIEW

(Show a minimum of three reference ties to durable physical objects, relevant monuments and physical conditions that will enable recovery of the corner.)



I hereby certify that the survey work was completed and this certificate was prepared by me or under my direct personal supervision and that I am a duly registered land surveyor under the laws of the state of Iowa.

Signature: L. P. Erdman

Name typed or printed: L. P. Erdman

Date: 7-14-92 Reg. No. 2886

Corners	List Corners to be Indexed Section	Twp	Range
N 1/4	18	96N	13W
NW 1/4	18	96N	13W
W 1/4	18	96N	13W
N 1/4	13	96N	14W

SEAL

