

Section 14-96-14
 As referred to in
 Engr. Tie Book

FILED 2003 - 3815

RECORDER'S OFFICE
 CHICKASAW COUNTY, IOWA

Dec 9/100
 2003 DEC 31 AM 9 17

CINDY MESSERSMITH
 COUNTY RECORDER

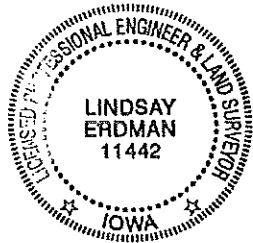
Prepared by: Erdman Engineering, P.C., 708 Commerce Drive, P.O. Box 246, Decorah, Iowa 52101 (563) 382-4194

United States Public Land Survey Corner Certificate
 of

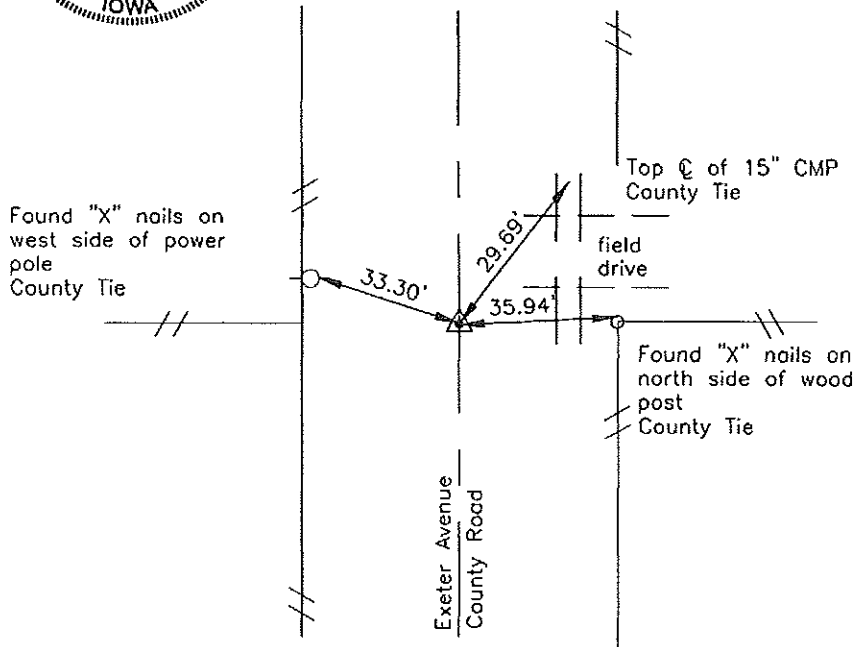
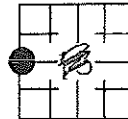
Land Survey Monuments situated in Section 13, Township 96, Range 14 West of
 the 5th Principal Meridian in Chickasaw County, Iowa. Previously recorded in
does not apply in the county Recorder's Office.

Monument Description and Remarks: This certificate is prepared in accordance with
 Section 193C of the Code of Iowa. No previous certificate has been filed for this
 corner location. Based on Chickasaw County Engineer's Reference ties we found the tie
 markers used previously for corner "C" of Section 14 of the South part of Deerfield
 Township. From these ties we found a 3/4" diameter steel bar at the approximate
 centerline of the county road and in line with the fence lines running east and west.
 County Engineer's records show only that an I.P. was set by H.R. Green Company.
 Based on this we used the steel bar as the W 1/4 Corner of Section 13, Township 96
 North, Range 14 West.

Plan-View



Cor. C 14-96-14



I hereby certify that the survey work was completed
 and this certificate was prepared by me or under my
 direct supervision and that I am a duly registered
 land surveyor under the laws of the State of Iowa.

Signature Lindsay Erdman
 Lindsay Erdman, P.E. and P.L.S. Iowa License Number 11442

Date: 12/23/03

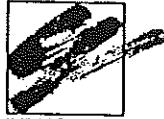
My license renewal date is December 31, 2004

Corner(s) to be Indexed

| Corner | Section | Township | Range |
|--------|---------|----------|-------|
| W 1/4 | 13 | 96 | 14 |

Project _____

Sheet No. _____ of _____



Job No. _____

Calc's for _____

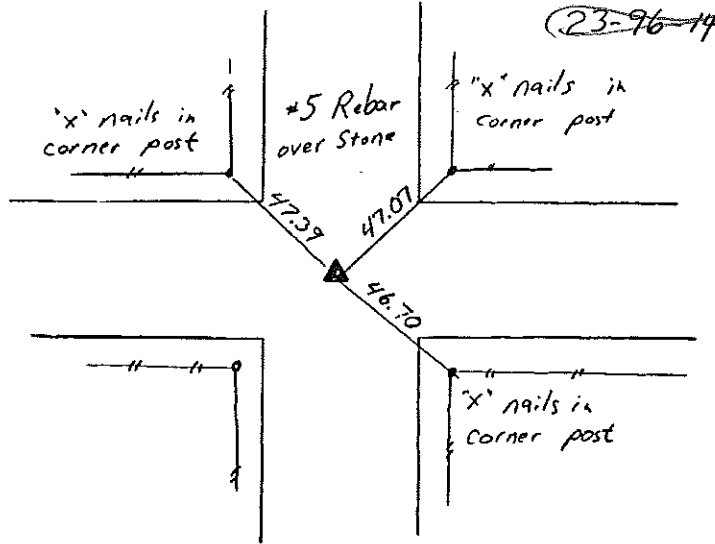
CONSULTING ENGINEERS

By _____ Date _____

4250 Glass Rd. N.E., P.O. Box 9009
Cedar Rapids, Iowa 52409
Phone 319/395-7805

Checked _____ Date _____

NE COR

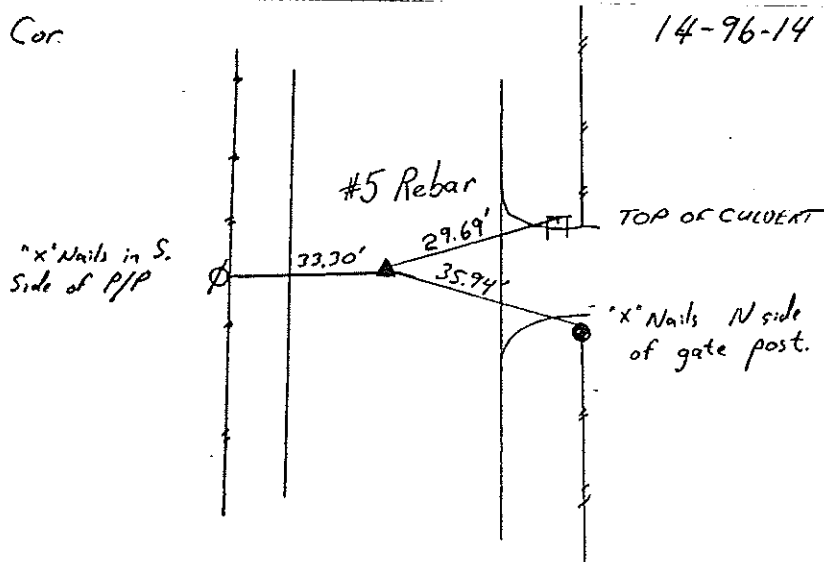


CORNER "B" OF

14-96-14

12/89
Entered
New ties
in Tie Book

E 1/4 Cor



CORNER "C" OF

14-96-14