

XX
 I DOCUMENT No. 00554 FILED FOR RECORD THE 10th DAY OF September 1998 AT 8:30 O'CLOCK A. M. BOOK 168 Deeds PAGE 477 STATE OF IOWA, CHICKASAW COUNTY: Deitha D. Rose Recorder
 C RECORDING FEE \$ 6.00 By Deborah K. Holliman LEITHAN DUSE Deputy
 M S TRANSFER FEE \$ ---

Prepared by: Erdman Engineering P.C. 708 Commerce Drive, P.O. Box 246, Decorah Iowa, 52101
 Phone (319)382-4194, Fax (319)382-3623

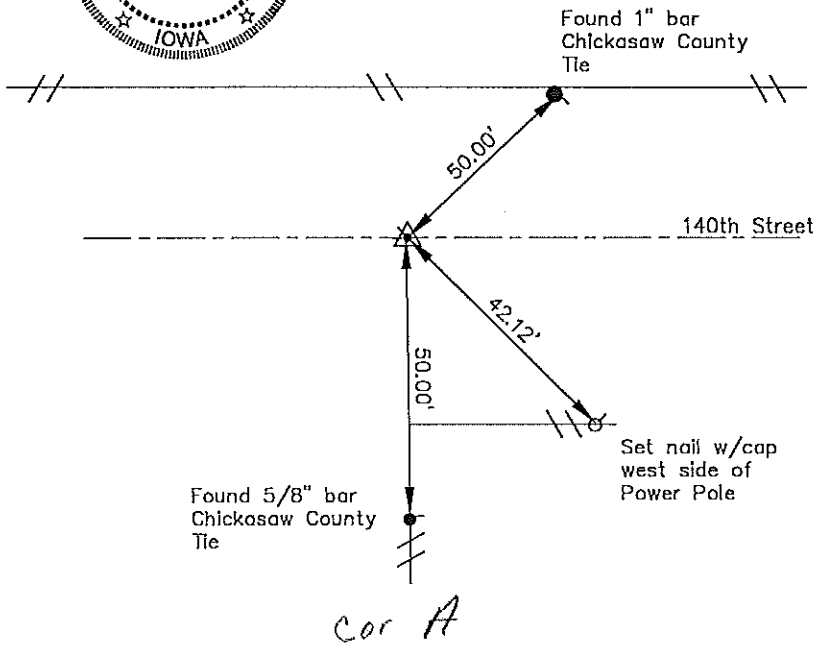
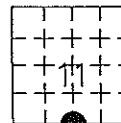
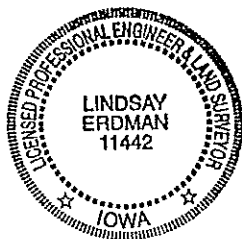
United States Public Land Survey Corner Certificate of

Land Survey Monuments situated in Section 11 Township 96 Range 14 of the Fifth Principle Meridian,
Chickasaw County, Iowa. Previously recorded in does not apply in County Recorders Office.

(Show reason for preparing this certificate, the evidence and detailed procedures used in establishing the
 corner positions and monumentation found or placed.)

Monument Description and Remarks: This certificate is prepared in accordance with Section 355.11
 of the 1995 Code of Iowa. No previous certificate has been filed for this corner location. Based on
 Chickasaw County Engineer's Reference Ties we found two iron pins used as tie markers. Based on
 these ties we searched for iron pin previously set. We did not find the pin. We set a 1/2" bar
 w/cap Iowa RLS #11442 from these ties, at the S 1/4 Corner of Section 11, Township 96 North,
 Range 14 West.

Plan-View
 (Show a minimum of three reference ties to durable physical objects, relevant
 monuments and physical conditions that will enable recovery of the corner.)



I hereby certify that the survey work was completed
 and this certificate was prepared by me or under my
 direct supervision and that I am a duly registered
 land surveyor under the laws of the State of Iowa.

Signature Lindsay Erdman
 Lindsay Erdman, P.E. and L.S.

Date: 9/9/98 Reg. No. 11442

My license renewal date is December 31, 1998

List Corners to be Indexed			
Corners	Section	Twp.	Range
S 1/4	11	96	14