

DOCUMENT No. **00054** FILED FOR RECORD THE **5th** DAY OF **JULY** 19 **96** AT **8:35** P.M. STATE OF IOWA, CHICKASAW COUNTY.  
 RECORDING FEE \$ **6.00** O'CLOCK **A.** M. BOOK **161** Deed PAGE **237** By *Lindsay Erdman* Recorder  
 TRANSFER FEE \$ **---** LEITHA N. ROSS Deputy

Section 11-96-14  
As referred to in  
Engl. Tie Book

Prepared by: Erdman Engineering P.C. 708 Commerce Drive, P.O. Box 246, Decorah Iowa, 52101  
Phone (319)382-4194, Fax (319)382-3623

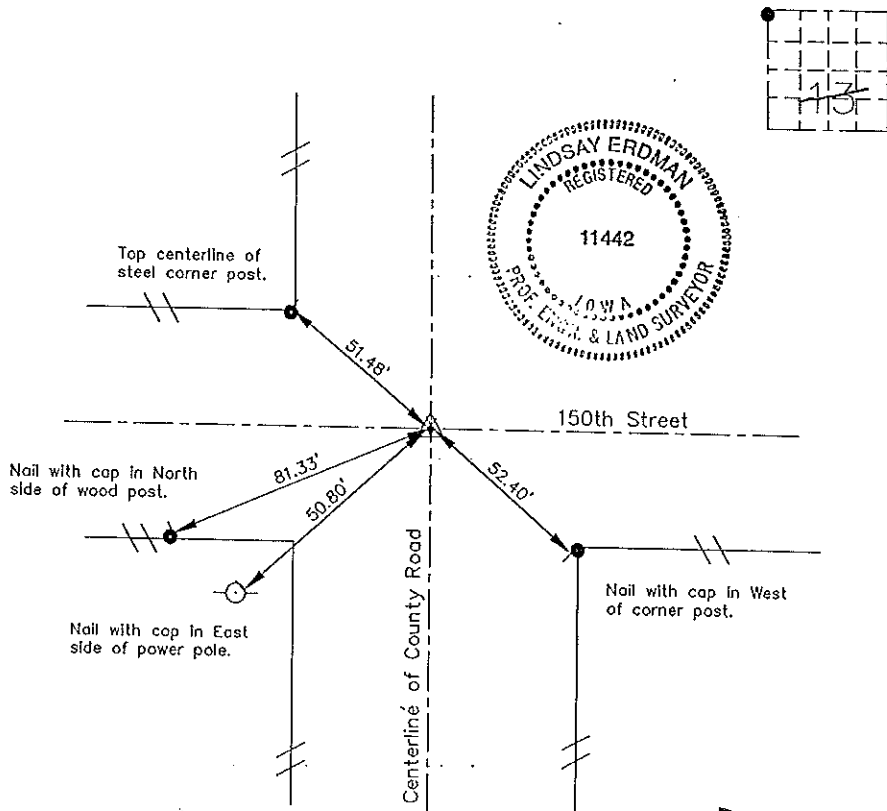
### United States Public Land Survey Corner Certificate

Land Survey Monuments situated in Section 13 of Township, 96 Range, 14 of the Fifth Principle Meridian, Chickasaw County, Iowa. Previously recorded in does not apply in County Recorders Office.

(Show reason for preparing this certificate, the evidence and detailed procedures used in establishing the corner positions and monumentation found or placed.)

Monument Description and Remarks: This certificate is prepared in accordance with Section 355.11 of the 1995 Code of Iowa. No previous certificate has been filed for this corner location. Based on County Engineer's Reference Ties we found a 1" pipe down +6" below the surface of crushed rock road surfacing. We set a 1/2" bar with cap RLS #11442 inside the found pipe at the NW corner of Sec. 13-96-14.

Plan-View  
(Show a minimum of three reference ties to durable physical objects, relevant monuments and physical conditions that will enable recovery of the corner.)



Cor. B  
11-96-14

I hereby certify that the survey work was completed and this certificate was prepared by me or under by direct supervision and that I am a duly registered land surveyor under the laws of the State of Iowa.

Signature *Lindsay Erdman*  
Lindsay Erdman, P.E. and L.S.  
Date: 6/26/96 Reg. No. 11442  
My license will be renewed January 1, 1997

Corners	List Section	Corners to be Indexed	Twp.	Range
NW	13	96	14	