

UNITED STATES PUBLIC LAND SURVEY CORNER CERTIFICATE

OF

LAND SURVEY MONUMENTS SITUATED IN SECTION 16, TOWNSHIP 96N, RANGE 14W, OF THE 5th PRINCIPAL MERIDIAN
 CHICKASAW COUNTY, IOWA PREVIOUSLY RECORDED IN _____ N/A _____ IN COUNTY RECORDER'S OFFICE.

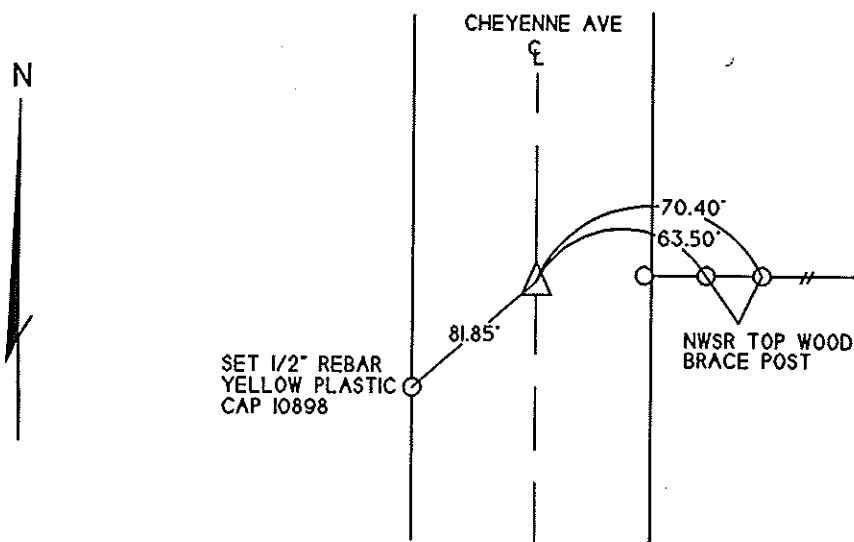
MONUMENT DESCRIPTION AND REMARKS: _____

E 1/4 COR - FOUND 1/2" PIN ON CENTERLINE OF CHEYENNE AVE 14" DEEP PER COUNTY ENGINEER'S RECORD

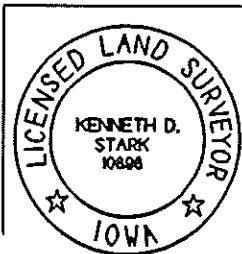
REASON FOR CERT: NO CERT OF RECORD

PLAN VIEW

E 1/4 COR



Cor C



I HEREBY CERTIFY THAT THIS LAND SURVEYING DOCUMENT WAS PREPARED AND THE RELATED SURVEY WAS PERFORMED BY ME OR UNDER MY PERSONAL SUPERVISION AND THAT I AM A DULY LICENSED SURVEYOR.

Kenneth D. Stark 02-05-09
 KENNETH D. STARK DATE

LICENSE NUMBER 10898
 MY LICENSE RENEWAL DATE IS DECEMBER 31, 2009
 PAGES OR SHEETS COVERED BY THIS SEAL 1

LIST OF CORNERS TO BE INDEXED			
CORNERS	SECTION	TWP	RANGE
E 1/4 COR	16	96N	14W

