

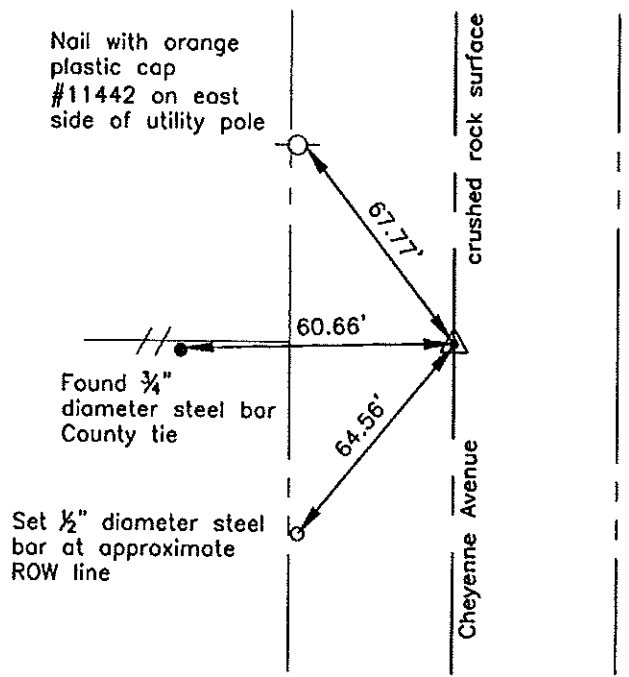
Prepared by: Erdman Engineering, P.C., 708 Commerce Drive, P.O. Box 246, Decorah, Iowa 52101 (563) 382-4194

**United States Public Land Survey Corner Certificate**  
 of

Land Survey Monuments situated in Section 9, Township 96, Range 14 West of the 5th Principal Meridian in Chickasaw County, Iowa. Previously recorded in does not apply in the county Recorder's Office.

Monument Description and Remarks: This certificate is prepared in accordance with Section 355.11 of the Code of Iowa. No previous certificate has been filed for this corner location. Based on Chickasaw County Engineer's Reference Ties we found a steel bar that had been used previously as a tie marker. From this remaining tie we found a 3/4" diameter steel bar at the approximate centerline of the county road and in line with the fence line running west. County Engineer's Records do not show what type of monument was set only that it was found, raised and tied in 1958 and 1962. We used the steel bar as the SE Corner of Section 9, Township 96 North, Range 14 West.

Plan-View



cor. B  
 9-96-14

I hereby certify that this land surveying document was prepared and the related survey work was performed by me or under my direct personal supervision and that I am a duly licensed Land Surveyor under the laws of the State of Iowa.

Signature: [Signature]  
 Lindsay Erdman, P.E. and P.L.S. Iowa License Number 11442

Date: 6/14/12

My license renewal date is December 31, 2012

Corner(s) to be Indexed

Corner	Section	Township	Range
SE	9	96	14