

Prepared by & Return to Harold - Reicks Surveying, 13 East Main Street, New Hampton, IA 50655, Ph. 641-964-2725

CORRECTIVE UNITED STATES PUBLIC LAND SURVEY CORNER CERTIFICATE

17

Land Survey Monuments situated in Section 16, Township 96 North, Range 14 West of the Fifth Principal Meridian, Chickasaw County, Iowa. Not previously recorded in the County Recorder's office.

This certificate is being prepared in compliance with Iowa Code Chapter 355.11 because:

- There is no certificate on file for this corner.
- There are no longer three valid ties of record.
- There are changes to reference ties of record.
- There is change of monumentation of record.
- To clarify description of record monument (ties).

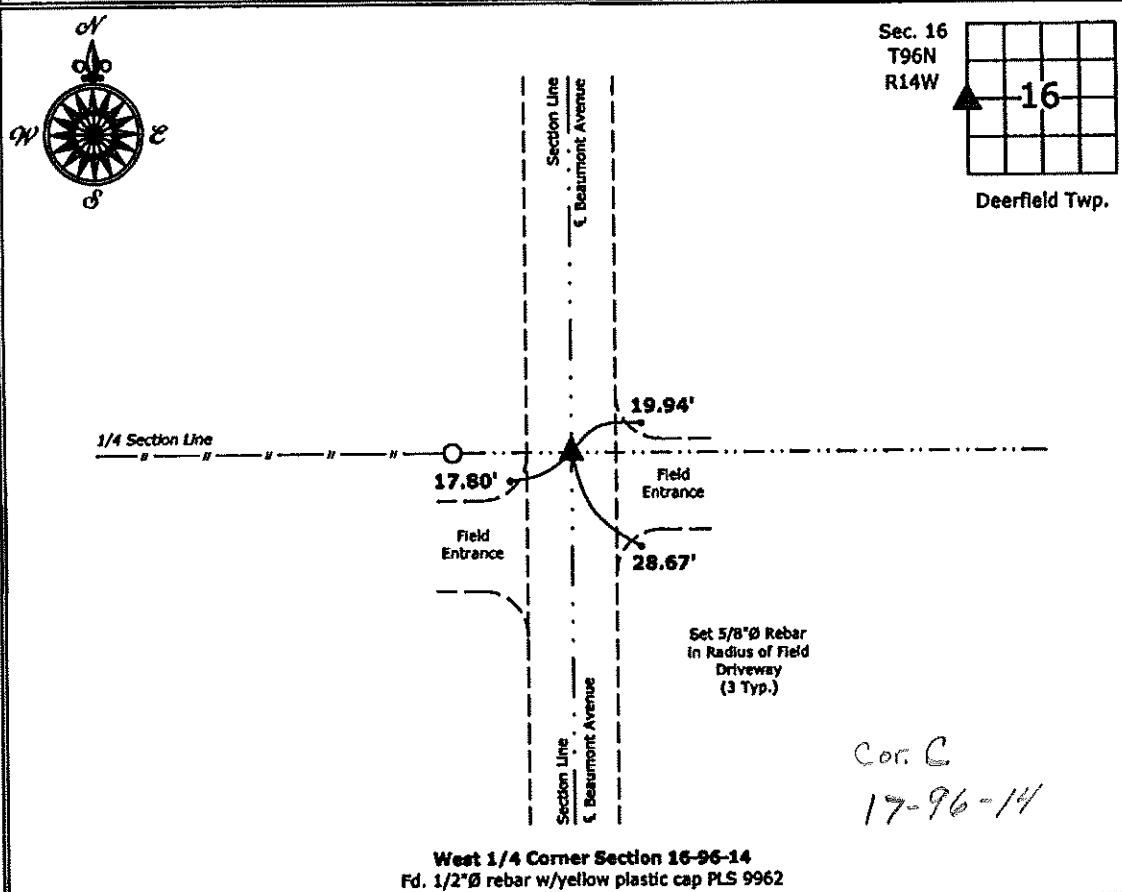
Monument Description and Remarks:

West 1/4 Corner: Found 1/2"Ø rebar w/yellow plastic cap PLS 9962 with information obtained on a Survey and Plat made by Harlan K. Schuck, recorded January 31, 2002 on file in the Chickasaw County Recorders Office.

This Corrective Section Corner Certificate is to supersede the one recorded February 14, 2013, Document Number 2013-0327, in order to correct the Township and Range.

PLAN - VIEW

(Show a minimum of three reference ties to durable physical objects, relevant monuments and physical conditions that will enable recovery of the corner.)



West 1/4 Corner Section 16-96-14
 Fd. 1/2"Ø rebar w/yellow plastic cap PLS 9962



I hereby certify that this land surveying document was prepared and the related survey work was performed by me or under my direct personal supervision and that I am a duly licensed Land Surveyor under the laws of the State of Iowa.

Kirk D. Reicks 2-26-13
 Kirk D. Reicks Date:

License number 19211
 My license renewal date is December 31, 2014.
 Sheets covered by this seal: Individual sheet only

List Corners to be Indexed			
Corners	Section	Twp.	Range
W 1/4	16	96	14

FB: Chickasaw 5, Pgs. 24-25
 Survey was completed on January 14, 2013.