



Prepared by & Return to: Herold - Reicks Surveying, 10 East Main Street, New Hampton, IA 50659, Ph. 641-994-2725

United States Public Land Survey Corner Certificate

Land Survey Monument situated in
 Section 8, Township 96 North, Range 14 West of the Fifth Principal Meridian, % County, Iowa.
 On file in Document #2009-1099 in the County Recorder's office.

This certificate is being prepared in compliance with Iowa Code Chapter 355.11 because:

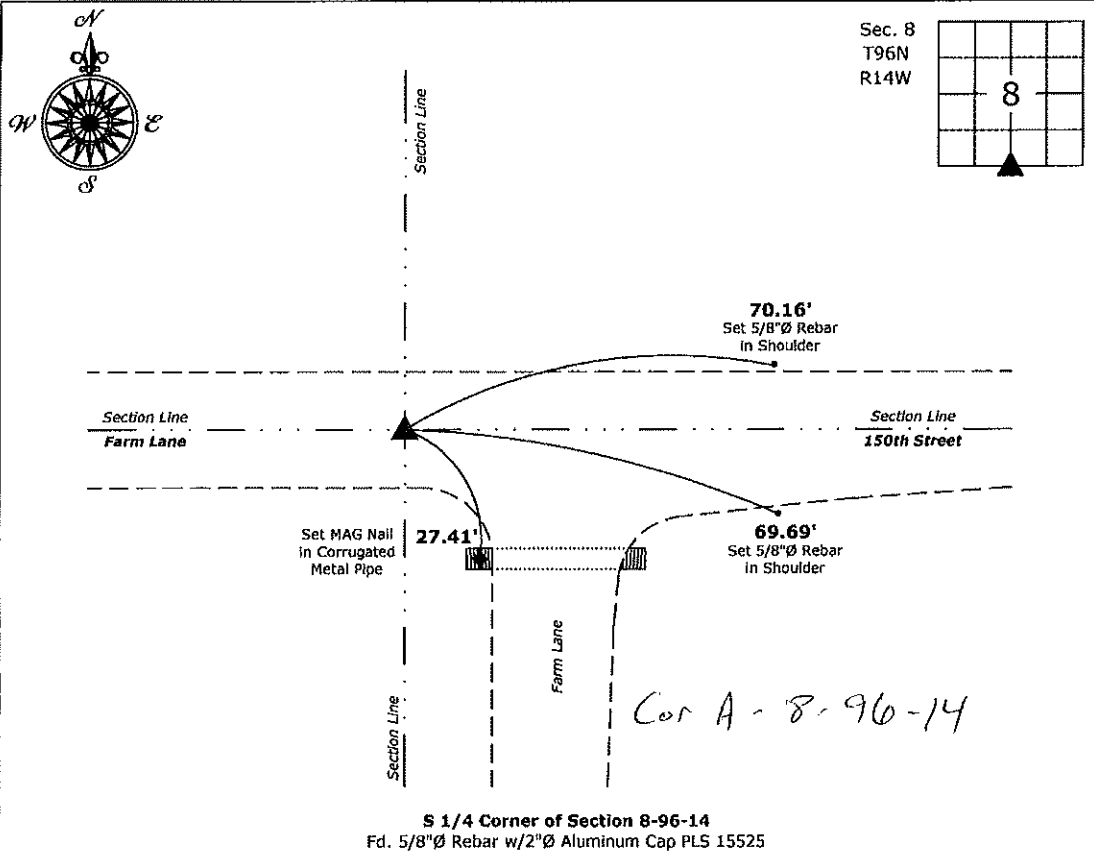
- There is no certificate on file for this corner.
- There are no longer three valid ties of record.
- There are changes to reference ties of record.
- There is change of monumentation of record.
- To clarify description of record monument (ties).

Monument Description and Remarks:

South 1/4 Corner: Found 5/8"Ø Rebar w/2"Ø aluminum cap PLS 15525 with information obtained from the previously recorded Section Corner Certificate.

Plan View

(Show a minimum of three reference ties to durable physical objects, relevant monuments and physical conditions that will enable recovery of the corner.)



S 1/4 Corner of Section 8-96-14
 Fd. 5/8"Ø Rebar w/2"Ø Aluminum Cap PLS 15525



I hereby certify that this land surveying document was prepared and the related survey work was performed by me or under my direct personal supervision and that I am a duly licensed Land Surveyor under the laws of the State of Iowa.

Paul R. Herold 6-8-20
 Paul R. Herold Date:
 License number 15525
 My license renewal date is December 31, 2020.
 Sheets covered by this seal: Individual sheet only

List Corner to be Indexed			
Corner	Section	Twp.	Range
S 1/4	8	96	14

Project Number: 2020-052
 FB: Chickasaw 10, Pg. 47

Herold - Reicks Surveying, 25 1/2 East Main Street, Suite 204, New Hampton, IA 50659, Ph. 641-394-2725

UNITED STATES PUBLIC LAND SURVEY CORNER CERTIFICATE

Land Survey Monuments situated in Section 8, Township 96 North, Range 14 West of the Fifth Principal Meridian, Chickasaw County, Iowa. Previously not recorded in the County Recorder's office.

This certificate is being prepared in compliance with Iowa Code Chapter 355.11 because:

- 1.) & 2.) There is no certificate on file for this corner.
 There are no longer three valid ties of record.
 There are changes to reference ties of record.
 1.) There is change of monumentation of record.
 1.) To clarify description of record monument (ties).

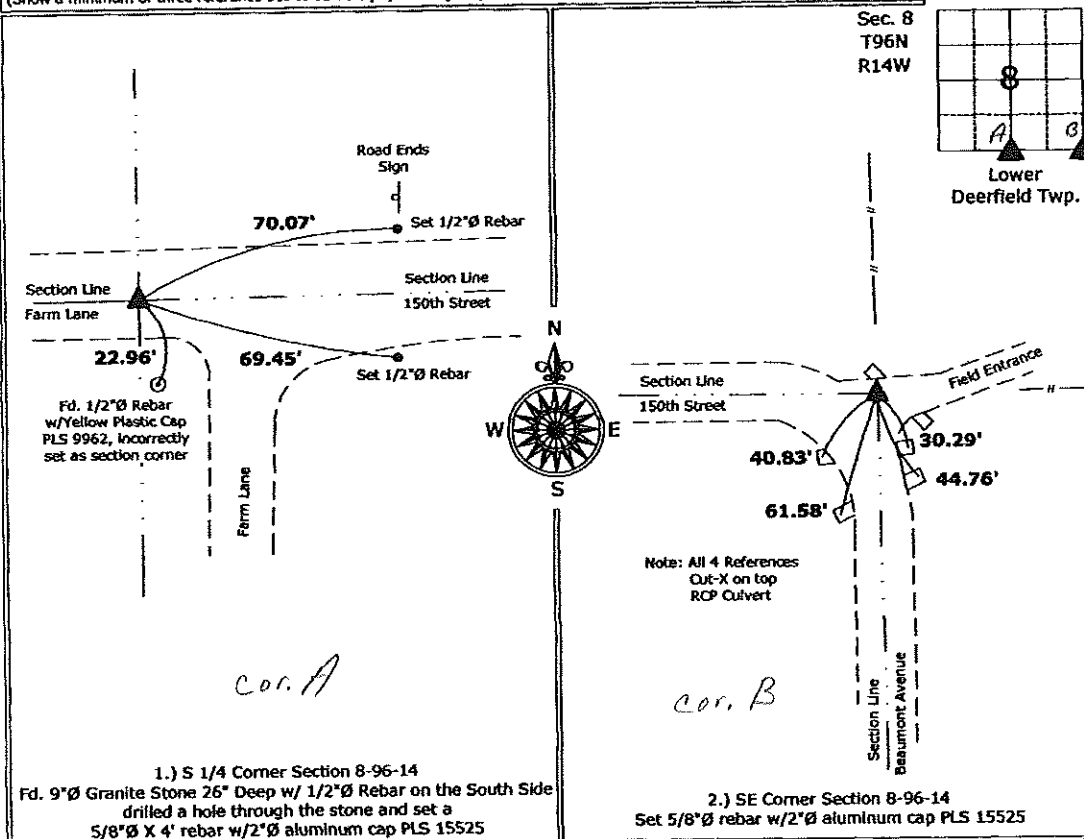
Monument Description and Remarks:

1.) S 1/4 Corner Section 8-96-14: Fd. 9"Ø Granite Stone 26" Deep w/ 1/2"Ø Rebar on the South Side - drilled a hole through the stone and set a 5/8"Ø X 4' rebar w/2"Ø aluminum cap PLS 15525, stone was located from information obtained from the Chickasaw County Engineer's Office, in Field Book Lower Deerfield Twp. Corner Ties, Section 8, Corner "A", the monument set by Harlan K. Schuck, on a survey and plat recorded January 31, 2002, Document #2002-033, was erroneously set 22.96' South of the historical (True) monument and there is no prior section corner certificate filed for this corner.

2.) SE Corner Section 8-96-14: Set 5/8"Ø rebar w/2"Ø aluminum cap PLS 15525 by double the distance from the S 1/4 Corner to and across the SE Corner SW 1/4-SE 1/4, as indicated from information obtained from the Chickasaw County Engineer's Office, in Field Book Lower Deerfield Twp. Corner Ties, Section 8, Corner "B", the original monument appears to have been removed when a culvert was installed.

PLAN - VIEW

(Show a minimum of three reference ties to durable physical objects, relevant monuments and physical conditions that will enable recovery of the corner.)



I hereby certify that this land surveying document was prepared and the related survey work was performed by me or under my direct personal supervision and that I am a duly licensed Land Surveyor under the laws of the State of Iowa.

Paul R. Herold 5-22-09
 Paul R. Herold Date:

License number 15525
 My license renewal date is December 31, 2010.
 Sheets covered by this seal: Individual sheet only

List Corners to be Indexed			
Corners	Section	Twp.	Range
S 1/4	8	96	14
SE	8	96	14

Project Number: 2009-052
 FB: Chickasaw County 2, Pgs. 12-14