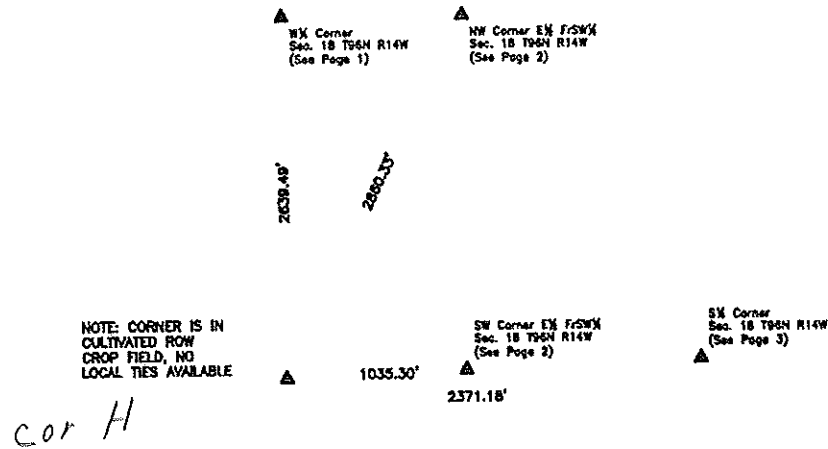


SW Corner



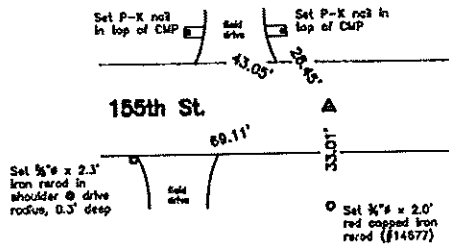
Monument Description, Remarks, and Plan View:

SW Corner - History of Corner =
 1996, Mar. 14 - "REBAR /CAP # 10793" per Floyd County Recorder's Book I.S. 8 Pages 124B, 125B and 126.
 1996, Mar. 14 - "REBAR /CAP # 10793" per Chickasaw County Recorder's Book 160 Deeds Page's 200 and 202.
 Previous and current County Engineer's ties do not indicate that corner is monumented.

Corner Recovery =
 Calculated a position using a bearing - bearing intersection using record bearings from the W 1/2 Corner and the S 1/2 Corner. Searched a 15' area around said position with a metal detector and found nothing. Since no monumentation could be located and there is no local evidence, set a 3/4" x 4.0' aluminum capped iron rerod (#14677), 1.2' deep at calculated position and used it at the correct corner. All ties are plumb distance.

This certificate is being prepared because there are no certificates on file for this corner.

NW Corner E 1/2 FrSW 1/4



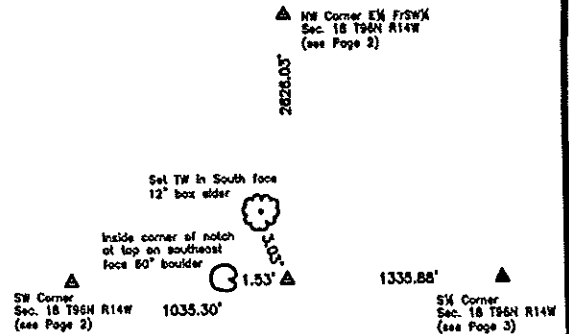
Monument Description, Remarks, and Plan View:

NW Corner E 1/2 FrSW 1/4 - History of Corner =
 Previous and current County Engineer's ties do not indicate that corner is monumented.

Corner Recovery =
 Searched area with a metal detector and found no magnetic readings. Since there is no available County record of this corner being monumented, set a 3/4" x 4.0' aluminum capped iron rerod (#14677) stamped "1/4-1/4 COR" at a point online and at prorated distances between the Center and the W 1/2 Corner and used it as the correct corner. Rerod is 0.4' deep in apparent centerline of traveled surface of gravel road East-West and 8'± East of fence line remnants North. All ties are plumb distance.

This certificate is being prepared because there are no certificates on file for this corner.

SW Corner E 1/2 FrSW 1/4



Monument Description, Remarks, and Plan View:

SW Corner E 1/2 FrSW 1/4 - History of Corner =
 Previous and current County Engineer's ties do not indicate that corner is monumented.

Corner Recovery =
 Searched area with a metal detector and found no magnetic readings. Since there is no available County record of this corner being monumented and area has been disturbed by heavy equipment, set a 3/4" x 4.0' aluminum capped iron rerod (#14677) stamped "1/4-1/4 COR" at a point online and at prorated distances between the S 1/2 Corner and the SW Corner and used it as the correct corner. Rerod is 0.3' exposed inline with wandering fence line to North. All ties are plumb distance.

This certificate is being prepared because there are no certificates on file for this corner.

Legend

BC = Nail with Bottle Cap
 BP = Brace Post
 CP = Corner Post
 CMP = Corrugated Metal Pipe
 CM = 4" Sq Concrete Monument with 1/2" iron rerod in center (tie to rerod)
 CX = Cut 'X'
 GP = Gate Post

ID = Inside Diameter
 OD = Outside Diameter
 PP = Power Pole
 PW = Nail with Plastic Washer
 RCP = Reinforced Concrete Pipe
 RH = Red Head (Nail in wire)
 ROW = Right of Way
 RW = Nail with Reflective Round Washer

R/W = Iron ROW Rail
 SFP = Steel 'T' Post
 SW = Nail with Square Weld Washer
 TP = Telephone Pedestal
 TW = Nail with Round Metal Washer
 WFP = Wood Fence Post
 X = X Nails

