

UNITED STATES PUBLIC LAND SURVEY CORNER CERTIFICATE

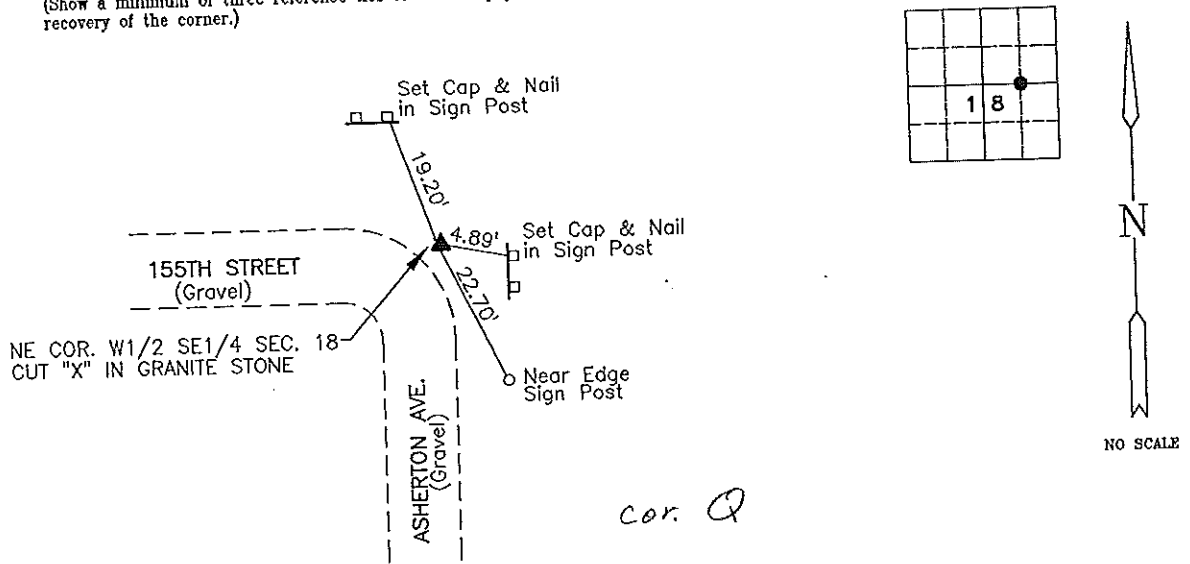
Land Survey Monuments Situated in Section 18, Township 96 N, Range 14 W, of the Fifth Principle Meridian, CHICKASAW County, Iowa
Previously Recorded in _____ in County Recorder's Office
(book, page, document number, etc.)

(Show reason for preparing this certificate, the evidence and detailed procedures used in establishing the corner positions and monumentation found or placed.)

Monument Description and Remarks: NE COR. W1/2 SE1/4 - CUT "X" IN GRANITE STONE

PLAN-VIEW

(Show a minimum of three reference ties to durable physical objects, relevant monuments and physical conditions that will enable recovery of the corner.)



Cor. Q

I hereby certify that this land surveying document was prepared and the related survey work was performed by me or under my direct personal supervision and that I am a duly licensed Land Surveyor under the laws of the State of Iowa.

Brian J. Diehl
Brian J. Diehl

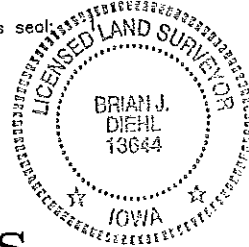
October 29, 1997
Date

License number 13644

My license renewal date is December 31, 1997.

Sheets covered by this seal:

SEAL



PREPARED BY:

WHKS & CO.

ENGINEERS PLANNERS ARCHITECTS LAND SURVEYORS

1412 8th STREET S.W.

P.O. BOX 1487
515-423-8271

MASON CITY, IOWA 50402-1487

165-352

Corners	Section	Twp	Range
NE CORNER W1/2 SE1/4	18	96	14

Cor Q 18-96-14

JFM

Placed in the book

10/31/97

JOB NO. S06497