

2016-1197

PREPARED BY: DARYL EIFFLER, 215 N ADAMS, MASON CITY, IOWA 50401, 641-424-6344

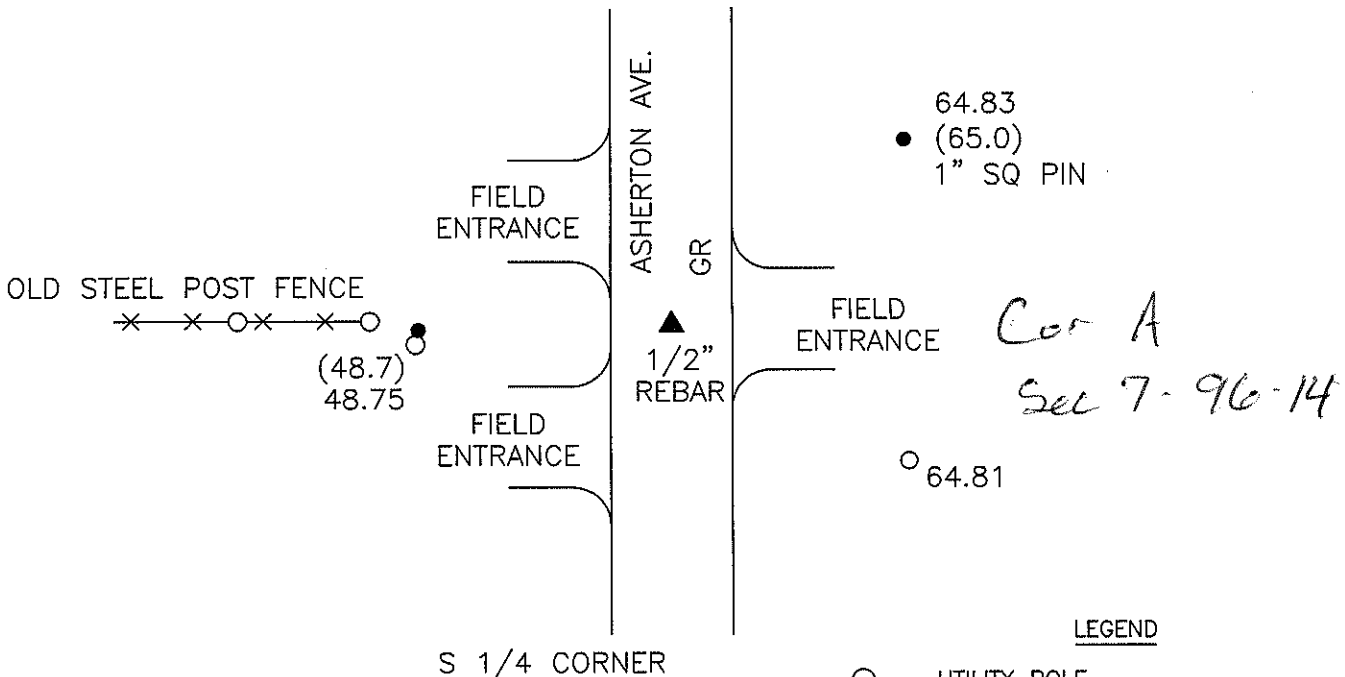
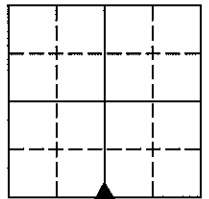
UNITED STATES PUBLIC LAND SURVEY CORNER CERTIFICATE OF

Land Survey Monuments situated in Section 7, Township 96 NORTH, Range 14 WEST, of the Fifth Principal Meridian, CHICKASAW County, Iowa
Previously recorded in DOES NOT APPLY in County Recorder's Office.
(book, page, document number, etc.)

Monument Description and Remarks: NO CERTIFICATE OF RECORD FOR THIS CORNER.
S 1/4 CORNER - FOUND 1/2" REBAR WITH YPC #9962 FLUSH IN CENTERLINE
GRAVEL IN LINE WITH FENCE RUNNING WEST USING COUNTY TIES.

SET ADDITIONAL TIE AS SHOWN.

PLAN - VIEW

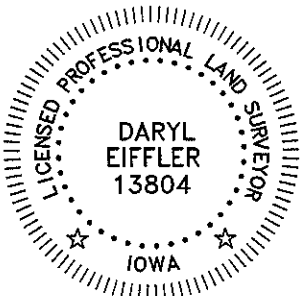


LEGEND

- - UTILITY POLE
- × - EXISTING FENCE, FENCE POST
- ▲ - FOUND LAND CORNER
- △ - SET LAND CORNER
- - FOUND "X" NAILS, UNLESS NOTED
- - SET 5/8" REBAR
- HMA - HOT MIX ASPHALT SURFACING
- PCC - PORTLAND CEMENT CONCRETE SURFACING
- SRP - SURVEY REFERENCE POINT
- GR - GRAVEL SURFACING
- YPC - YELLOW PLASTIC CAP
- (00.00) - RECORDED DISTANCE

PROJECT NO. 12273

FILE 961407



I HEREBY CERTIFY THAT THIS LAND SURVEYING DOCUMENT WAS PREPARED AND THE RELATED SURVEY WORK WAS PERFORMED BY ME OR UNDER MY DIRECT PERSONAL SUPERVISION AND THAT I AM A DULY LICENSED PROFESSIONAL LAND SURVEYOR UNDER THE LAWS OF THE STATE OF IOWA.

FOR SEH

Daryl Eiffler 9/6/16
DATE
DARYL EIFFLER
LICENSE NUMBER 13804

MY LICENSE RENEWAL DATE IS DECEMBER 31, 2016
SHEETS COVERED BY THIS SEAL: 1

List Corners to be Indexed			
Corners	Section	Twp	Range
S 1/4	7	96N	14W

215 NORTH ADAMS
MASON CITY, IOWA 50401
641-424-6344

