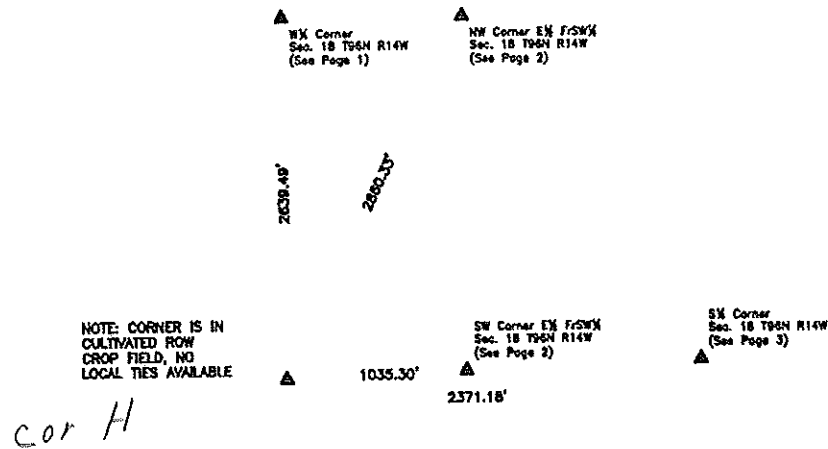


SW Corner



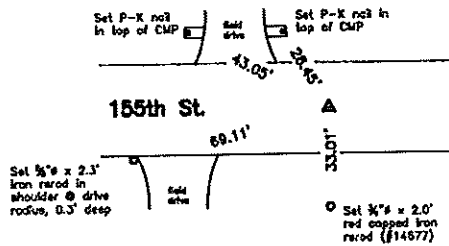
Monument Description, Remarks, and Plan View:

SW Corner - History of Corner =
 1996, Mar. 14 - "REBAR /CAP # 10793" per Floyd County Recorder's Book I.S. 8 Pages 124B, 125B and 126.
 1996, Mar. 14 - "REBAR /CAP # 10793" per Chickasaw County Recorder's Book 160 Deeds Page's 200 and 202.
 Previous and current County Engineer's ties do not indicate that corner is monumented.

Corner Recovery =
 Calculated a position using a bearing - bearing intersection using record bearings from the W 1/2 Corner and the S 1/2 Corner. Searched a 15' area around said position with a metal detector and found nothing. Since no monumentation could be located and there is no local evidence, set a 3/4" x 4.0' aluminum capped iron rod (#14677), 1.2' deep at calculated position and used it at the correct corner. All ties are plumb distance.

This certificate is being prepared because there are no certificates on file for this corner.

NW Corner E 1/2 FrSW 1/4



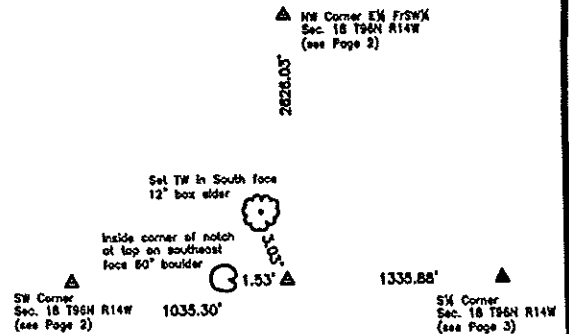
Monument Description, Remarks, and Plan View:

NW Corner E 1/2 FrSW 1/4 - History of Corner =
 Previous and current County Engineer's ties do not indicate that corner is monumented.

Corner Recovery =
 Searched area with a metal detector and found no magnetic readings. Since there is no available County record of this corner being monumented, set a 3/4" x 4.0' aluminum capped iron rod (#14677) stamped "1/4-1/4 COR" at a point online and at prorated distances between the Center and the W 1/2 Corner and used it as the correct corner. Rod is 0.4' deep in apparent centerline of traveled surface of gravel road East-West and 8'± East of fence line remnants North. All ties are plumb distance.

This certificate is being prepared because there are no certificates on file for this corner.

SW Corner E 1/2 FrSW 1/4



Monument Description, Remarks, and Plan View:

SW Corner E 1/2 FrSW 1/4 - History of Corner =
 Previous and current County Engineer's ties do not indicate that corner is monumented.

Corner Recovery =
 Searched area with a metal detector and found no magnetic readings. Since there is no available County record of this corner being monumented and area has been disturbed by heavy equipment, set a 3/4" x 4.0' aluminum capped iron rod (#14677) stamped "1/4-1/4 COR" at a point online and at prorated distances between the S 1/2 Corner and the SW Corner and used it as the correct corner. Rod is 0.3' exposed inline with wandering fence line to North. All ties are plumb distance.

This certificate is being prepared because there are no certificates on file for this corner.

Legend

BC = Nail with Bottle Cap
 BP = Brace Post
 CP = Corner Post
 CMP = Corrugated Metal Pipe
 CM = 4" Sq Concrete Monument with 1/2" iron rod in center (tie to rod)
 CX = Cut 'X'
 GP = Gate Post

ID = Inside Diameter
 OD = Outside Diameter
 PP = Power Pole
 PW = Nail with Plastic Washer
 RCP = Reinforced Concrete Pipe
 RH = Red Head (Nail in wire)
 ROW = Right of Way
 RW = Nail with Reflective Round Washer

R/W = Iron ROW Roll
 SFP = Steel 'T' Post
 SW = Nail with Square Weld Washer
 TP = Telephone Pedestal
 TW = Nail with Round Metal Washer
 WFP = Wood Fence Post
 X = X Nails



DOCUMENT No. 01010 FILED FOR RECORD THE 9th DAY OF November 1992 AT 8:57 P.M. STATE OF IOWA, CHICKASAW COUNTY.
 RECORDING FEE \$ 5.00 BY Mary C. Murray Recorder
 TRANSFER FEE \$ -- O'CLOCK A. M. BOOK 150 DEED PAGE 377 BY MARY C. MURRAY Deputy

UNITED STATES PUBLIC LAND SURVEY CORNER CERTIFICATE

OF

Land Survey Monuments situated in Section 17 1/2, Township 96, Range 14
 of the Fifth Principal Meridian, Chickasaw County, Iowa.
 Previously recorded in _____ in County Recorder's Office.

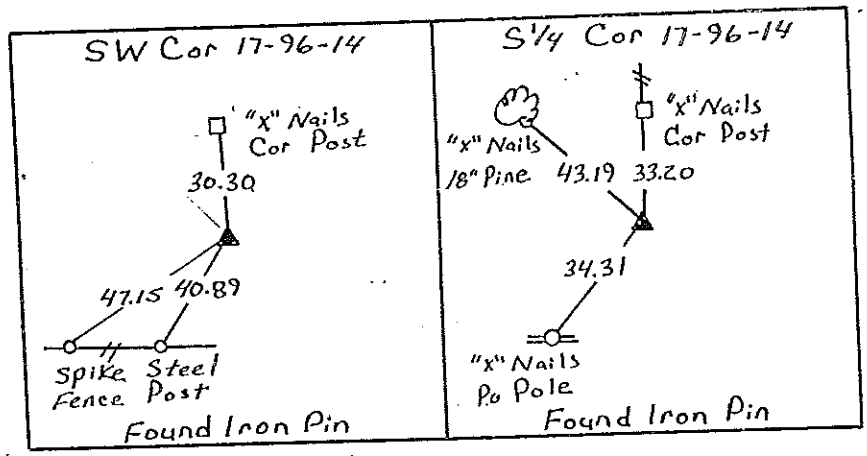
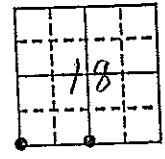
(Show reason for preparing this certificate, the evidence and detailed procedures used in establishing the corner positions and monumentation found or placed.)
 Monument Description and Remarks:

SW Cor = Found Iron Pin From County Ties
S 1/4 Cor = Found Iron Pin From County Ties

PLAN - VIEW

(Show a minimum of three reference ties to durable physical objects, relevant monuments and physical conditions that will enable recovery of the corner.)

Section 18-96-14
 As referred to in
 Engr. Tie Book

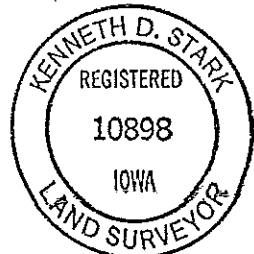


Cor. B
 18-96-14

Cor. A

I hereby certify that the survey work was completed and this certificate was prepared by me or under my direct personal supervision and that I am a duly registered land surveyor under the laws of the state of Iowa.
 Signature: Kenneth D. Stark
 Name typed or printed: Kenneth D. Stark
 Date: 10-20-92 Reg. No. 10898

Corners	List Corners to be Indexed Section	Twp	Range
SW	17	96	14
S 1/4	17	96	14



SEAL

Placed
 in the Book
 11/9/92