

UNITED STATES PUBLIC LAND SURVEY CORNER CERTIFICATE

Land Survey Monuments Situated in Section 18, Township 96 N, Range 14 W, of the Fifth Principle Meridian, CHICKASAW County, Iowa Previously Recorded in _____ in County Recorder's Office

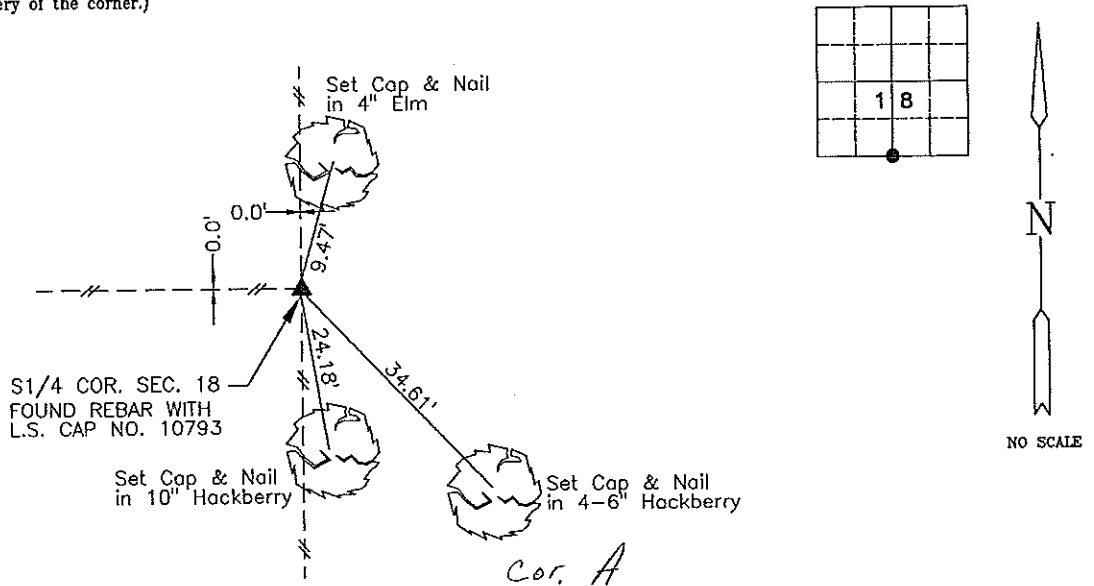
(book, page, document number, etc.)

(Show reason for preparing this certificate, the evidence and detailed procedures used in establishing the corner positions and monumentation found or placed.)

Monument Description and Remarks: S1/4 COR. SEC. 18 - FOUND REBAR WITH L.S. CAP NO. 10793

PLAN-VIEW

(Show a minimum of three reference ties to durable physical objects, relevant monuments and physical conditions that will enable recovery of the corner.)



I hereby certify that this land surveying document was prepared and the related survey work was performed by me or under my direct personal supervision and that I am a duly licensed Land Surveyor under the laws of the State of Iowa.

Brian J. Diehl October 29, 1997
Brian J. Diehl Date

License number 13644

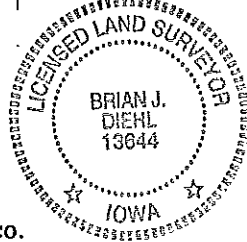
My license renewal date is December 31, 1997.

Sheets covered by this seal: 1

SEAL

PREPARED BY:

WHKS & CO.

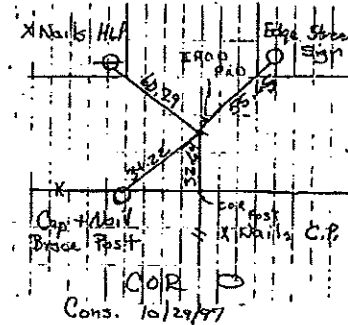
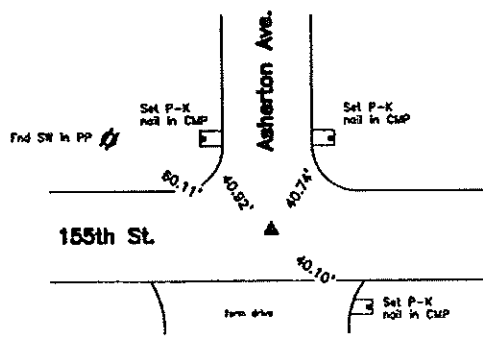


Corners	Section	Twp	Range
S1/4 COR.	18	96	14

*Cor A 18-96-14
Placed in Tie Book
10/31/97*

Center

CO ENGR'S RECORD TIES



Cor O

Monument Description, Remarks, and Plan View:

Center - History of Corner =

- 1996, Mar. 14 - "REBAR" per Floyd County Recorder's Book I.S. 8 Page 126.
 - 1996, Mar. 14 - "REBAR" per Chickasaw County Recorder's Book 160 Pages 200 and 202.
 - 1997, Sep. 18 - "FOUND 1" PIPE" per Chickasaw County Recorder's Book 165 Page 182.
 - 1997, Oct. 29 - "FOUND 1" PIPE" per Chickasaw County Recorder's Book 165 Page 353.
 - 2001, Dec. 26 - "FND. 1" PIPE" per Chickasaw County Recorder's File 2002-0331.
- Previous County Engineer's ties indicate that corner is monumented with "Found large Rock with Point Up & Brick Beside, Put IRON PIN over High Point & Tied" and "Large Rock".
 Current County Engineer's ties indicate that corner is monumented "IRON PIN" with ties as shown above.

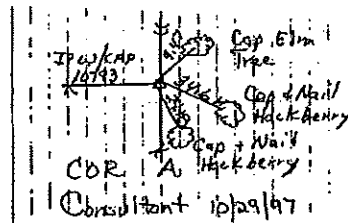
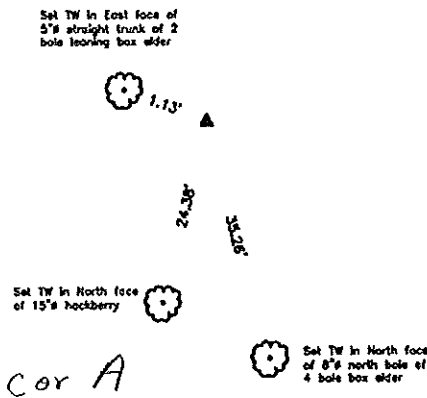
Corner Recovery =

Searched area with a metal detector, excavated a 0.5' x 0.6' deep hole at magnetic reading. Found a 1" ID x 1.1' iron pipe, 0.5' deep. Probed on all sides of pipe and hit stone on west side of pipe. Excavated a 1' x 1.9' deep hole on the west side of pipe and found an 8" (North-South) x 9" (East-West) hard gray pointed stone, 1.6' deep, (pipe is leaning slightly west with top of pipe over high point of stone), 1'± East of apparent centerline of traveled surface of gravel road North and 2'± North of apparent centerline of traveled surface of gravel road East-West. Location of monuments found match that of record, monuments found match that of record and record ties are within reason. Therefore, used pipe as the correct corner. All ties are plumb distance.

This certificate is being prepared because there are no longer three valid ties of record.

S/4 Corner

CO ENGR'S RECORD TIES



Cor A

Monument Description, Remarks, and Plan View:

S/4 Corner History of Corner =

- 1996, Mar. 14 - "REBAR/CAP # 10793" per Floyd County Recorder's Book I.S. 8 Pages 124B, 125B and 126.
 - 1996, Mar. 14 - "REBAR/CAP # 10793" per Chickasaw County Recorder's Book 160 Pages 200 and 202.
 - 1997, Sep. 18 - "FOUND REBAR WITH L.S. CAP NO. 10793" per Chickasaw County Recorder's Book 165 Page 182.
 - 1997, Oct. 29 - "FOUND REBAR WITH L.S. CAP NO. 10793" per Chickasaw County Recorder's Book 165 Page 353.
- Previous County Engineer's ties indicate that corner is monumented with "Post".
 Current County Engineer's ties indicate that corner is monumented with "IP W/CAP 10793" with ties as shown above.

Corner Recovery =

Searched area with a metal detector, excavated a 4' x 3' deep hole at rock and dirt pile and fence line remnants near record distance south of Center of Section. Found a 1/2" x 2.0' red capped iron rod (#10793) bent and leaning SW under boulder pile and twisted in fence remnants. Location of monument found matches that of record and monument found matches that of record. Tied out base of rod, removed and straightened, attempted to drive rod at base location and hit small stones. Excavated on north side of base location and found a hole in rocks with fence wire loops running North-South and West around hole indicating that hole was at the location of a fence corner which matches record certificate. Therefore, reset rod upright in hole location and used it as the correct corner. All ties are plumb distance.

This certificate is being prepared because there are no longer three valid ties of record.

Legend

- | | | |
|--------------------------------------|--|------------------------------------|
| BC = Nail with Bottle Cap | ID = Inside Diameter | R/W = Iron ROW Wall |
| BP = Brace Post | OD = Outside Diameter | SFP = Steel T Post |
| CP = Corner Post | PP = Power Pole | SW = Nail with Square Metal Washer |
| CMP = Corrugated Metal Pipe | PPW = Nail with Plastic Washer | TP = Telephone Pedestal |
| CM = 4" Sq Concrete Monument with | RCP = Reinforced Concrete Pipe | TW = Nail with Round Metal Washer |
| 1/2" iron rod in center (tie to rod) | RH = Red Head (Nail in wire) | WFP = Wood Fence Post |
| CX = Out 'X' | ROW = Right of Way | X = X Nails |
| GP = Gate Post | RW = Nail with Reflective Round Washer | |



DOCUMENT No. 01010 FILED FOR RECORD THE 9th DAY OF November STATE OF IOWA, CHICKASAW COUNTY.
 RECORDING FEE \$ 5.00 92 AT 8:57 Mary C. Murray Recorder
 TRANSFER FEE \$ -- O'CLOCK A. M. BOOK 150 Deed PAGE 377 By MARY C. MURRAY Deputy

UNITED STATES PUBLIC LAND SURVEY CORNER CERTIFICATE

OF

Land Survey Monuments situated in Section 17 1/2, Township 96, Range 14
17 of the Fifth Principal Meridian, Chickasaw County, Iowa.
 Previously recorded in _____ in County Recorder's Office.

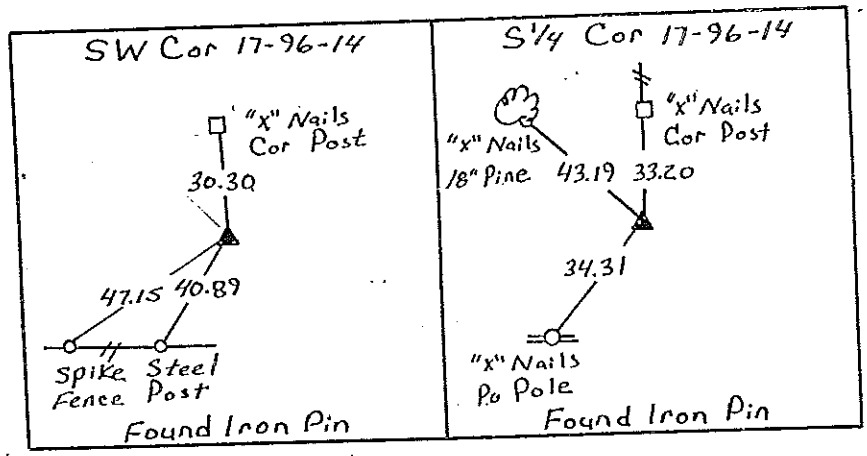
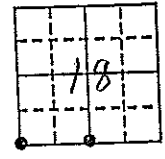
(Show reason for preparing this certificate, the evidence and detailed procedures used in establishing the corner positions and monumentation found or placed.)
 Monument Description and Remarks:

SW Cor = Found Iron Pin From County Ties
S 1/4 Cor = Found Iron Pin From County Ties

PLAN - VIEW

(Show a minimum of three reference ties to durable physical objects, relevant monuments and physical conditions that will enable recovery of the corner.)

Section 18-96-14
 As referred to in
 Engr. Tie Book

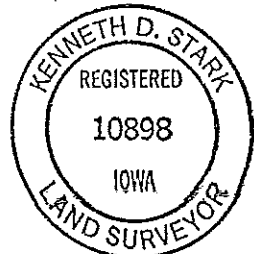


Cor. B
 18-96-14

Cor. A

I hereby certify that the survey work was completed and this certificate was prepared by me or under my direct personal supervision and that I am a duly registered land surveyor under the laws of the state of Iowa.
 Signature: Kenneth D. Stark
 Name typed or printed: Kenneth D. Stark
 Date: 10-20-92 Reg. No. 10898

Comers	List Section	to be Indexed Twp	Range
SW	17	96	14
S 1/4	17	96	14



SEAL

Placed
 in the Book
 11/9/92