

UNITED STATES PUBLIC LAND SURVEY CORNER CERTIFICATE

OF 7

Land Survey Monuments situated in Section 19, Township 96, Range 14, of the Fifth Principal Meridian, Chickasaw County, Iowa. Previously recorded in NA in County Recorder's Office.

(Show reason for preparing this certificate, the evidence and detailed procedures used in establishing the corner positions and monumentation found or placed.)

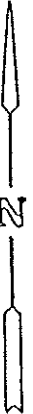
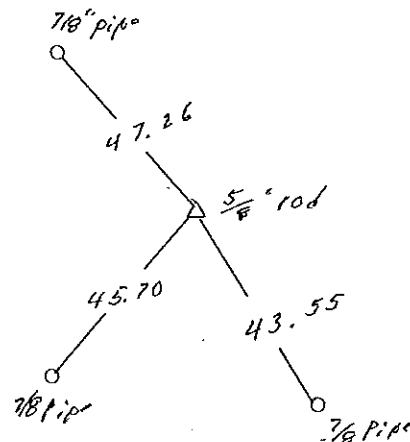
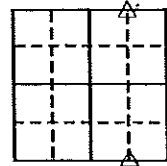
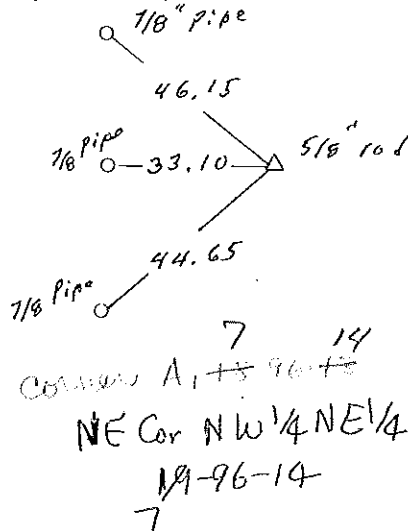
Monument Description and Remarks: Found 5/8" pin NE cor NW 1/4 NE 1/4

Found 5/8" pin SE cor SW 1/4 SE 1/4

Section 7-96-14
As referred to in
Engr. Tie Book

PLAN - VIEW

(Show a minimum of three reference ties to durable physical objects, relevant monuments and physical conditions that will enable recovery of the corner.)



I hereby certify that the survey work was completed and this certificate was prepared by me or under my direct personal supervision and that I am a duly registered land surveyor under the laws of the state of Iowa.

Signature: Robert L. Haylock
Name typed or printed: Robert L. Haylock
Date: 4-23-94 Reg. No. 5680

SEAL

List Corners to be Indexed
Corners Section Twp Range

NE cor NW 1/4 NE 1/4 19 96 14
Corner A₁ 19-96-14

SE Sw 1/4 SE 1/4 19 96 14
Corner A₁ 19-96-14

Placed in tie Book
5/4/94