

#2016-1200

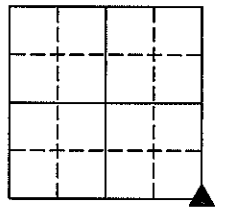
PREPARED BY: DARYL EIFFLER, 215 N ADAMS, MASON CITY, IOWA 50401, 641-424-6344

UNITED STATES PUBLIC LAND SURVEY CORNER CERTIFICATE OF

Land Survey Monuments situated in Section 18, Township 96 NORTH, Range 14 WEST, of the Fifth Principal Meridian, CHICKASAW County, Iowa
Previously recorded in BOOK 150, PAGE 377 in County Recorder's Office.
(book, page)

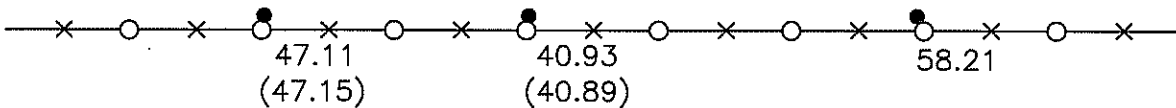
Monument Description and Remarks: _____
SE CORNER - FOUND BENT 3/4" REBAR FLUSH AND 4' NORTH OF CENTERLINE
USING RECORDED TIES. PULLED REBAR AND STRAIGHTENED AND RESET IN HOLE 0.3' DOWN.
HELD REBAR AS CORNER.
SET TIES AS SHOWN.

PLAN - VIEW



160TH ST.
GR

▲ 3/4" REBAR



SE CORNER

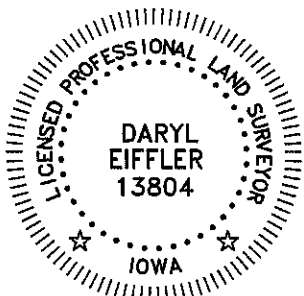
LEGEND

- - UTILITY POLE
- ×××○× - EXISTING FENCE, FENCE POST
- ▲ - FOUND LAND CORNER
- △ - SET LAND CORNER
- - FOUND NEAR EDGE OF STEEL FENCE POST
- - SET REFERENCE TIES ARE A BRASS DISK STAMPED PLS 13804 UNLESS NOTED
- HMA- HOT MIX ASPHALT SURFACING
- PCC- PORTLAND CEMENT CONCRETE SURFACING
- SRP- SURVEY REFERENCE POINT
- GR- GRAVEL SURFACING
- YPC- YELLOW PLASTIC CAP
- (00.00)- RECORDED DISTANCE

COR B Sec 18 - 96.19

PROJECT NO. 12273

FILE 961418



I HEREBY CERTIFY THAT THIS LAND SURVEYING DOCUMENT WAS PREPARED AND THE RELATED SURVEY WORK WAS PERFORMED BY ME OR UNDER MY DIRECT PERSONAL SUPERVISION AND THAT I AM A DULY LICENSED PROFESSIONAL LAND SURVEYOR UNDER THE LAWS OF THE STATE OF IOWA.

FOR SEH
Daryl Eiffler 9/6/16
DATE
DARYL EIFFLER
LICENSE NUMBER 13804
MY LICENSE RENEWAL DATE IS DECEMBER 31, 2016
SHEETS COVERED BY THIS SEAL: 1

List Corners to be Indexed
Corners Section Twp Range
SE 1/4 18 96N 14W

215 NORTH ADAMS
MASON CITY, IOWA 50401
641-424-6344



NY
MC
5

DOCUMENT No. 01010 FILED FOR RECORD THE 9th DAY OF November 1992 AT 8:57 P.M. BY Mary C. Murray Recorder
RECORDING FEE \$ 5.00 O'CLOCK A. M. BOOK. 150 Deed PAGE 377 By MARY C. MURRAY Deputy

UNITED STATES PUBLIC LAND SURVEY CORNER CERTIFICATE

OF

Land Survey Monuments situated in Section 17, Township 96, Range 14, of the Fifth Principal Meridian, Chickasaw County, Iowa. Previously recorded in _____ in County Recorder's Office.

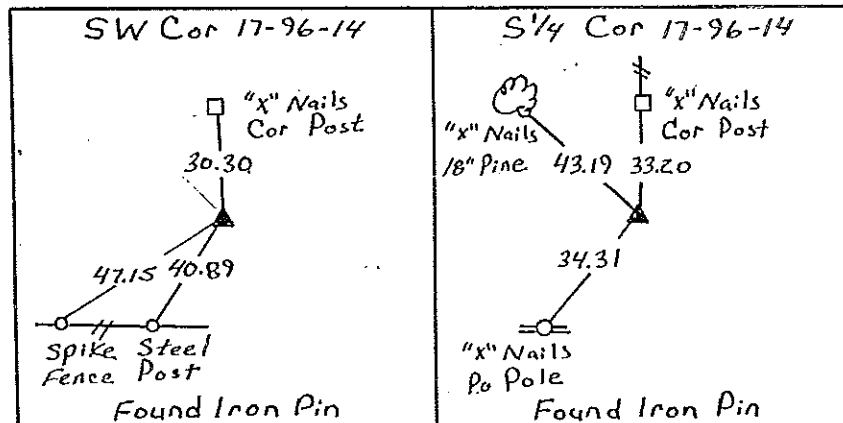
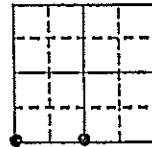
(Show reason for preparing this certificate, the evidence and detailed procedures used in establishing the corner positions and monumentation found or placed.)

Monument Description and Remarks:

SW Cor = Found Iron Pin From County Ties
S 1/4 Cor = Found Iron Pin From County Ties

PLAN - VIEW

(Show a minimum of three reference ties to durable physical objects, relevant monuments and physical conditions that will enable recovery of the corner.)



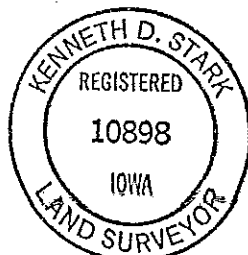
Cor. B
18-96-14

Cor A

I hereby certify that the survey work was completed and this certificate was prepared by me or under my direct personal supervision and that I am a duly registered land surveyor under the laws of the state of Iowa.

Signature: Kenneth D. Stark
Name typed or printed: Kenneth D. Stark,
Date: 10-20-92 Reg. No. 10898

Corners	List Corners to be Indexed Section	Twp	Range
SW	17	96	14
S 1/4	17	96	14



SEAL

Placed in the Book 11/9/92