

DOCUMENT No. 1500 FILED FOR RECORD THE 29th DAY OF August 2000 AT 9:44 STATE OF IOWA, CHICKASAW COUNTY.
 RECORDING FEE \$ 6.00 BY Cindy Meersmith Recorder
 TRANSFER FEE \$ _____ O'CLOCK A M. BOOK 2000 PAGE 1500 By Steve Busse Deputy

STEVE BUSSE P.O. BOX 241 508 ELM STREET ALLISON, IOWA 50602 319-267-2519

UNITED STATES PUBLIC LAND SURVEY CORNER CERTIFICATE

Land Survey Monuments situated in Section 1, Township 96 North, Range 14 west, of the Fifth Principal Meridian, CHICKASAW County, Iowa.

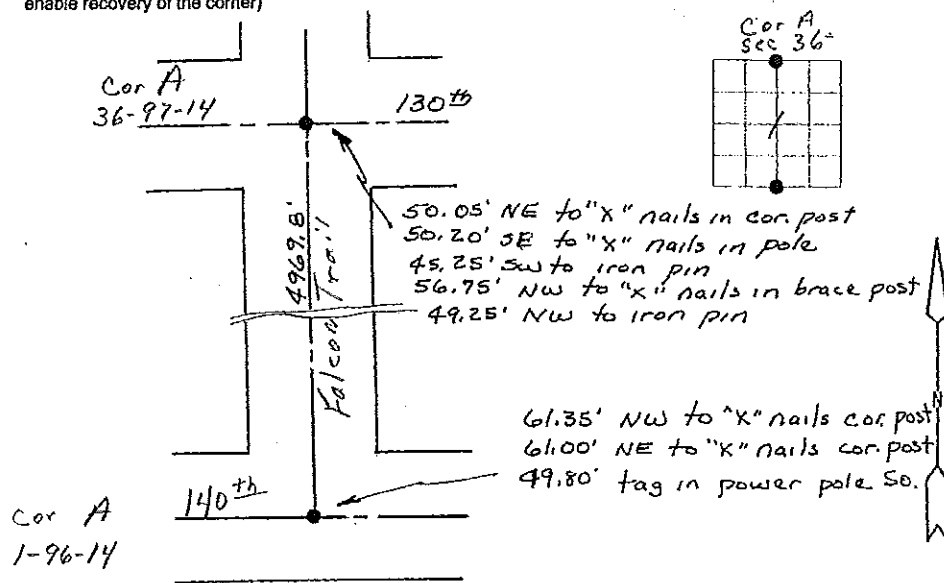
Previously recorded in N/A in County Recorder's Office.
 (book, page, document number, etc.)

(Show reason for preparing this certificate, the evidence and detailed procedures used in establishing the corner positions and monumentation found or placed.)

Monument Description and Remarks: Found twisted rebar at center of intersection at N 1/4 corner. Found nail in asphalt at center line blacktop at South 1/4 corner.

PLAN - VIEW

(Show a minimum of three reference ties to durable physical objects, relevant monuments and physical conditions that will enable recovery of the corner)



I hereby certify that the survey work was completed and this land surveying document was prepared by me or under my direct personal supervision and that I am a duly licensed land surveyor under the laws of the state of Iowa

Signature: Steve Busse
 Name typed or printed: STEVE BUSSE

Date: 8/21/00 Reg. No. 9018

My license renewal date is December 31, 2000

SEAL

List Corners to be Indexed			
Corners	Section	Twp	Range
N 1/4 COR.	1	96	14
S 1/4 COR.	1	96	14