

Instrument #: 2021-1416
 08/23/2021 10:42:03 AM Total Pages: 1
 SCC SECTION CORNER CERTIFICATES
 Recording Fee: \$ 7.00
 Shirley Troyna, Recorder, Chickasaw County Iowa

Reserved for Court

Kyle J. Helland, 6109 Chancellor Drive, Cedar Falls, Iowa 50613-6916, (319)-266-0161

UNITED STATES PUBLIC LAND SURVEY CORNER CERTIFICATE OF

LAND SURVEY MONUMENTS SITUATED IN SECTION NO. 20, TOWNSHIP NO. 96 NORTH, RANGE
 NO. 14 WEST OF THE FIFTH PRINCIPAL MERIDIAN, CHICKASAW COUNTY, IOWA.

PREVIOUSLY RECORDED IN _____ N/A _____.

(SHOW REASON FOR PREPARING THIS CERTIFICATE, THE EVIDENCE AND DETAILED PROCEDURES USED IN ESTABLISHING THE CORNER POSITIONS AND MONUMENTATION FOUND OR PLACED.)

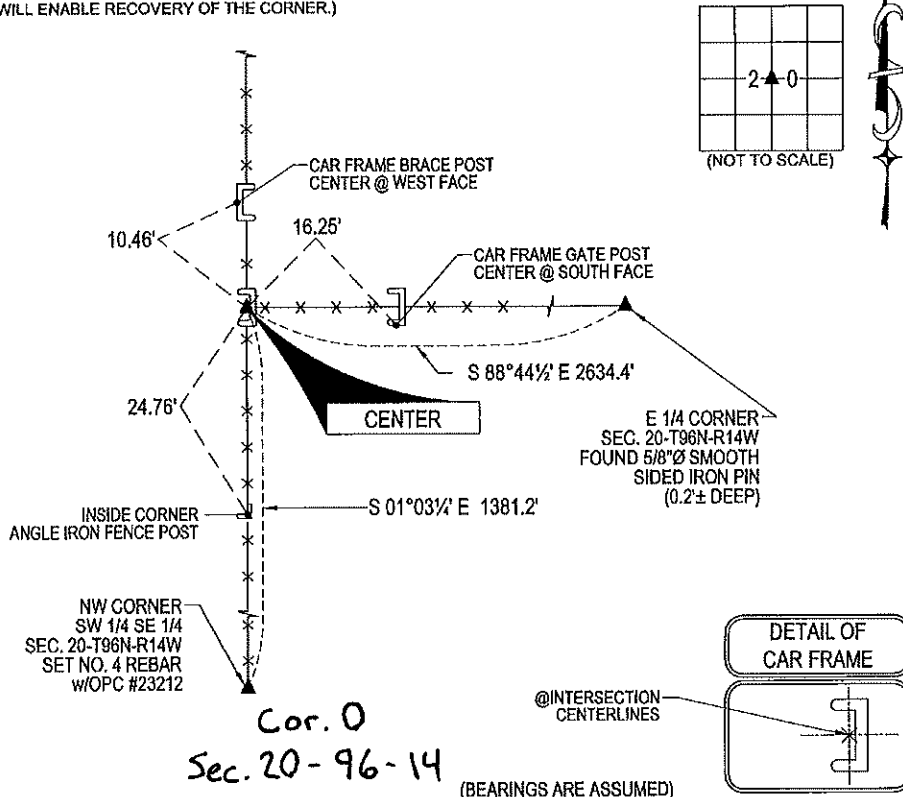
MONUMENT DESCRIPTION AND REMARKS:

NO USPLSCC ON FILE. SURVEY COMPLETED IN THE SE 1/4 OF SEC. 20-T96N-R14W.

→ **CENTER:** NO CHICKASAW COUNTY ENGINEER TIES AVAILABLE. SEARCHED AREA AND FOUND STEEL CAR FRAME CORNER POST IN P.C.C. BASE AT INTERSECTION OF EXISTING POSESSION FENCE LINES RUNNING NORTH, EAST, AND SOUTH. SEARCHED AND PROBED AROUND CORNER POST, FOUND NOTHING BUT DO NOTE CAR FRAME CORNER POST HAD BEEN SET IN LARGE P.C.C. BASE. BASED ON REVIEW OF HISTORICAL AERIALS, IT APPEARS THAT FENCE LINES HAVE BEEN IN PLACE ALONG THE CENTER SECTION LINES DATING BACK TO THE 1930'S. BASED ON LONGSTANDING OCCUPATION LINES, UTILIZED CENTERLINE OF THE CAR FRAME CORNER POST AT ITS BASE AS THE CENTER OF SECTION. SEE DETAIL BELOW FOR MEASUREMENT POINT.

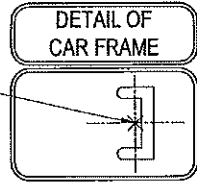
PLAN VIEW

(SHOW A MINIMUM OF THREE REFERENCE TIES TO DURABLE PHYSICAL OBJECTS, RELEVANT MONUMENTS AND PHYSICAL CONDITIONS THAT WILL ENABLE RECOVERY OF THE CORNER.)



Cor. 0
 Sec. 20-96-14

(BEARINGS ARE ASSUMED)



HES HELLAND ENGINEERING & SURVEYING, LTD.
 6109 Chancellor Drive
 Cedar Falls, Iowa 50613-6916
 (319)-266-0161

BRASS TAG = 4d. NAIL & 13/16"Ø BRASS TAG DRAWN BY: KDA
 SHINER = 1"Ø STEEL SHINER w/MASONRY NAIL
 OPC = PLASTIC CAP (O=ORANGE, R=RED, Y=YELLOW)
 (00) RECORDED AS FILE NAME: 21-168-29.DWG



I hereby certify that this land surveying document was prepared and the related survey work was performed by me or under my direct personal supervision and that I am a duly licensed Professional Land Surveyor under the laws of the State of Iowa.
Kyle J. Helland 06/18/2021
 Kyle J. Helland
 License Number 23212
 My license renewal date is December 31, 2021.
 All pages or sheets are covered by this seal except:

LIST CORNERS TO BE INDEXED			
CORNER	SECTION	TOWNSHIP	RANGE
CENTER	20	96N	14W