

Instrument #: 2021-1415
 08/23/2021 10:42:03 AM Total Pages: 1
 SCC SECTION CORNER CERTIFICATES
 Recording Fee: \$ 7.00
 Shirley Troyna, Recorder, Chickasaw County Iowa

Reserved for Co

Kyle J. Helland, 6109 Chancellor Drive, Cedar Falls, Iowa 50613-6916, (319)-266-0161

UNITED STATES PUBLIC LAND SURVEY CORNER CERTIFICATE OF

LAND SURVEY MONUMENTS SITUATED IN SECTION NO. 20, TOWNSHIP NO. 96 NORTH, RANGE
 NO. 14 WEST OF THE FIFTH PRINCIPAL MERIDIAN, CHICKASAW COUNTY, IOWA.

PREVIOUSLY RECORDED IN N/A.

(SHOW REASON FOR PREPARING THIS CERTIFICATE, THE EVIDENCE AND DETAILED PROCEDURES USED IN ESTABLISHING THE CORNER POSITIONS AND MONUMENTATION FOUND OR PLACED.)

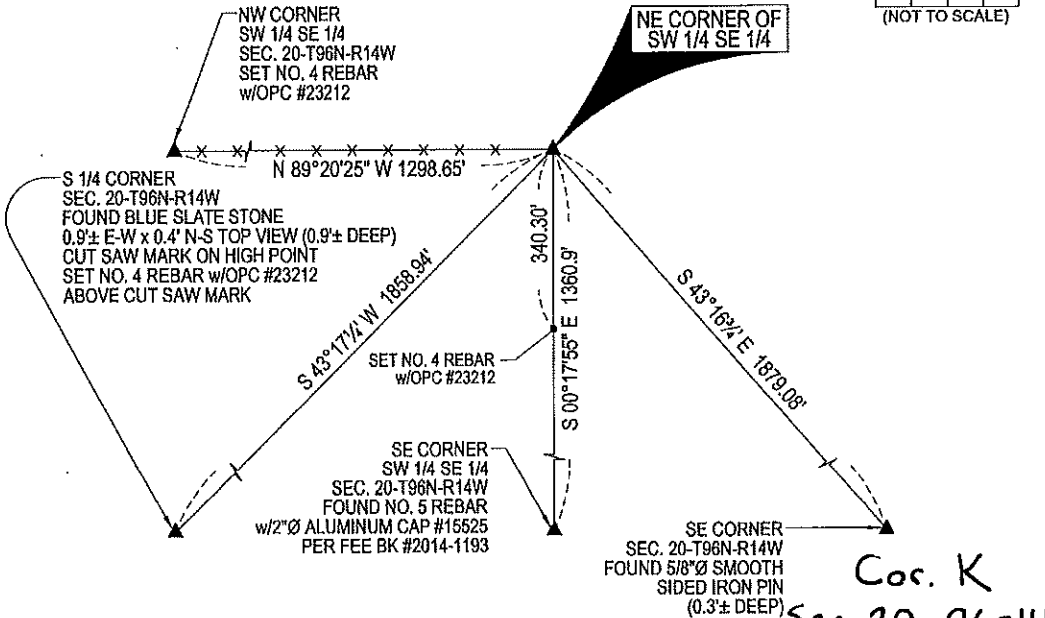
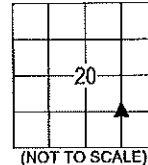
MONUMENT DESCRIPTION AND REMARKS:

NO USPLSCC ON FILE. SURVEY COMPLETED IN THE SE 1/4 OF SEC. 20-T96N-R14W.

→ **NE CORNER SW 1/4 SE 1/4:** NO CHICKASAW COUNTY ENGINEER TIES AVAILABLE. COMPLETED A LARGE SEARCH OF THE AREA (APPROX. 30'± E-W x 10'± N-S) IN LINE WITH EXISTING POSSESSION FENCE LINE TO WEST WITH METAL DETECTOR AND PROBED, FOUND NOTHING. FOUND PILE OF FENCE POSTS LYING IN THE FENCE LINE TO THE WEST, WHICH APPEARS TO CONTAIN THE PREVIOUS CORNER POST, WHICH HAS BEEN REMOVED. WERE UNABLE TO FIND ANY EVIDENCE OF IT'S PRIOR LOCATION. THEREFORE SET NO. 4 REBAR w/OPC #23212 AT CALCULATED INTERSECTION OF 1/4 1/4 LINES. CORNER FITS NORTHING LOCATION OF SAID EXISTING FENCE LINE WEST.

PLAN VIEW

(SHOW A MINIMUM OF THREE REFERENCE TIES TO DURABLE PHYSICAL OBJECTS, RELEVANT MONUMENTS AND PHYSICAL CONDITIONS THAT WILL ENABLE RECOVERY OF THE CORNER.)



(NO OTHER DURABLE, GERMANE PHYSICAL OBJECTS TO REFERENCE TO)

(BEARINGS ARE ASSUMED)



HELLAND ENGINEERING & SURVEYING, LTD.
 6109 Chancellor Drive
 Cedar Falls, Iowa 50613-6916
 (319)-266-0161

BRASS TAG = 4d. NAIL & 13/16"Ø BRASS TAG DRAWN BY: KDA
 SHINER = 1"Ø STEEL SHINER w/MASONRY NAIL
 OPC = PLASTIC CAP (O=ORANGE, R=RED, Y=YELLOW)
 (00) RECORDED AS FILE NAME: 21-168-45.DWG



I hereby certify that this land surveying document was prepared and the related survey work was performed by me or under my direct personal supervision and that I am a duly licensed Professional Land Surveyor under the laws of the State of Iowa.
Kyle J. Helland
 Kyle J. Helland
 License Number 23212
 My license renewal date is December 31, 2021.
 All pages or sheets are covered by this seal except:

LIST CORNERS TO BE INDEXED

CORNER	SECTION	TOWNSHIP	RANGE
NE COR. SW 1/4 SE 1/4	20	96N	14W
SE COR. NW 1/4 SE 1/4	20	96N	14W
SW COR. NE 1/4 SE 1/4	20	96N	14W
NW COR. SE 1/4 SE 1/4	20	96N	14W