



Prepared by & Return to: Herald - Reicks Surveying, 10 East Main Street, New Hampton, IA 50658, Ph. 641-394-2725

United States Public Land Survey Corner Certificate

Land Survey Monument situated in
 Section 17, Township 96 North, Range 14 West of the Fifth Principal Meridian, Chickasaw County, Iowa.
 On file in Book 150, Page 377 in the County Recorder's office.

This certificate is being prepared in compliance with Iowa Code Chapter 355.11 because:

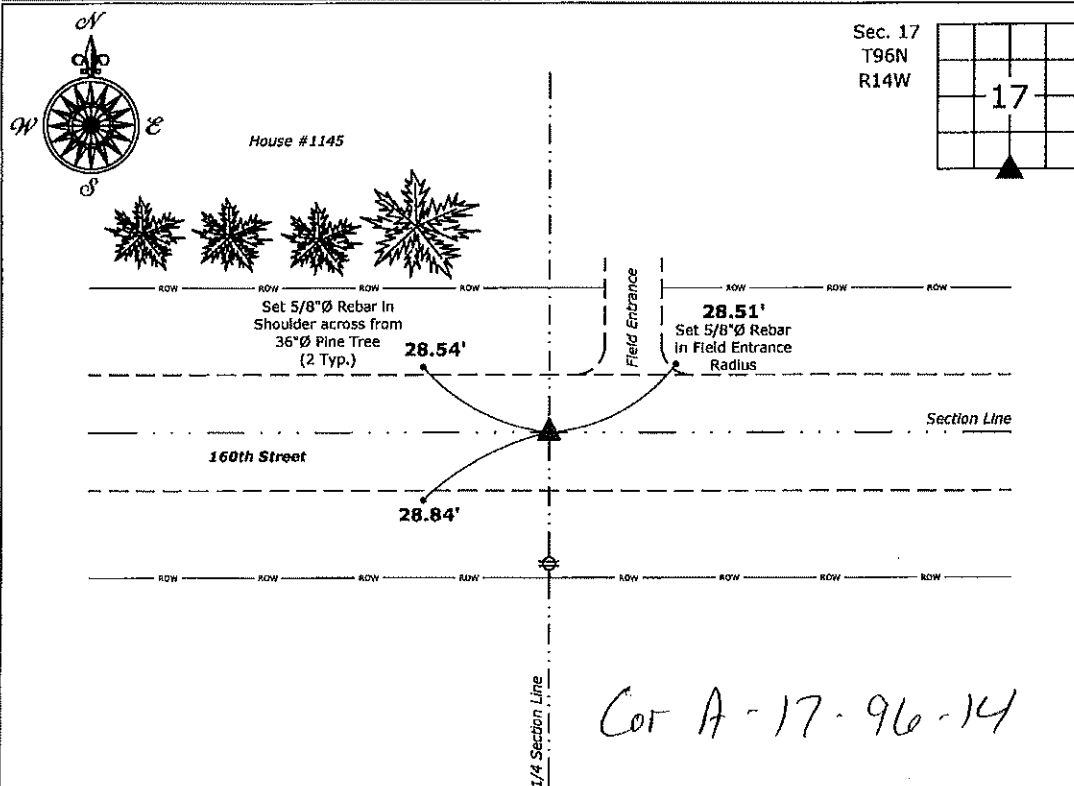
- There is no certificate on file for this corner.
- There are no longer three valid ties of record.
- There are changes to reference ties of record.
- There is change of monumentation of record.
- To clarify description of record monument (ties).

Monument Description and Remarks:

South 1/4 Corner: Found 1/2"Ø Rebar w/Yellow Plastic Cap PLS 9962 with information obtained from a Survey and Plat, as recorded in Document #2002-0331 on file in the County Recorder's Office.

Plan View

(Show a minimum of three reference ties to durable physical objects, relevant monuments and physical conditions that will enable recovery of the corner.)



South 1/4 Corner of Section 17-96-14
 Fd. 1/2"Ø Rebar w/Yellow Plastic Cap PLS 9962



I hereby certify that this land surveying document was prepared and the related survey work was performed by me or under my direct personal supervision and that I am a duly licensed Land Surveyor under the laws of the State of Iowa.

Kirk D. Reicks 12-30-2020
 Kirk D. Reicks Date:

License number 19211
 My license renewal date is December 31, 2022.
 Sheets covered by this seal: Individual sheet only

List Corner to be Indexed

Corner	Section	Twp.	Range
S 1/4	17	96	14

Project Number: 2020-144

FB: Chickasaw 10, Pgs. 48-49

NY
MC
5

DOCUMENT No. 01010 FILED FOR RECORD THE 9th DAY OF November 1992 AT 8:57 P.M. BY Mary C. Murray Recorder
RECORDING FEE \$ 5.00 O'CLOCK A. M. BOOK 150 PAGE 377 BY MARY C. MURRAY Deputy

UNITED STATES PUBLIC LAND SURVEY CORNER CERTIFICATE

OF

Land Survey Monuments situated in Section 17, Township 96, Range 14, of the Fifth Principal Meridian, Chickasaw County, Iowa. Previously recorded in _____ in County Recorder's Office.

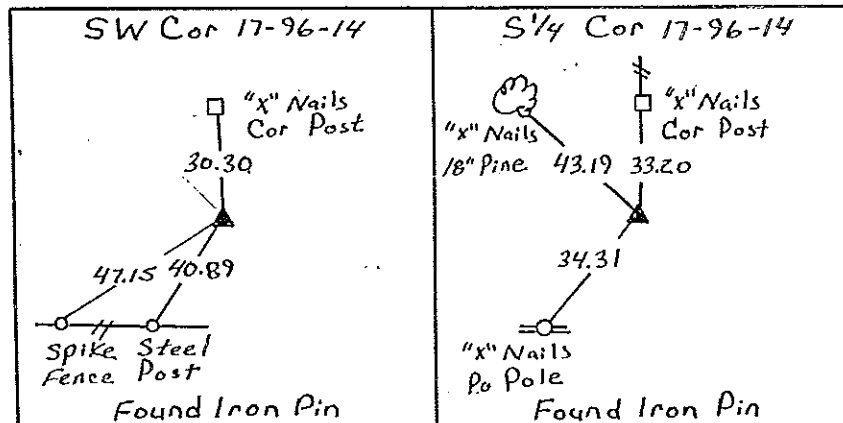
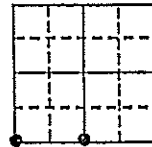
(Show reason for preparing this certificate, the evidence and detailed procedures used in establishing the corner positions and monumentation found or placed.)

Monument Description and Remarks:

SW Cor = Found Iron Pin From County Ties
S¹/₄ Cor = Found Iron Pin From County Ties

PLAN - VIEW

(Show a minimum of three reference ties to durable physical objects, relevant monuments and physical conditions that will enable recovery of the corner.)



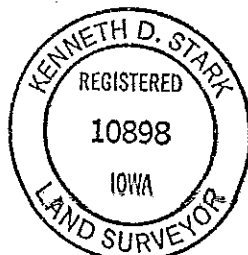
Cor. B
18-96-14

Cor. A

I hereby certify that the survey work was completed and this certificate was prepared by me or under my direct personal supervision and that I am a duly registered land surveyor under the laws of the state of Iowa.

Signature: Kenneth D. Stark
Name typed or printed: Kenneth D. Stark,
Date: 10-20-92 Reg. No. 10898

Corners	List Corners to be Indexed Section	Twp	Range
SW	17	96	14
S ¹ / ₄	17	96	14



SEAL

Placed in the Book 11/9/92