

DOCUMENT NO. _____ FILED FOR RECORD THE 7th DAY OF May STATE OF IOWA, CHICKASAW COUNTY.
 RECORDING FEE \$ 5.00 1992 AT 11:49 Mary C. Murray Recorder
 TRANSFER FEE \$ _____ O'CLOCK A.M. BOOK 149 PAGE 335 By MARY C. MURRAY Deputy

UNITED STATES PUBLIC LAND SURVEY CORNER CERTIFICATE

OF

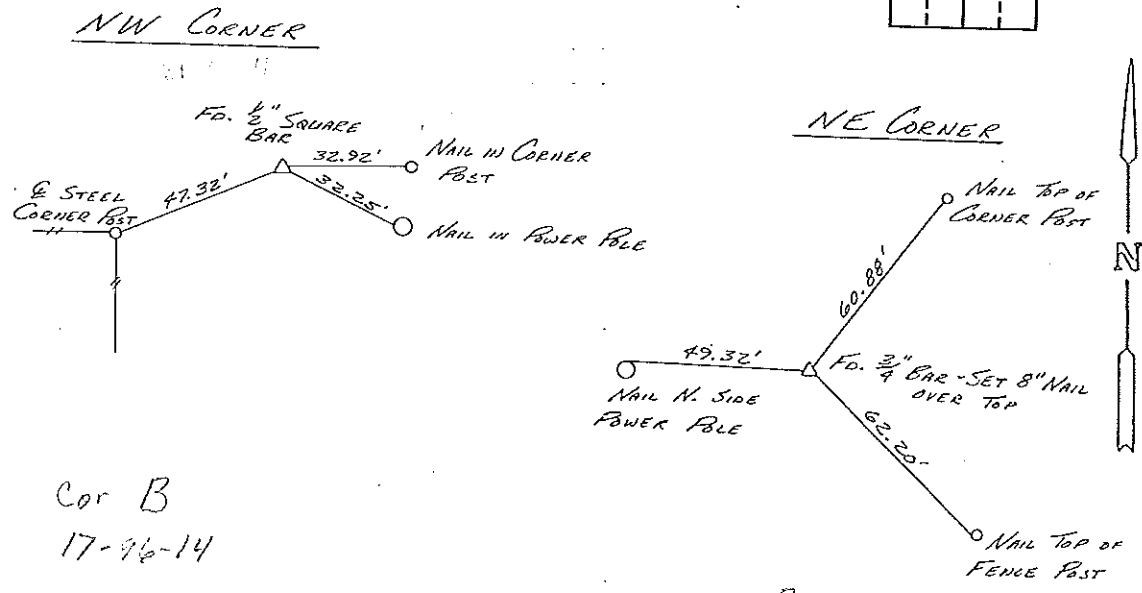
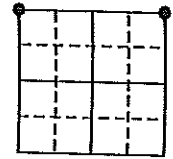
Land Survey Monuments situated in Section 21 16, Township 96, Range 14, of the Fifth Principal Meridian, CHICKASAW County, Iowa.
 Previously recorded in DOES NOT APPLY in County Recorder's Office.

(Show reason for preparing this certificate, the evidence and detailed procedures used in establishing the corner positions and monument description found or placed.)
 Monument Description and Remarks: _____

Section 16-96-14
 As referred to in
 Engr Tie Book.

PLAN - VIEW

(Show a minimum of three reference ties to durable physical objects, relevant monuments and physical conditions that will enable recovery of the corner.)

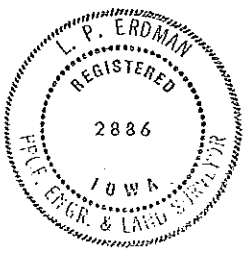


Cor B
 17-96-14

Cor B
 16-96-14

I hereby certify that the survey work was completed and this certificate was prepared by me or under my direct personal supervision and that I am a duly registered land surveyor under the laws of the state of Iowa.
 Signature: L. P. Erdman
 Name typed or printed: L. P. ERDMAN
 Date: 4-21-92 Reg. No. 2886

Corners	List Corners to be Indexed		
	Section	Twp	Range
NW	21	96	14
NE	21	96	14



SEAL

Placed
 in tie
 book 5/92