

Chickasaw Co. Recorder  
 Cindy Messersmith  
**Fee Book 2015-0858**  
 07/06/2015 @0320PM  
 SCC SEC COR CERT # Pages: 1  
 Book: Page: Total Fees: \$7.00

Prepared by & Return to: Herold - Reicks Surveying, 10 East Main Street, New Hampton, IA 50659, Ph. 641-394-2725

**UNITED STATES PUBLIC LAND SURVEY CORNER CERTIFICATE**

Land Survey Monuments situated in Section <sup>21</sup>22, Township 96 North, Range 14 West of the Fifth Principal Meridian, Chickasaw County, Iowa. 1., 2.) Not previously recorded in the County Recorder's office.

This certificate is being prepared in compliance with Iowa Code Chapter 355.11 because:

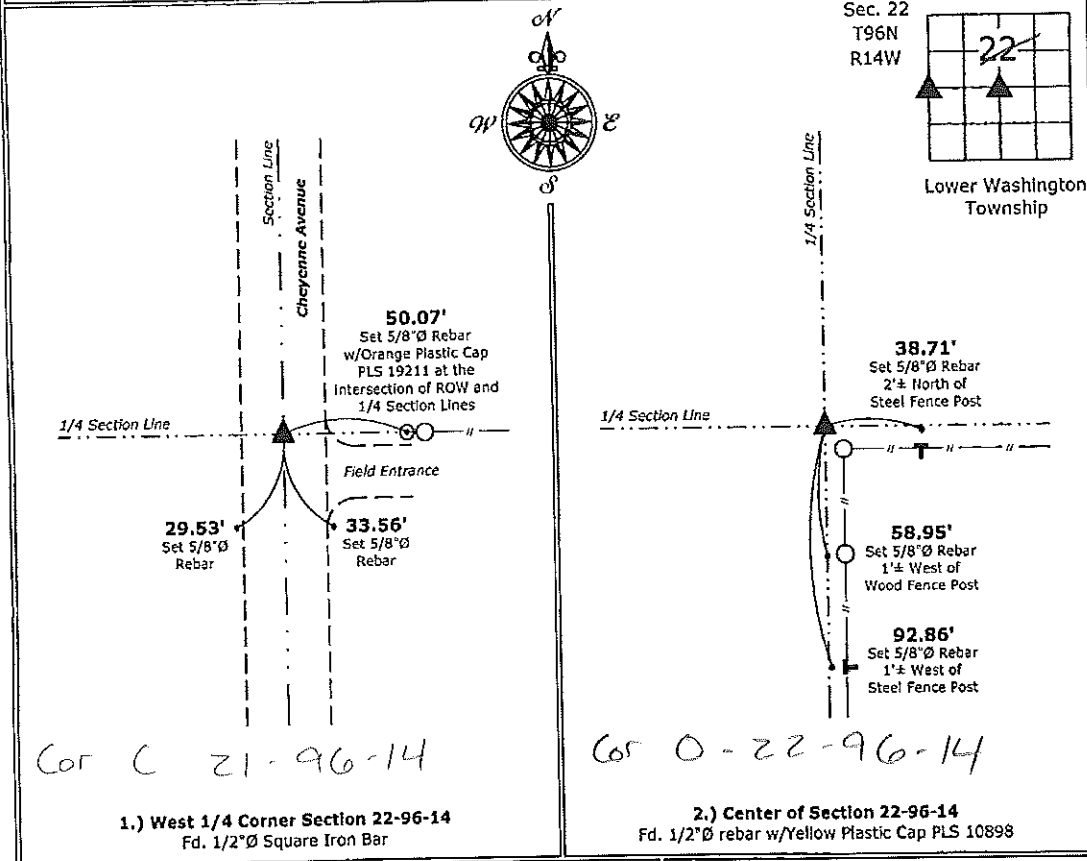
- 1 & 2  There is no certificate on file for this corner.
- There are no longer three valid ties of record.
- There are changes to reference ties of record.
- There is change of monumentation of record.
- To clarify description of record monument (ties).

**Monument Description and Remarks:**

- 1.) **West 1/4 Corner:** Fd. 1/2"Ø Square Iron Bar with information obtained from the County Engineer's office.
- 2.) **Center:** Fd. 1/2"Ø rebar w/Yellow Plastic Cap PLS 10898 at the Intersection of possession line fences from the South and East with information obtained from a Survey and Plat of Parcel C in said Section made by Kenneth Stark, recorded in Book 162, Page 236, on file in the County Recorder's office.

**PLAN - VIEW**

(Show a minimum of three reference ties to durable physical objects, relevant monuments and physical conditions that will enable recovery of the corner.)



I hereby certify that this land surveying document was prepared and the related survey work was performed by me or under my direct personal supervision and that I am a duly licensed Land Surveyor under the laws of the State of Iowa.

*Kirk D. Reicks 7-6-15*  
 Kirk D. Reicks Date:

License number 19211  
 My license renewal date is December 31, 2016.  
 Sheets covered by this seal: Individual sheet only

List Corners to be Indexed			
Corners	Section	Twp.	Range
W 1/4	22	96	14
CTR	22	96	14

Project Number: 2014-258  
 FB: Chickasaw County 7, Pgs. 37-38

File: S:\\_C3D Projects\County Control Systems\CHICKASAW\CHICK-18.dwg, 7/16/2015 1:04:55 PM