

Sec 15-96-14
As referred to in
Emp. Tie Book

Chickasaw Co. Recorder
Cindy Messersmith
Fee Book 2010-1111
07/28/2010 @0217PM
SCC SEC COR CERT
Book: Page: # Pages: 1
Total Fees: \$9.00

PREPARED BY: North Star Land Surveyors LLC, 107 Pine Street, New Hampton, IA 50655, Phone: 641-384-3448

UNITED STATES PUBLIC LAND CORNER CERTIFICATE

OF: 15

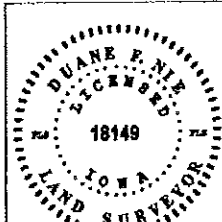
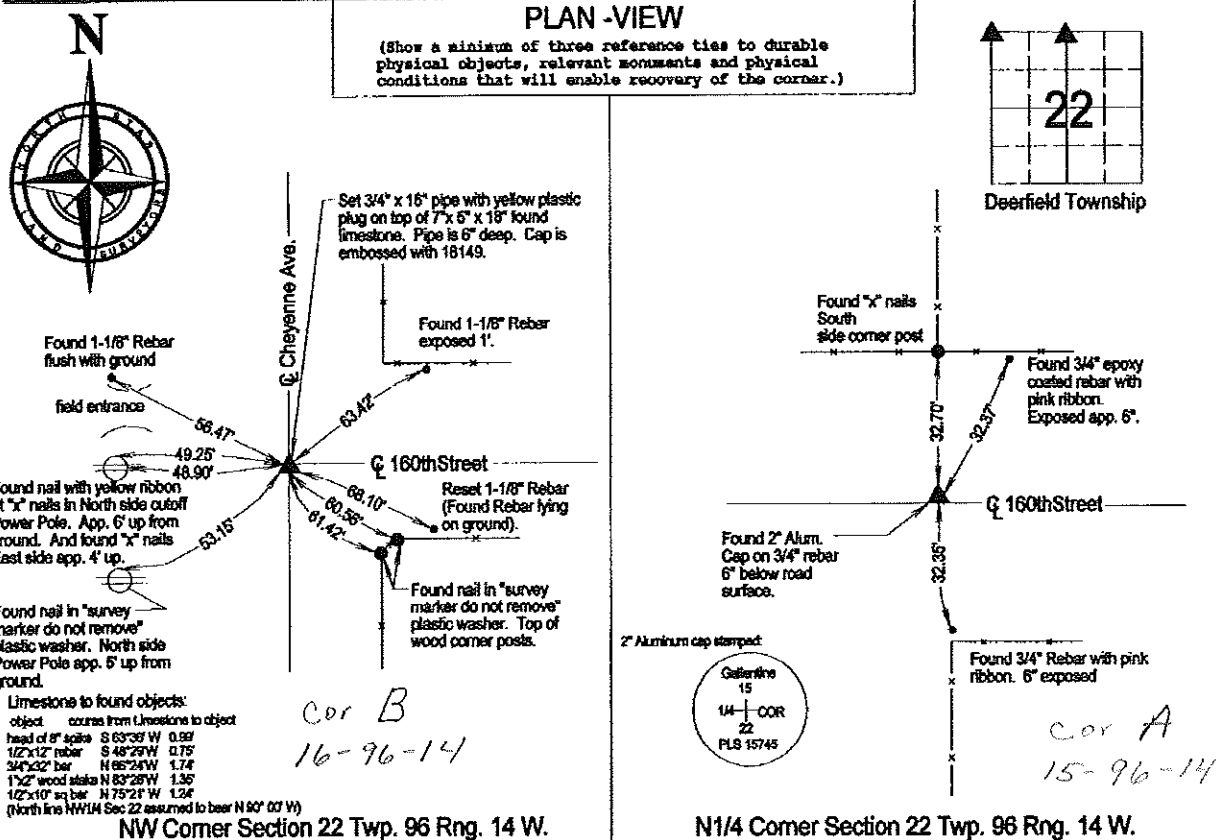
Land Survey Monuments situated in Section 22, Township 96 North, Range 14 West of the Fifth Principal Meridian, Chickasaw County, Iowa. Previously recorded in NW Corner: bk 149 pg 335 & doc. 2009-0294 N1/4 Corner: doc. 2005-1122 in Office of County Recorder.

(Book, page, document number, etc.)
(Show reason for preparing this certificate, the evidence and detailed procedures used in establishing the corner positions and monumentation found or placed.)

Monument Description and Remarks:

NW Corner Section 22 Twp. 96 Rng. 14 W.: Found 8" spike lying horizontally with head bent in upward direction, lying in East/West direction 0.7' deep. Found 7/8" x 3/2" bar 16" deep bent toward Southeast. Found 1/2" x 12" rebar 20" deep laying horizontally in North-Northwest/South-Southeast direction. Found 1" x 2" wood stake 20" deep leaning toward Southeast. Found 1/2" x 10" square rebar 20" deep leaning toward Southeast. Found 2" x 2" wood stake along South side and 6" below 3/2" bar. Found 7" x 5" x 18" limestone 24" deep. Limestone was standing on end and leaning toward South. Found "disturbed soil" evidence of previous excavation above limestone. County Engineer's corner tie record states "Limestone 7 x 18". County Engineer's record also states "Limestone Placed I.P." County Engineer's record also states "Raised 4-8-58". Did not find any bars or other objects directly above limestone. Used limestone as original position of section corner. Stood stone upright and placed 1/2" x 48" rebar with pink ribbon as memorial on West side of limestone, 8" lower than top of stone. Set 7/8" x 16" pipe with yellow plastic plug on top of limestone. Pipe is 6" deep and plug is embossed with 18149.
Reason for recording: Per Iowa Administrative Code 193C-12.2(2)b and c. Corner position differs from record and Corner monument has been modified.

N1/4 Corner Section 22 Twp. 96 Rng. 14 W.: Found 2" Aluminum cap on 3/4" rebar 6" below gravel road surface, per Public Land Survey Corner Certificate recorded in document 2005-1122 Office of Chickasaw County Recorder. Struck object below with tile probe.
Reason for recording: Per Iowa Administrative Code 193C-12.2(2)d. Measurement of tie North to "x" nails in corner post does not match record.



I hereby certify that this land surveying document was prepared and the related survey work was performed by me or under my direct personal supervision and that I am a duly LICENSED LAND SURVEYOR under the laws of the State of IOWA.

Duane F. Nie July 28, 2010 Date
Duane F. Nie License number 18149
My license renewal date is December 31, 2010

List Corners to be Indexed

| Corner | Section | Township | Range |
|-----------|---------|----------|-------|
| NW Cor. | 22 | 96 | 14 |
| N1/4 Cor. | 22 | 96 | 14 |

Section 15-96-14
As referred to in
Engr. Tie Book

2005-1122

Lee O. Gallentine LS, Ryken Engineering, 915 Seneca St., Webster City, IA 50595 - Ph. 515-832-1876 - Fax 515-832-1932

UNITED STATES PUBLIC LAND SURVEY CORNER CERTIFICATE

Land Survey Monuments situated in Section 22 15, Township 96 North, Range 14 West, of the Fifth Principal Meridian, Chickasaw County, Iowa,
Previously recorded in Not Applicable in County Recorder's Office

(Show reason for preparing this certificate, the evidence and detailed procedures used in establishing the corner positions and monumentation found or set.)

Monument Description and Remarks:

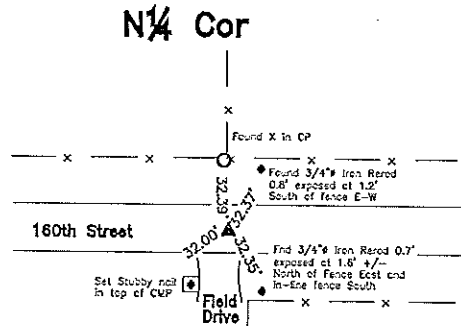
N¼ Cor - History of Corner - 1881, May 24, 25, 26 - 'Established...on... testimony... and placed a limestone 15 inches long and 7 inches wide and drove a stake on East side' by 'A.E. Quaffe Co Surveyor' per Co Engr's Survey Rec Bk 2 Pgs 313-314, 1994, 4-25 and 5-7 - 'Found Iron pin' per Co Rec's Bk 154 Pgs 408 and 464.
Current Co Engr's records indicate that corner is monumented with 'Iron Pin, Found Pin' in '1954' and '4-12-56' with ties as shown below.

Corner Recovery - Searched area with metal detector and found 80D iron spike on S side of 1"x24" square iron pin 0.3' deep (bent N). Tied out pin and spike, removed, and found 7" N-S x 11" E-W limestone with 2"x2" flat top 2.4' deep. During excavation, also found granite stone on W side of limestone at same depth as limestone and found wood hub remnants on E and S sides of limestone. Limestone is 1.0' +/- N of centerline of gravel road E-W, in-line with fence line N, and 1.0' +/- West of fence S. Limestone and hub found are deeper and older monuments, both match that of record, and record ties are within reason. Therefore, placed pink plastic cased magnet on N side of limestone below top for locating purposes only, set 3/4"x24" Alum capped iron rebar (#15745) stamped as shown below on center of top of limestone to raise up monumentation and used it as the correct corner. Rebar is 0.4' deep. All ties are plumb distance unless indicated otherwise. Location of pin and spike was S27°11'20"E 0.4' from that of center of stone. Did not reset pin or spike as to do so would conflict with the historical records on file in the Co Engr's Office.

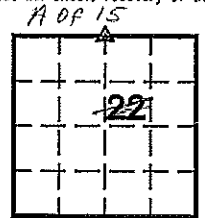
This certificate is being prepared because there are no certificates on file for this corner and this corner was used for a survey in this section for George L and Linda Ann Huegel and Elam Z. and Mabel M. Mortin.

Plan View

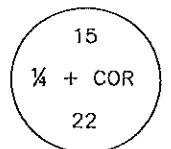
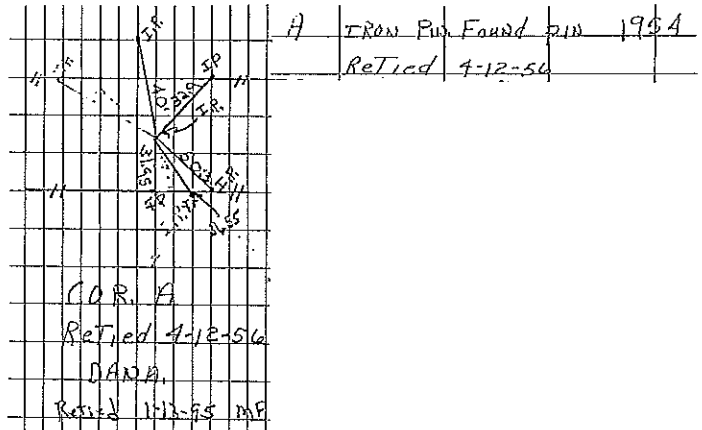
(Show a minimum of three reference ties to durable physical objects, relevant monuments, and physical conditions that will enable recovery of the corner.)



- Legend**
- BC = Nail w/ Bottle Cap
 - BP = Brace Post
 - CP = Corner Post
 - CM = 4" Sq Concrete Monument w/ 1/2" Iron rebar in center (tie to rebar)
 - CX = Cut
 - GP = Gate Post
 - GPW = Nail w/ Green Plastic Washer
 - PP = Power Pole
 - RH = Red Head (Nail in wire)
 - SFP = Steel Fence Post
 - RW = Nail w/ Reflective Round Washer
 - R/W = Iron ROW Nail
 - SM = Yellow Plastic Survey Marker
 - SW = Nail w/ Square Metal Washer
 - TP = Telephone Pedestal
 - TW = Nail w/ Round Metal Washer
 - WFP = Wood Fence Post
 - X = X Nails



CO ENGR'S RECORD TIES



Monument Detail

Cor A
15-96-14



I hereby certify that this land surveying document was prepared and the related survey work was performed by me or under my direct personal supervision and that I am a duly licensed Land Surveyor under the laws of the State of Iowa.

Lee O. Gallentine
LEE O. GALLENTINE, LS
Date: May 24, 2005 License number: 15745
My license renewal date is December 31, 2008

Pages or sheets covered by this seal: 1

List Corners to be Indexed

| Corners | Section | Twp | Range |
|---------|---------|------|-------|
| N¼ Cor | 22 | T96N | R14W |