



Prepared by: Erdman Engineering, P.C., 708 Commerce Drive, P.O. Box 246, Decorah, Iowa, (563)382-4194

UNITED STATES PUBLIC LAND SURVEY CORNER CERTIFICATE
 OF

Land Survey Monuments situated in Section 23, Township 96 North, Range 14 West, of the Fifth Principal Meridian, Chickasaw County, Iowa, Previously recorded in does not apply in the County Recorder's Office.

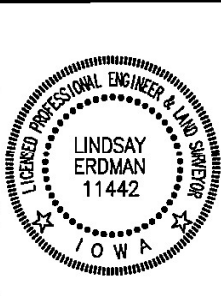
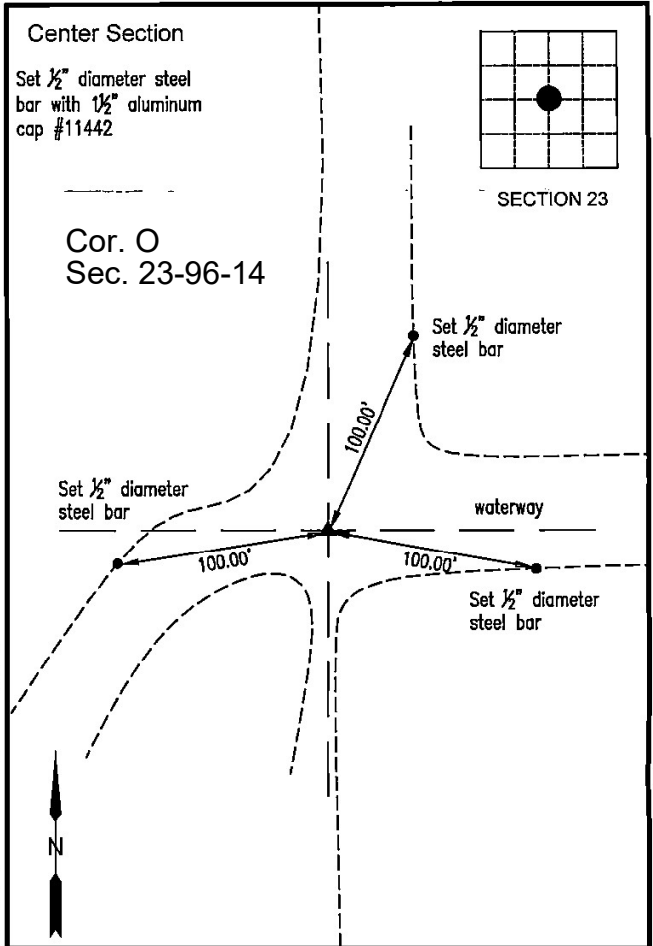
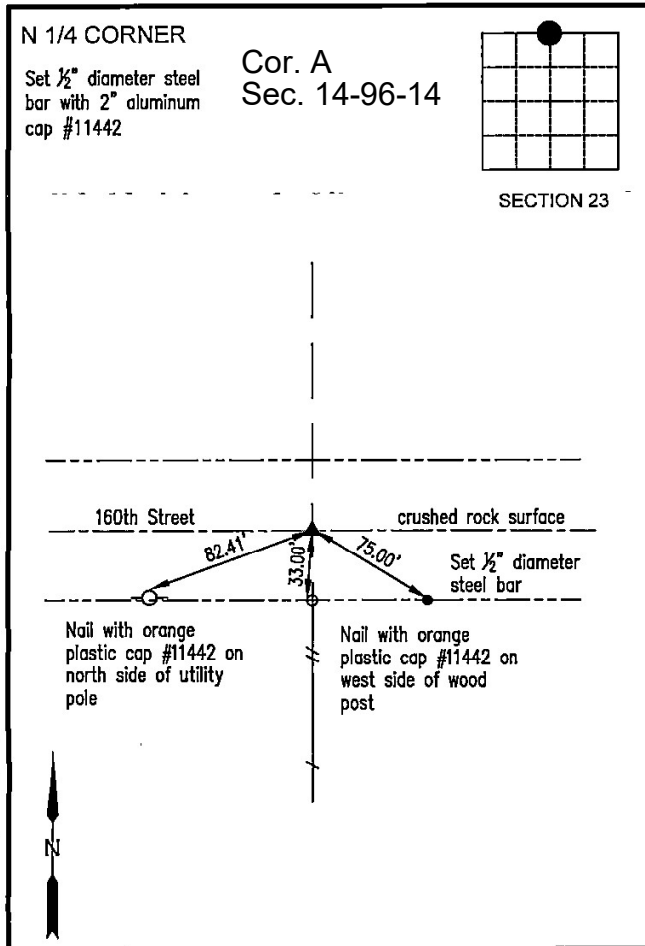
Monument Description and Remarks:

This certificate is prepared in accordance with Section 355.11 of the Code of Iowa. No previous certificates have been filed for these corner locations.

N 1/4 Corner: We found no record of the N 1/4 Corner being set. We found no evidence of a monument in the field other than the county road and the existing fence line running south. We set a 1/2" diameter steel bar with 2" aluminum cap #11442 in line with the fence line running south and at the center of the 66' wide county road right-of-way as the N 1/4 Corner of Section 23, Township 96 North, Range 14 West.

Center Section: We found no record of the Center of Section 23 being set. We found no evidence of a monument in the field other than the existing fence line running north and east. We found the W 1/4 Corner, E 1/4 Corner and S 1/4 Corner. We set the N 1/4 Corner. We set a 1/2" diameter steel bar with 1 1/2" aluminum cap #11442 at the intersection of the line from the W 1/4 Corner to the E 1/4 Corner and the N 1/4 Corner and the extension of the existing fence line running north and south as the Center of Section 23, Township 96 North, Range 14 West.

PLAN-VIEW
 (NOT TO SCALE)



I hereby certify that this land surveying document was prepared and the related survey work was performed by me or under my direct personal supervision and that I am a duly licensed Land Surveyor under the laws of the State of Iowa.

Lindsay Erdman 2/1/24
 Date
 Lindsay Erdman, P.E. & P.L.S.
 Licensed Professional Land Surveyor
 Iowa License Number 11442
 My License renewal date is December 31, 2024
 Pages or sheets covered by this seal: THIS SHEET ONLY

List Corner(s) to be Indexed

Corner(s)	Section	Township	Range
N 1/4	23	96N	14W
CS	23	96N	14W

ERDMAN ENGINEERING, P.C.
 CIVIL ENGINEERING & LAND SURVEYING
 Decorah, Iowa