

UNITED STATES PUBLIC LAND SURVEY CORNER CERTIFICATE

OF
Land Survey Monuments situated in Section 24, Township 96 NORTH, Range 14 WEST, of the Fifth Principal Meridian, CHICKASAW County, Iowa. Previously recorded in (NONE) in County Recorder's Office.

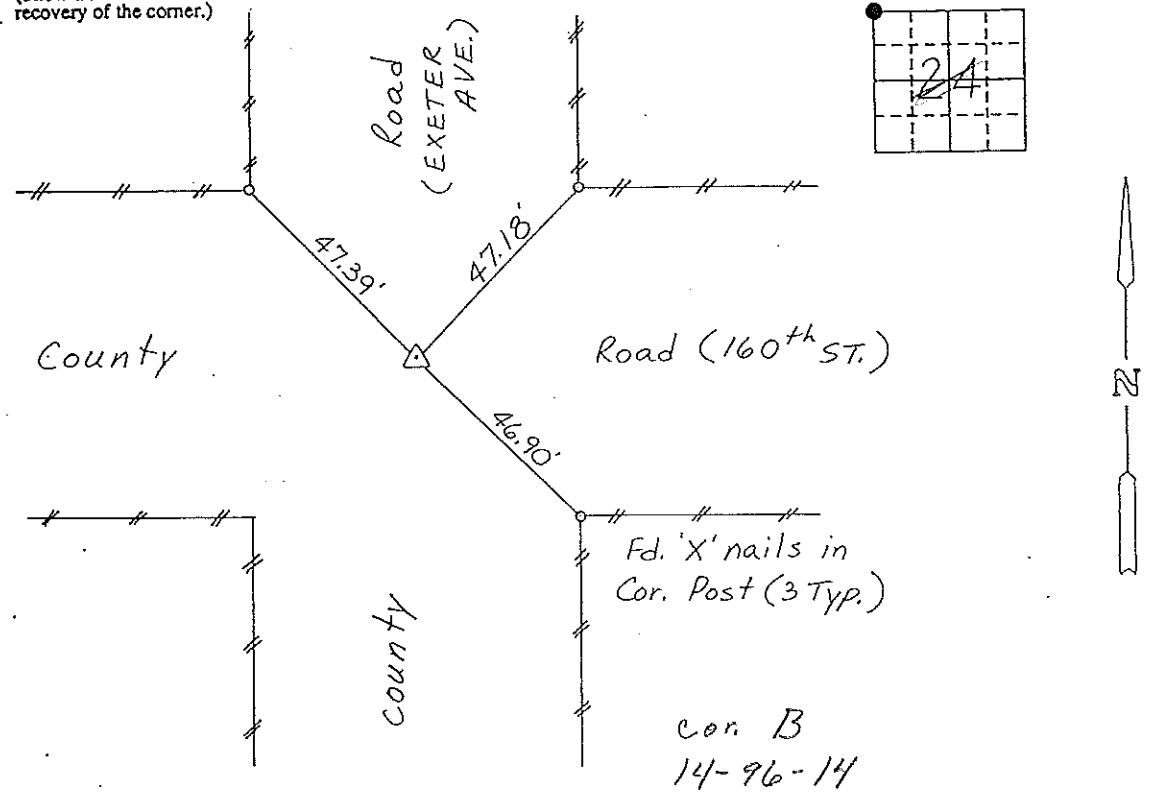
(Show reason for preparing this certificate, the evidence and detailed procedures used in establishing the corner positions and monumentation found or placed.)
Monument Description and Remarks: NW CORNER, SECTION 24-T96N-R14W:

FOUND 5/8" φ REBAR WITH CAP.

Section 14-96-14
is referred to in
Engl. Tie Book.

PLAN - VIEW

(Show a minimum of three reference ties to durable physical objects, relevant monuments and physical conditions that will enable recovery of the corner.)



NW CORNER, SECTION 24-T96N-R14W

I hereby certify that the survey work was completed and this certificate was prepared by me or under my direct personal supervision and that I am a duly registered land surveyor under the laws of the state of Iowa.

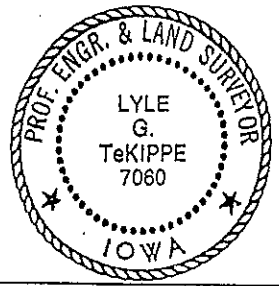
Signature: Lyle G. TeKippe
Name typed or printed: Lyle G. TeKippe

Date: 12-16-92 Reg. No. 7060
My Registration Expires December 31, 1992

Corners	List Section	Twps	Range
NW	24	96N	14W

Cor B 14-96-14
Placed in Tie Book
12/28/92

SEAL



151-44

"County Engineer's Copy"

Project _____

Sheet No. _____ of _____



Job No. _____

Calc's for _____

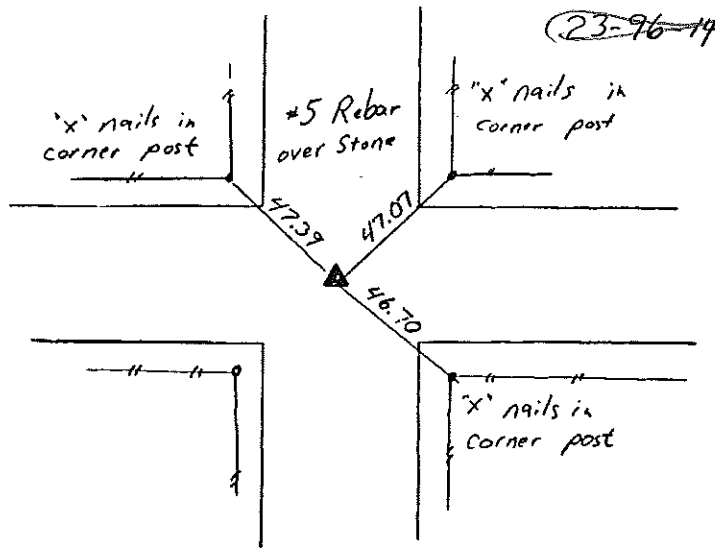
CONSULTING ENGINEERS

By _____ Date _____

4250 Glass Rd. N.E., P.O. Box 9009
Cedar Rapids, Iowa 52409
Phone 319/395-7805

Checked _____ Date _____

NE COR

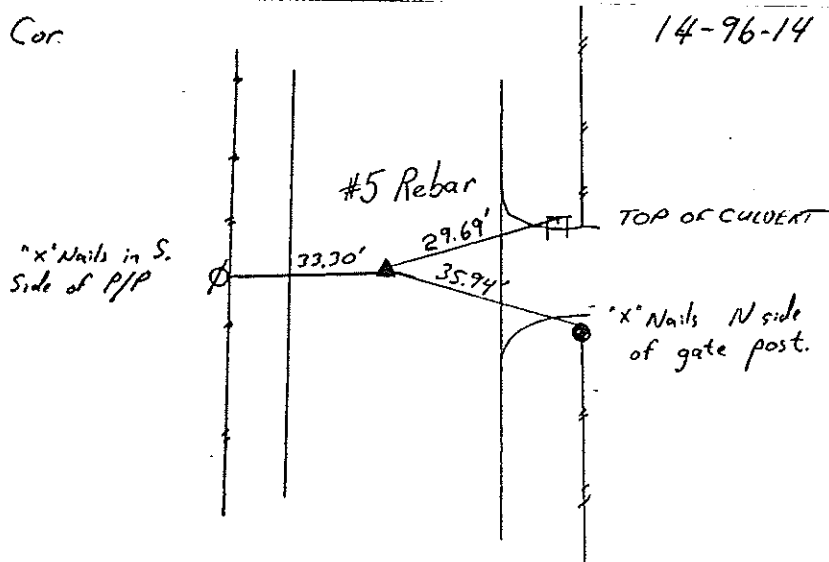


~~23-96-14~~

CORNER "B" OF
14-96-14

12/89
Entered
New ties
in Tie Book

E 1/4 Cor



14-96-14

CORNER "C" OF
14-96-14