



Prepared by: Erdman Engineering, P.C., 708 Commerce Drive ,P.O. Box 246, Decorah, Iowa, (563)382-4194

UNITED STATES PUBLIC LAND SURVEY CORNER CERTIFICATE
 OF

Land Survey Monuments situated in Section 23, Township 96 North, Range 14 West, of
 the Fifth Principal Meridian, Chickasaw County, Iowa, Previously recorded in does not apply in the
 County Recorder's Office.

Monument Description and Remarks:

This certificate is prepared in accordance with Section 355.11 of the Code of Iowa. No previous certificates have been filed for these corner locations.

WNW 1/8 Corner: We found no record of the WNW 1/8 Corner being set. We found no evidence of a monument in the field other than the county road. We found the NW Corner and the W 1/4 Corner. We set a 1/2" diameter steel bar with 2" aluminum cap #11442 on line and midway between the NW Corner and the W 1/4 Corner as the WNW 1/8 Corner of Section 23, Township 96 North, Range 14 West.

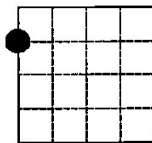
N 1/8 Corner: We found no record of the N 1/8 Corner being set. We found no evidence of a monument in the field other than the farming occupation line. We set the N 1/4 Corner and the Center Section. We set a 1/2" diameter steel bar with 1 1/2" aluminum cap #11442 on line and midway between the N 1/4 Corner and the Center Section as the N 1/8 Corner of Section 23, Township 96 North, Range 14 West.

PLAN-VIEW
 (NOT TO SCALE)

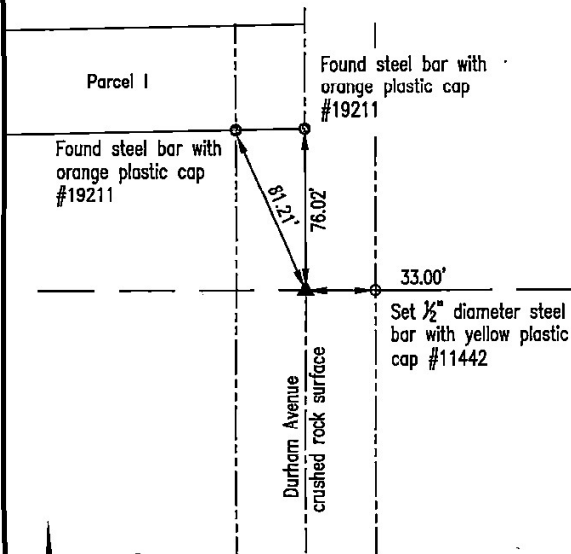
WNW 1/8 CORNER

Set 1/2" diameter steel
 bar with 2" aluminum
 cap #11442

Cor. C1
 Sec. 22-96-14



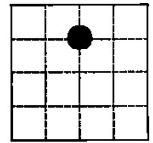
SECTION 23



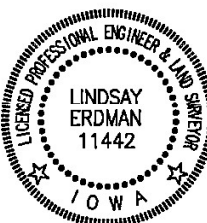
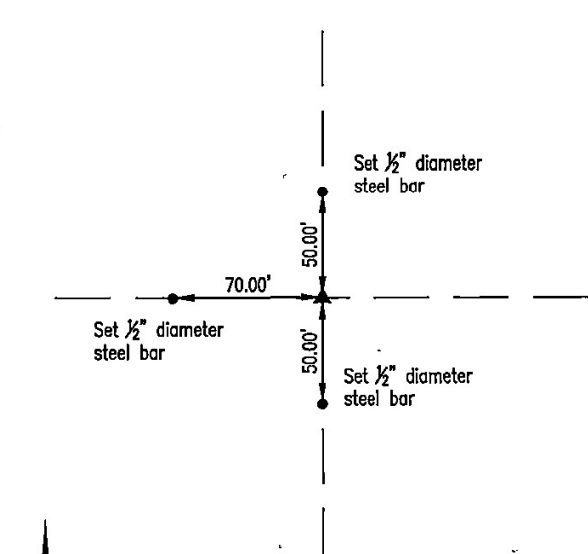
N 1/8 CORNER

Set 1/2" diameter steel
 bar with 1 1/2" aluminum
 cap #11442

Cor. Y
 Sec. 23-96-14



SECTION 23



I hereby certify that this land surveying document was prepared and the related survey work was performed by me or under my direct personal supervision and that I am a duly licensed Land Surveyor under the laws of the State of Iowa.

Lindsay Erdman 2/1/24
 Date

Lindsay Erdman, P.E. & P.L.S.
 Licensed Professional Land Surveyor
 Iowa License Number 11442
 My License renewal date is December 31, 2024
 Pages or sheets covered by this seal: THIS SHEET ONLY

List Corner(s) to be Indexed

Corner(s)	Section	Township	Range
WNW 1/8	23	96N	14W
N 1/8	23	96N	14W

ERDMAN
ENGINEERING, P.C.
 CIVIL ENGINEERING & LAND SURVEYING
 Decorah, Iowa