



Prepared by & Return to: Harold - Reicks Surveying, 10 East Main Street, New Hampton, IA 50659, Ph. 641-394-2725

### United States Public Land Survey Corner Certificate

Land Survey Monument situated in  
 Section 24, Township 96 North, Range 14 West of the Fifth Principal Meridian, Chickasaw County, Iowa.  
 On file in Document #2019-0322 in the County Recorder's office.

This certificate is being prepared in compliance with Iowa Code Chapter 355.11 because:

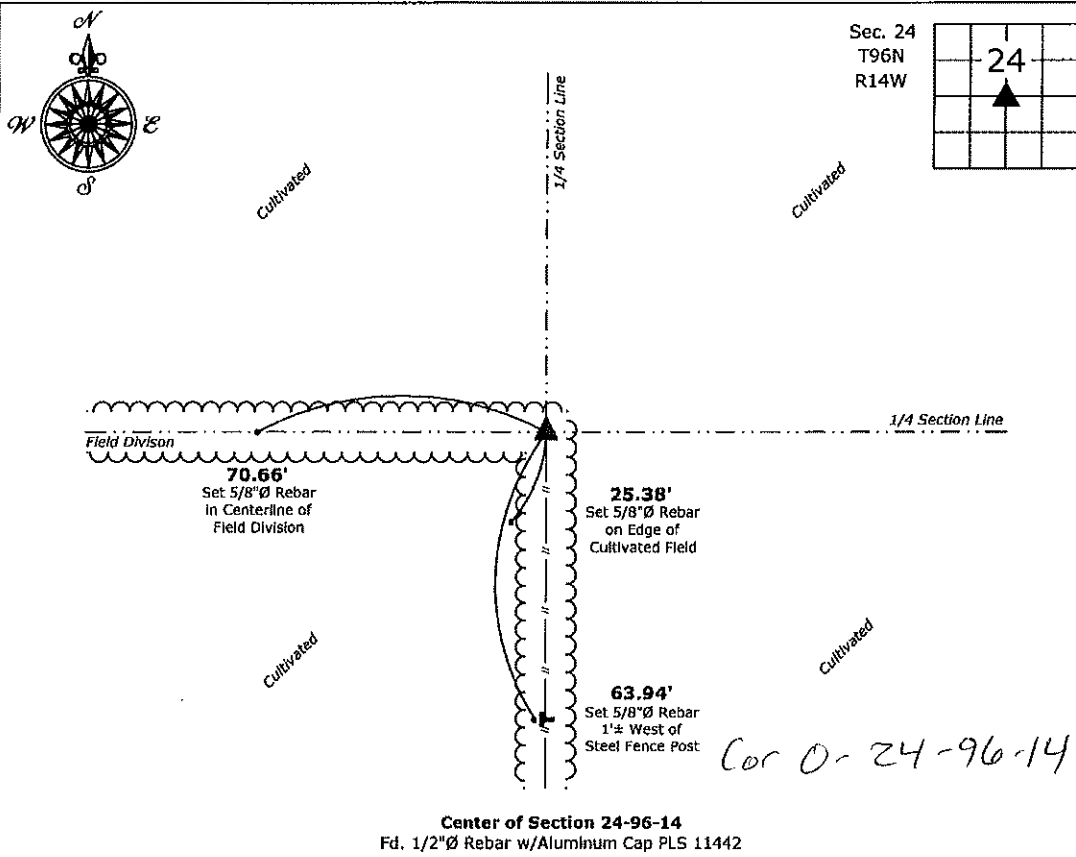
- There is no certificate on file for this corner.
- There are no longer three valid ties of record.
- There are changes to reference ties of record.
- There is change of monumentation of record.
- To clarify description of record monument (ties).

**Monument Description and Remarks:**

**Center of Section:** Found 1/2"Ø Rebar with Aluminum Cap PLS 11442 with information obtained from the previously recorded Section Corner Certificate, but could not locate previous reference ties. Set 3 new ties to update the corner.

### Plan View

(Show a minimum of three reference ties to durable physical objects, relevant monuments and physical conditions that will enable recovery of the corner.)



**Center of Section 24-96-14**  
 Fd. 1/2"Ø Rebar w/Aluminum Cap PLS 11442



I hereby certify that this land surveying document was prepared and the related survey work was performed by me or under my direct personal supervision and that I am a duly licensed Land Surveyor under the laws of the State of Iowa.  
*Kirk D. Reicks* 6-19-2020  
 Kirk D. Reicks Date:  
 License number 19211  
 My license renewal date is December 31, 2020.  
 Sheets covered by this seal: Individual sheet only

List Corner to be Indexed			
Corner	Section	Twp.	Range
CTR	24	96	14
Project Number: 2020-065			
FB: Chickasaw 10, Pgs. 21			

File: S:\\_Projects - NHO\Chickasaw\CHICK-19\CHICK-19 - 2020.dwg, 6/19/2020 5:06:53 AM



Prepared by: Erdman Engineering, P.C., 708 Commerce Drive, P.O. Box 246, Decorah, Iowa, (563)382-4194

UNITED STATES PUBLIC LAND SURVEY CORNER CERTIFICATE  
 OF

Land Survey Monuments situated in Section 24, Township 96 North, Range 14 West, of  
 the Fifth Principal Meridian, Chickasaw County, Iowa, Previously recorded in does not apply in the  
 County Recorder's Office.

Monument Description and Remarks:

This certificate is prepared in accordance with Section 355.11 of the Code of Iowa. No previous certificates have been filed for these corner locations.

**Center Section:** We found no record of the Center of Section 24 being set. We found no evidence of a monument in the field other than an existing fence corner with fence lines running south and west. We found the W 1/4 Corner, E 1/4 Corner, N 1/4 Corner and the S 1/4 Corner. We computed the location of the Center Section at the intersection of the opposite quarter corners. This location was approximately in line with the fence running south and ±6' north of the fence running west. We used the existing fence corner as the Center of Section 24, Township 96 North, Range 14 West. We set a 1/2" diameter steel bar with 1 1/2" aluminum cap #11442 on the north side of the post.

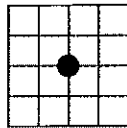
**N 1/8 Corner:** We found no record of the N 1/8 Corner being set. We found no evidence of a monument in the field other than an existing fence corner with a fence line running east and west. We found the N 1/4 Corner and the set the Center Section. We computed the location of the N 1/8 Corner on line and midway between the N 1/4 and the Center Section. This location was approximately ±2' north of the fence line running east and west. We set a 1/2" diameter steel bar with 1 1/2" aluminum cap #11442 on line between the N 1/4 Corner and the Center Section and in the east-west fence line as the N 1/8 Corner of Section 24, Township 96 North, Range 14 West.

PLAN-VIEW

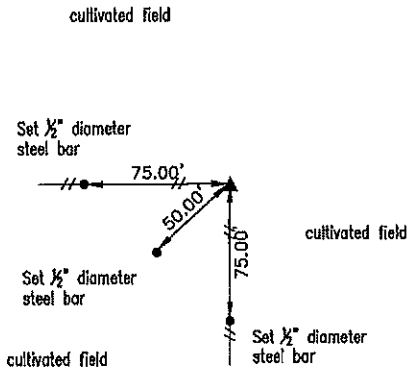
(NOT TO SCALE)

Center Section

Existing fence corner.  
 Set 1/2" diameter steel  
 bar with 1 1/2" aluminum  
 cap #11442 on north  
 side of the post.



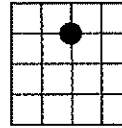
SECTION 24



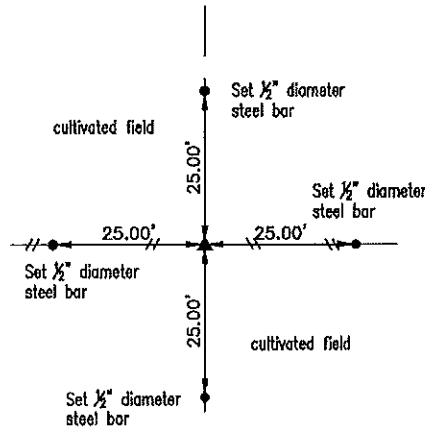
Cor O  
 24-96-14

N 1/8 CORNER

Set 1/2" diameter steel  
 bar with 1 1/2" aluminum  
 cap #11442



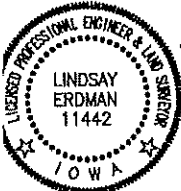
SECTION 24



Cor Y  
 24-96-14

I hereby certify that this land surveying document was prepared and the related survey work was performed by me or under my direct personal supervision and that I am a duly licensed Land Surveyor under the laws of the State of Iowa.

*Lindsay Erdman* 3/18/19  
 Date  
 Lindsay Erdman, P.E. & P.L.S.  
 Licensed Professional Land Surveyor  
 Iowa License Number 11442  
 My License renewal date is December 31, 2020  
 Pages or sheets covered by this seal: THIS SHEET ONLY



List Corner(s) to be Indexed

Corner(s)	Section	Township	Range
C.S.	24	96N	14W
N 1/8	24	96N	14W

**ERDMAN**  
**ENGINEERING, P.C.**  
 CIVIL ENGINEERING & LAND SURVEYING  
 Decorah, Iowa