

UNITED STATES PUBLIC LAND SURVEY CORNER CERTIFICATE

OF

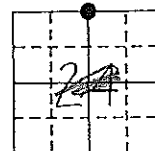
Land Survey Monuments situated in Section 24, Township 96 NORTH, Range 14 WEST, of the Fifth Principal Meridian, CHICKASAW County, Iowa. Previously recorded in (NONE) in County Recorder's Office.

(Show reason for preparing this certificate, the evidence and detailed procedures used in establishing the corner positions and monumentation found or placed.)

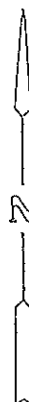
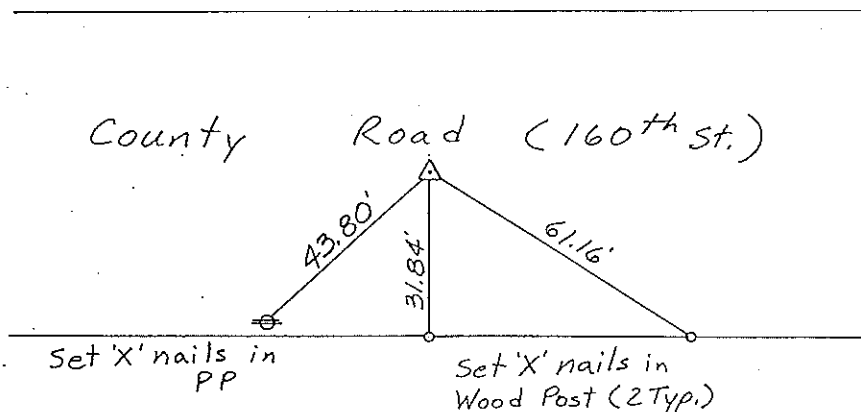
Monument Description and Remarks: N 1/4 CORNER, SECTION 24-T96N-R14W:
SET 1/2" Ø REBAR WITH CAP FROM RECORDS.

PLAN - VIEW

(Show a minimum of three reference ties to durable physical objects, relevant monuments and physical conditions that will enable recovery of the corner.)



Section 13-96-14
As referred to in
Engr. Tie Book



Cor. A
13-96-14

N 1/4 CORNER, SECTION 24-T96N-R14W

I hereby certify that the survey work was completed and this certificate was prepared by me or under my direct personal supervision and that I am a duly registered land surveyor under the laws of the state of Iowa.

Signature: Lyle G. TeKippe
Name typed or printed: Lyle G. TeKippe

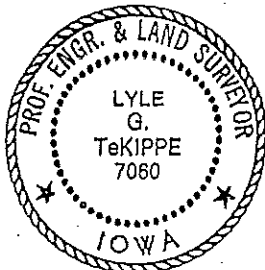
Date: 12-16-92 Reg. No. 7060

My Registration Expires December 31, 1992

Corners	List Corners to be Indexed Section	Twp	Range
N 1/4	24	96N	14W

Cor A 13-96-14
Placed in tie Book
12/28/92

SEAL



151-45

"County Engineer's Copy"