

Chickasaw Co. Recorder  
 Cindy Messersmith  
 Fee Book 2016-1363  
 10/11/2016 @ 03:37 PM  
 SCC: SEC COR CERT  
 BOOK: Page: # Pages: 1  
 Total Fees: \$7.00

PREPARED BY: North Star Land Surveyors LLC, 107 Pine Street, New Hampton, IA 50659, Phone: 641-330-6948

## UNITED STATES PUBLIC LAND CORNER CERTIFICATE

### OF:

Land Survey Monuments situated in Section 13, Township 96 North, Range 14 West of the Fifth Principal Meridian, CHICKASAW County, Iowa. Previously recorded in 2003-3818 AND 161-160 in Office of County Recorder.  
(book, page, document number, etc.)

#### Monument Description and Remarks:

SSE 1/8: FOUND 1/2" REBAR WITH 1/2" ALUMINUM CAP 3" DEEP PER CERTIFICATE RECORDED IN DOCUMENT 2003-3818. COUNTY SURVEYOR'S RECORD (OFFICE OF COUNTY ENGINEER) INDICATES A STONE. PROBED AROUND REBAR TO DEPTH OF 3 TO 3 1/2 FEET. DID NOT HIT STONE.

REASON FOR RECORDING: ALL TIES MISSING EXCEPT NAIL & CAP NORTH AND 1/2" REBAR NW.

SE CORNER: FOUND 1/2" REBAR WITH BLUE RIBBON AND REMENANT OF YELLOW PLASTIC CAP. PER CERTIFICATE RECORDED IN BOOK 161, PAGE 160, CHICKASAW COUNTY RECORDER. FOUND REBAR WAS 2" DEEP. PROBED BELOW 1/2" REBAR. HIT HARD OBJECT AT 21" DEEP.

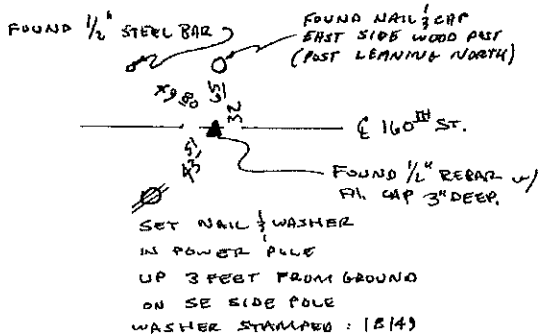
REASON FOR RECORDING: ALL TIES MISSING EXCEPT FOUND PIPE SW.

NOTE: WORK PERFORMED FOR SURVEY RECORDED IN DOCUMENT 2016-1222 (COUNTY RECORDER)

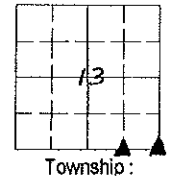
### PLAN-VIEW



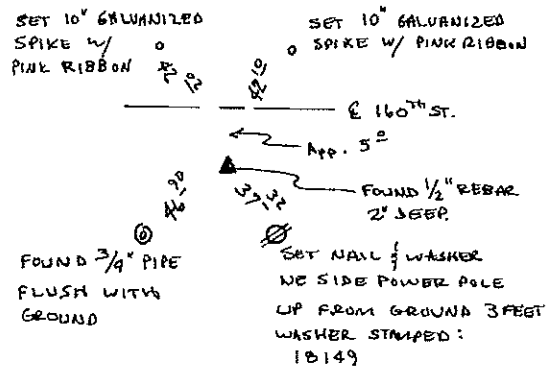
#### SSE 1/8 CORNER



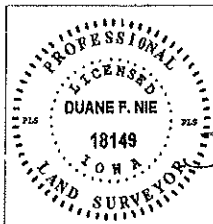
Cor A<sub>1</sub>



#### SE CORNER



Cor B



I hereby certify that this land surveying document was prepared and the related survey work was performed by me or under my direct personal supervision and that I am a duly Licensed Land Surveyor under the laws of the State of IOWA.

Duane F. Nie October 10, 2016 Date  
 Duane F. Nie License number 18149  
 My license renewal date is December 31, 2016  
 Pages or sheets covered by this seal. This sheet only

#### List Corners to be Indexed

Corner	Section	Township	Range
SSE 1/8 cor.	13	96	14
SE cor.	13	96	14

Project: 19139414 STEVEN

Dec 21.00  
2003 DEC 31 AM 9 19

CINDY MESSERSMITH  
COUNTY RECORDER

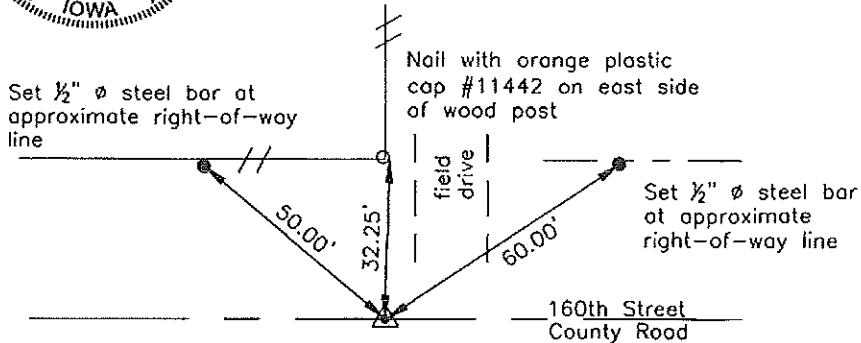
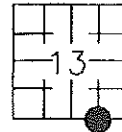
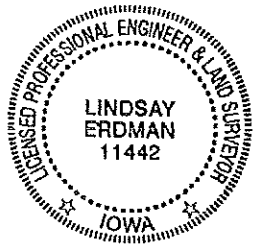
Prepared by: Erdman Engineering, P.C., 708 Commerce Drive, P.O. Box 246, Decorah, Iowa 52101 (563) 382-4194

United States Public Land Survey Corner Certificate  
of

Land Survey Monuments situated in Section 13, Township 96, Range 14 West of  
the 5th Principal Meridian in Chickasaw County, Iowa. Previously recorded in  
does not apply in the county Recorder's Office.

Monument Description and Remarks: This certificate is prepared in accordance with  
Section 193C of the Code of Iowa. No previous certificate has been filed for this  
corner location. We found no record of the SSE 1/8 Corner being set. We found no  
evidence of a monument in the field other than the centerline of the county road and  
a fence line running north. We found the SE corner and the S 1/4 Corner. From these  
monuments we set a 1/2" diameter steel bar with 1 1/2" aluminum cap #11442 on line  
and equidistant between the S 1/4 Corner and the SE Corner as the SSE 1/8 Corner of  
Section 13-T96N-R14W.

Plan-View



Cor A1

I hereby certify that the survey work was completed  
and this certificate was prepared by me or under my  
direct supervision and that I am a duly registered  
land surveyor under the laws of the State of Iowa.

Signature Lindsay Erdman  
Lindsay Erdman, P.E. and P.L.S. Iowa License Number 11442

Date: 12/23/03

My license renewal date is December 31, 2004

Corner(s) to be Indexed

Corner	Section	Township	Range
SSE 1/8	13	96	14