

UNITED STATES PUBLIC LAND SURVEY CORNER CERTIFICATE

OF

Land Survey Monuments situated in Section 25, Township 96 North, Range 14 West, of the Fifth Principal Meridian, CHICKASAW County, Iowa. Previously recorded in NONE in County Recorder's Office.
(book, page, document number, etc.)

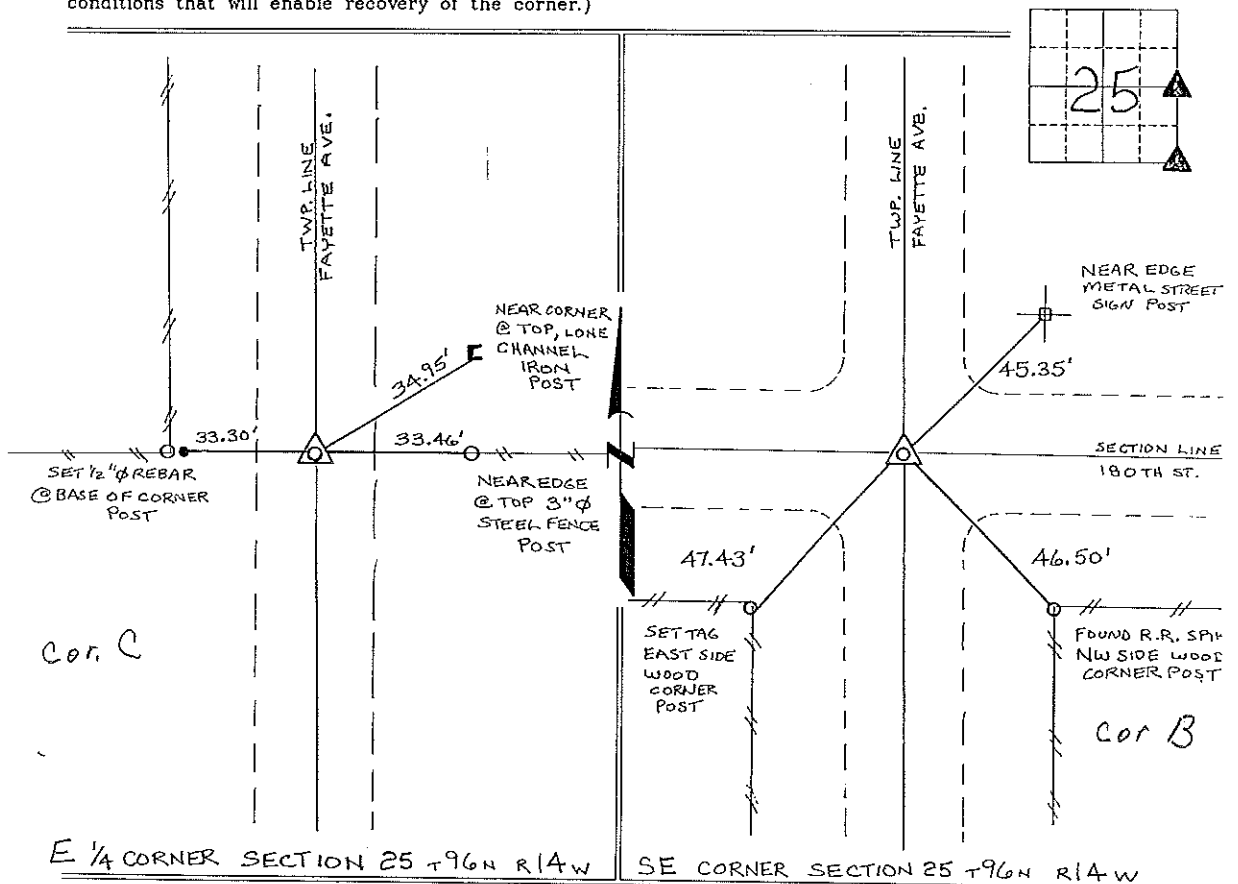
(Show reason for preparing this certificate, the evidence and detailed procedures used in establishing the corner positions and monumentation found or placed.)

Monument Description and Remarks: E 1/4 CORNER SECTION 25 T96N R14W: FOUND 1/2" SQUARE-TWISTED IRON BAR, FROM INFORMATION OBTAINED FROM THE COUNTY ENGINEERS OFFICE.

SE CORNER SECTION 25 T96N R14W: SET 1/2" φ REBAR w/CAP 7060, FROM INFORMATION OBTAINED FROM THE COUNTY ENGINEERS OFFICE.

PLAN - VIEW

(Show a minimum of three reference ties to durable physical objects, relevant monuments and physical conditions that will enable recovery of the corner.)



E 1/4 CORNER SECTION 25 T96N R14W

SE CORNER SECTION 25 T96N R14W



I hereby certify that this land surveying document was prepared and the related survey work was performed by me or under my direct personal supervision and that I am a duly licensed Land Surveyor under the laws of the State of Iowa.
Lyle G. TeKippe 9-19-97
 Lyle G. TeKippe Date
 License number 7060
 My license renewal date is December 31, 1998.
 Sheets covered by this seal: Individual

List Corners to be Indexed			
Corners	Section	Twp.	Range
E 1/4	25	96N	14W
Cor C	25-96-14		
SE	25	96N	14W
Corner B	25-96-14		

Placed in this book
 9/25/97 JFM

165-192

"County Engineer's Copy"