

Section 23-96-14
As referred to in
Engr. Tie Book

STEVE BUSSE P.O. BOX 241 508 ELM STREET ALLISON, IOWA 50602 319-267-2519

UNITED STATES PUBLIC LAND SURVEY CORNER CERTIFICATE

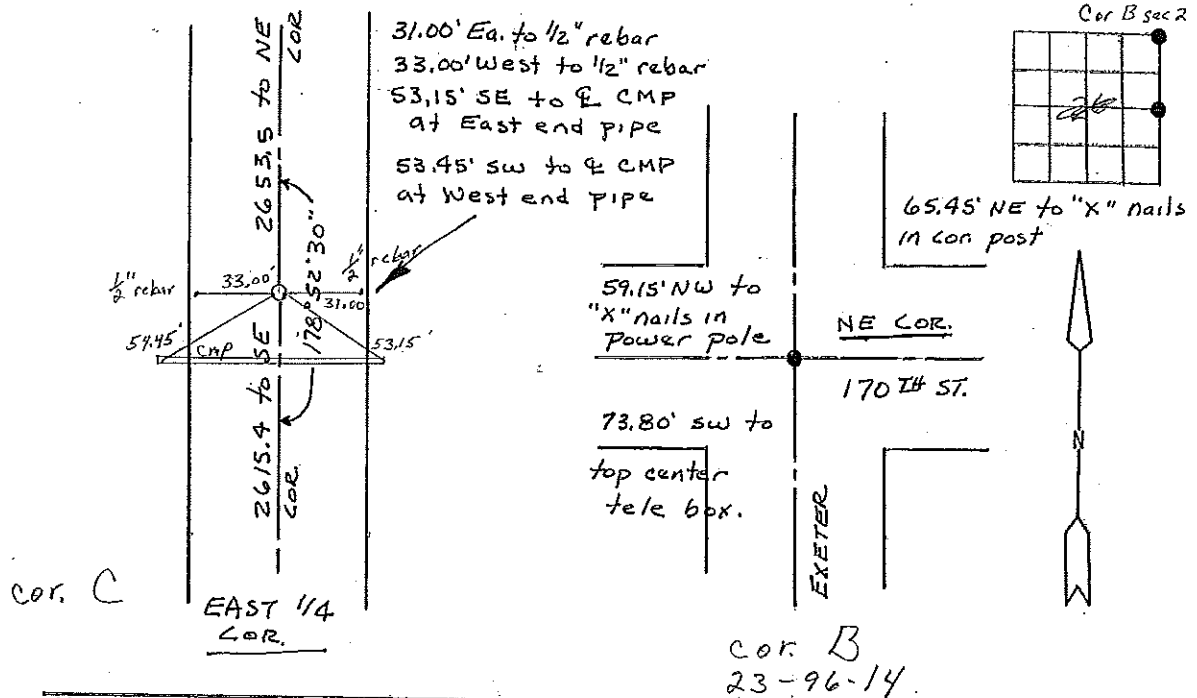
Land Survey Monuments situated in Section 26, Township 96 North, Range 14 West, of the Fifth Principal Meridian, Chickasaw County, Iowa.

Previously recorded in N/A in County Recorder's Office.
(book, page, document number, etc.)

(Show reason for preparing this certificate, the evidence and detailed procedures used in establishing the corner positions and monumentation found or placed.)

Monument Description and Remarks: Found iron pin 20" deep. Based with 1/2" rebar/cap at NE cor. section. Set 1/2" rebar/cap at East 1/4 con. Dug at several locations but found nothing. Used dim. of 39.5 chs. for east line SE 1/4 and 40.08 chs for East line NE 1/4 obtained from County Engineers office. and prorated this to measurements taken. This fit with extension of old fence line to west in section **PLAN - VIEW 26**. Also fit right of way lines

(Show a minimum of three reference ties to durable physical objects, relevant monuments and physical conditions that will enable recovery of the corner)



I hereby certify that the survey work was completed and this land surveying document was prepared by me or under my direct personal supervision and that I am a duly licensed land surveyor under the laws of the state of Iowa

Signature: Steve Busse
Name typed or printed: STEVE BUSSE

Date: 11/7/01 Reg. No. 2018

My license renewal date is December 31, 2002

SEAL

Corners	List Corners to be Indexed		
	Section	Twp	Range
E 1/4 COR.	26	96	14
NE COR.	26	96	14

Filed 10 Dec. 01