

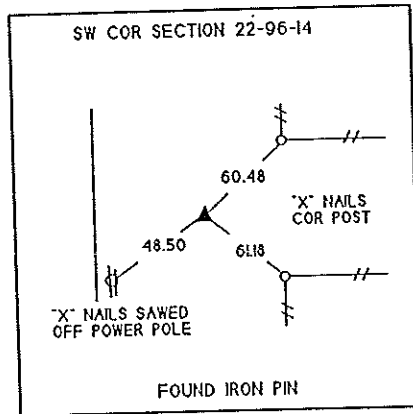
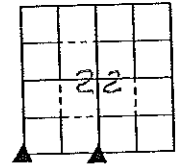
UNITED STATES PUBLIC LAND SURVEY CORNER CERTIFICATE OF

LAND SURVEY MONUMENTS SITUATED IN SECTION 22 . TOWNSHIP 96N. RANGE 14W. OF THE 5th PRINCIPAL MERIDIAN
CHICKASAW COUNTY, IOWA PREVIOUSLY RECORDED IN (NOT APPLICABLE) IN COUNTY RECORDER'S OFFICE.

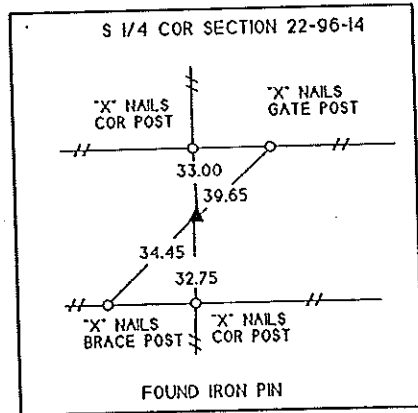
MONUMENT DESCRIPTION AND REMARKS: _____

 SW CORNER - FOUND IRON PIN FROM COUNTY TIES
 S 1/4 CORNER - FOUND IRON PIN FROM COUNTY TIES

PLAN VIEW



Cor. B



Cor. A



I HEREBY CERTIFY THAT THE SURVEY WORK WAS COMPLETED AND THIS CERTIFICATE WAS PREPARED BY ME OR UNDER MY DIRECT PERSONAL SUPERVISION AND THAT I AM A DULY REGISTERED LAND SURVEYOR UNDER THE LAWS OF THE STATE OF IOWA.

SIGNATURE: *Kenneth D. Stark*
 NAME TYPED OR PRINTED: KENNETH D. STARK
 DATE: 04-30-94 REG. NO. 10898

SEAL



LIST OF CORNERS TO BE INDEXED

CORNERS	SECTION	TWP	RANGE
SW COR	22	96	14
S 1/4 COR	22	96	14

Cor B Section 21-96-14
Cor A Section 22-96-14

Place in file
Book 8/12/94

DOCUMENT No. 02218 FILED FOR RECORD THE 7th DAY OF May STATE OF IOWA, CHICKASAW COUNTY.
 RECORDING FEE \$ 5.00 19 92 AT 11:49 O'CLOCK A.M. BOOK 149 PAGE 337 By Mary C. Murray Recorder
 TRANSFER FEE \$ - MARY C. MURRAY Deputy

UNITED STATES PUBLIC LAND SURVEY CORNER CERTIFICATE

OF

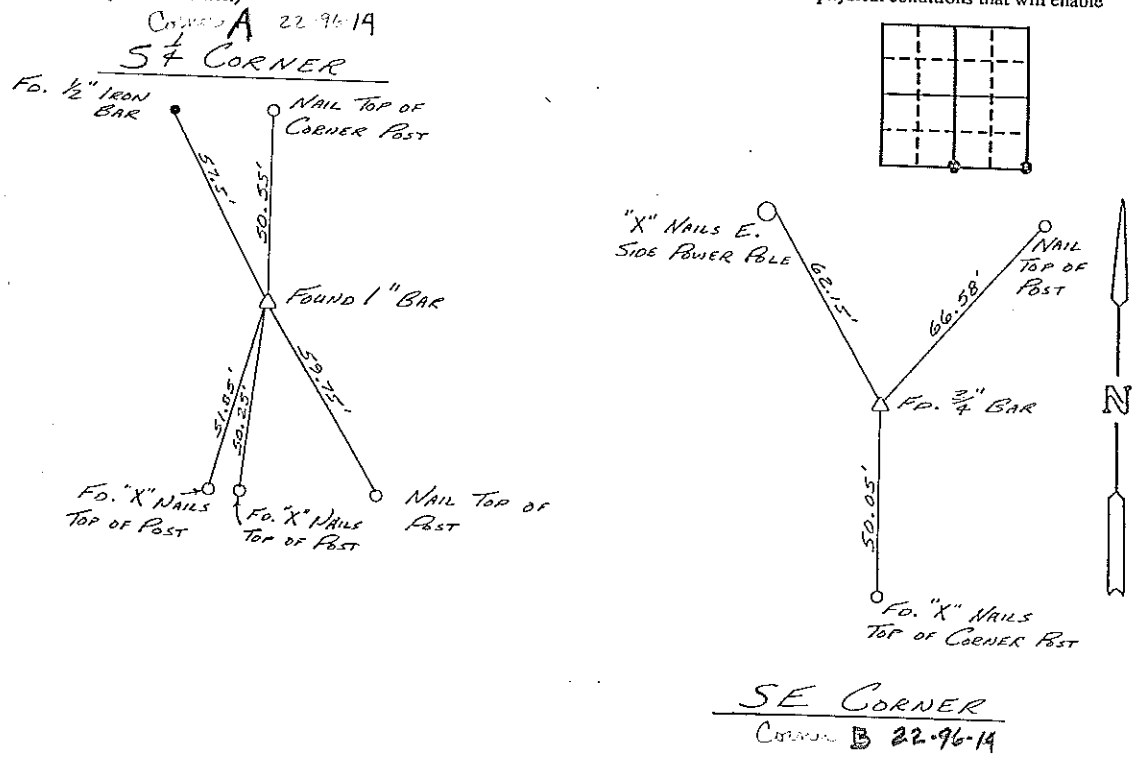
Land Survey Monuments situated in Section 22, Township 96, Range 14,
 of the Fifth Principal Meridian, CHICKASAW County, Iowa.
 Previously recorded in DOES NOT APPLY in County Recorder's Office.
(book, page, document number, etc.)

(Show reason for preparing this certificate, the evidence and detailed procedures used in establishing the corner positions and monumentation found or placed.)

Monument Description and Remarks:

PLAN - VIEW

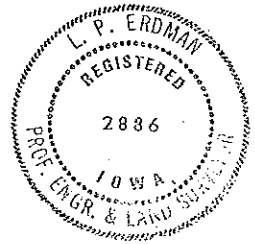
(Show a minimum of three reference ties to durable physical objects, relevant monuments and physical conditions that will enable recovery of the corner.)



I hereby certify that the survey work was completed and this certificate was prepared by me or under my direct personal supervision and that I am a duly registered land surveyor under the laws of the state of Iowa.
 Signature: L. P. Erdman
 Name typed or printed: L. P. ERDMAN
 Date: 4-21-92 Reg. No. 2886

Comers	List Corners to be Indexed Section	Twp	Range
S4	22	96	14
SE	22	96	14

Placed in the Book 1992 May



SEAL