

2005-1124

UNITED STATES PUBLIC LAND SURVEY CORNER CERTIFICATE

OF

Land Survey Monuments situated in Section 22, Township 96 North, Range 14 West, of the Fifth Principal Meridian, Chickasaw County, Iowa,
 Previously recorded in Bk 149 Pg 337 in County Recorder's Office

(Show reason for preparing this certificate, the evidence and detailed procedures used in establishing the corner positions and monumentation found or set.)

Monument Description and Remarks:

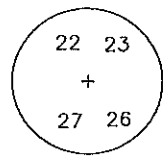
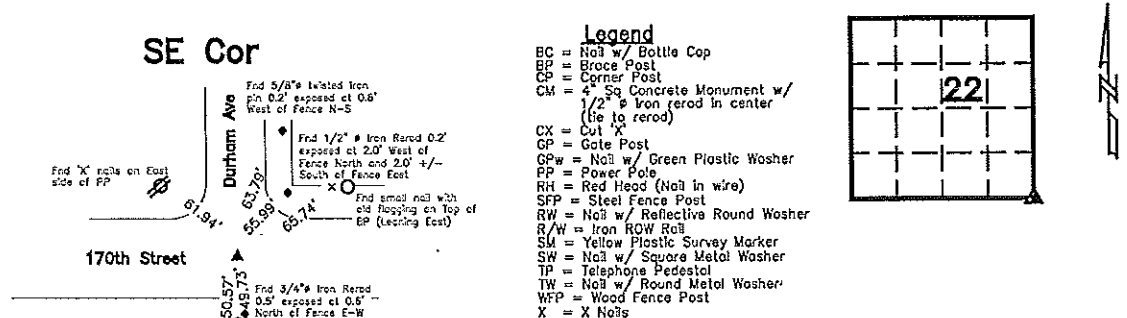
SE Cor - History of Corner - 1883, April 10th - "set said Cor where he said was about the place he had seen the Gov. Mound and pit and stake" by G.W. Cohert, Co Surveyor per Co Engr's Survey Rec Bk 2 Pg 335
 1992, "Found 3/4" Bar" per Co Rec's Bk 149 Pg 337 and Bk 151 Pg 371.
 Current Co Engr's records indicate that corner is monumented with Limestone Iron pin 1928. Found Limestone and placed Iron Pin. Found I.P. that was placed on IP that was bent over stone. Removed both pin and set one directly over high point of stone" and "retied 8-3-56" with ties as shown below.

Corner Recovery - Searched area with metal detector and fnd 3/4"Ø x 1.9' Iron Rerod 0.3' deep over 5/8"Ø x 1.8' twisted iron pin 2.3' deep. Tied out rerod and pin, removed, and fnd 8" E-W x 10" N-S domed topped limestone 3.9' deep. Limestone is 1.0' +/- W of centerline gravel road N, 3.0' +/- N of centerline of gravel road E-W, and 1.0' +/- E of fence line S. Stone found is deeper and older monument, stone found matches that of record, and both pin and rerod appear to have not been placed "directly over high point of stone". Therefore, placed pink plastic cased magnet on N side of stone below high point for locating purposes only, set 3/4"Ø x 3.5' Alum Capped Iron Rerod (#15745) stamped as shown below on high point of stone to raise up monumentation and used it as the correct corner. Rerod is 0.4' deep. All ties are plumb distance unless indicated otherwise. Location of pin and rerod was S41°46'00"W 0.9' from that of high point of stone. Did not reset pin or rerod as to do so would conflict with the historical records on file in the Co Engr's Office.

This certificate is being prepared because there is a change to monumentation of record, a position different than that of record was used, and this corner was used for a survey in this section for George L and Linda Ann Huegel and Elam Z. and Mabel M. Martin

Plan View

(Show a minimum of three reference ties to durable physical objects, relevant monuments, and physical conditions that will enable recovery of the corner.)

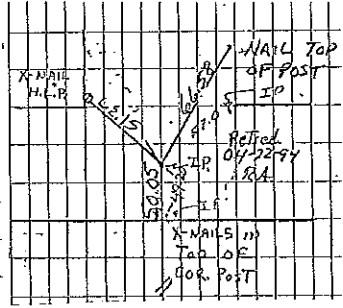


Monument Detail

Cor. B

Limestone			
Iron Pin	1928	Found	Limestone
Placed	Iron Pin		
Found	I.P. that was placed	on I.P.	
	that was bent	over stone	
	Removed both pins	set one directly	
	over high point	of stone	Retied 8-3-56

CO ENGR'S RECORD TIES



I hereby certify that this land surveying document was prepared and the related survey work was performed by me or under my direct personal supervision and that I am a duly licensed Land Surveyor under the laws of the State of Iowa.

Lee O. Gallentine PLS

LEE O. GALLENTINE, LS
 Date: May 20, 2005 License number: 15745
 My license renewal date is December 31, 2006

Pages or sheets covered by this seat 1

List Corners to be Indexed

Corners	Section	Twp	Range
SE Cor	22	T96N	R14W

DOCUMENT No. 02218 FILED FOR RECORD THE 7th DAY OF May STATE OF IOWA, CHICKASAW COUNTY.
 RECORDING FEE \$ 5.00 19 92 AT 11:49 O'CLOCK A.M. BOOK 149 PAGE 337
 TRANSFER FEE \$ - By Mary C. Murray Recorder
 MARY C. MURRAY Deputy

UNITED STATES PUBLIC LAND SURVEY CORNER CERTIFICATE

OF

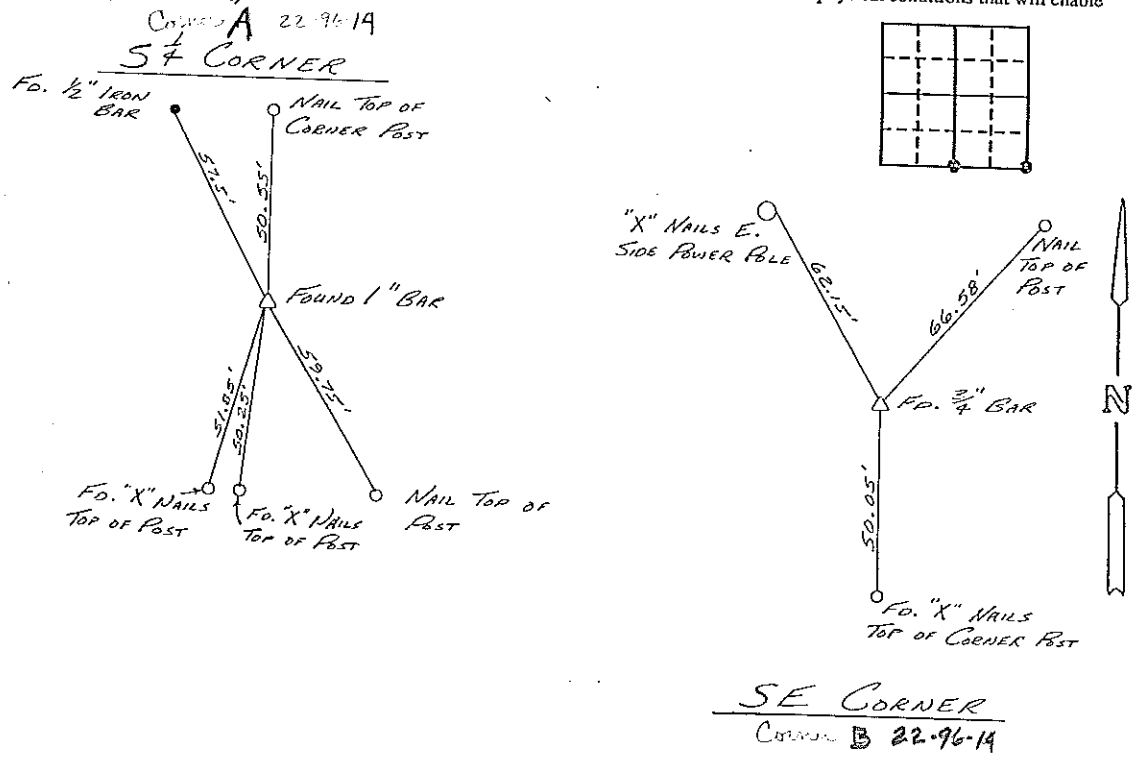
Land Survey Monuments situated in Section 22, Township 96, Range 14,
 of the Fifth Principal Meridian, CHICKASAW County, Iowa.
 Previously recorded in DOES NOT APPLY in County Recorder's Office.
(book, page, document number, etc.)

(Show reason for preparing this certificate, the evidence and detailed procedures used in establishing the corner positions and monumentation found or placed.)

Monument Description and Remarks:

PLAN - VIEW

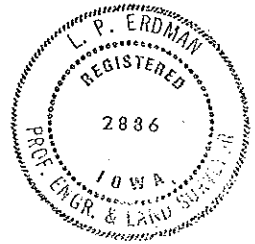
(Show a minimum of three reference ties to durable physical objects, relevant monuments and physical conditions that will enable recovery of the corner.)



I hereby certify that the survey work was completed and this certificate was prepared by me or under my direct personal supervision and that I am a duly registered land surveyor under the laws of the state of Iowa.
 Signature: L. P. Erdman
 Name typed or printed: L. P. ERDMAN
 Date: 4-21-92 Reg. No. 2886

Corners	List Corners to be Indexed		
	Section	Twp	Range
5/4	22	96	14
SE	22	96	14

Placed in the book 1992 May



SEAL