

Section 20-96-14
As referred to in
Engr. Tie Book

Chickasaw Co. Recorder
Cindy Messersmith
Fee Book 2008-1864

09/26/2008 @1019AM
SCC SEC COR CERT # Pages: 1
Book: Page: \$7.00
Total Fees:

STEVE BUSSE P.O. BOX 241 508 ELM ST. ALLISON, IOWA 50602 319-267-2519

UNITED STATES PUBLIC LAND SURVEY CORNER CERTIFICATE OF

LAND SURVEY MONUMENTS SITUATED IN SECTION NO. 28, TOWNSHIP NO. 96 NORTH, RANGE
NO. 14 WEST OF THE FIFTH PRINCIPAL MERIDIAN, CHICKASAW COUNTY, IOWA.
PREVIOUSLY RECORDED IN N/A

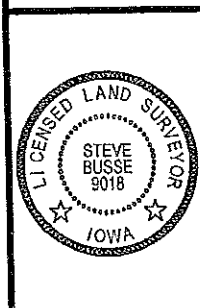
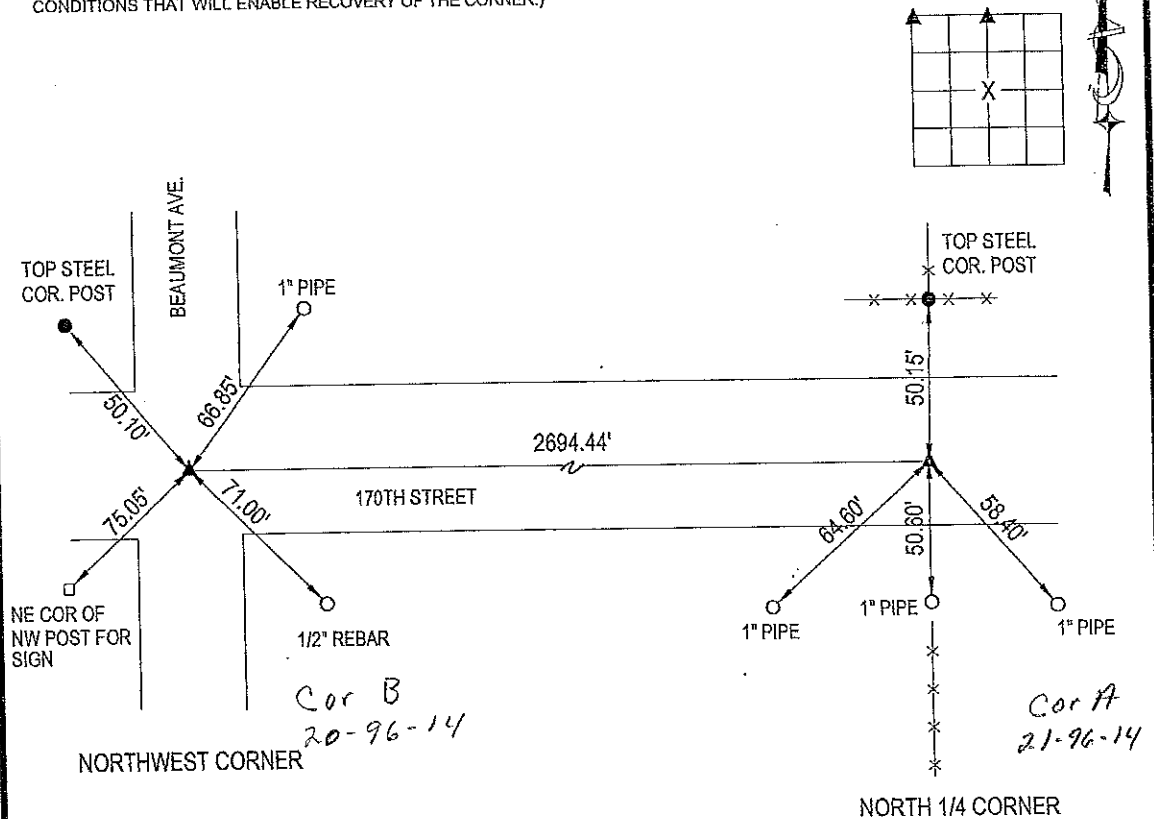
(SHOW REASON FOR PREPARING THIS CERTIFICATE, THE EVIDENCE AND DETAILED PROCEDURES USED IN ESTABLISHING THE
CORNER POSITIONS AND MONUMENTATION FOUND OR PLACED.)

MONUMENT DESCRIPTION AND REMARKS:

FOUND NO CERTIFICATE ON FILE FOR EITHER CORNER. FOUND 3/4" IRON PIN AT NORTH 1/4 CORNER.
PIN ON FENCE LINE NORTH AND SOUTH. COUNTY TIES CALL FOR I.P. FOUND PIN 6" DEEP. AT
NORTHWEST CORNER FOUND 5/8" REBAR IN CENTER OF INTERSECTION. COUNTY TIES DO NOT CALL
OUT TYPE OF MONUMENTATION. BOTH CORNERS FOUND FIT TIES FROM COUNTY WITHIN REASON.
USED CORNERS IN SURVEY FOR SUMMIT FARMS IN SECTION 28.

PLAN VIEW

(SHOW A MINIMUM OF THREE REFERENCE TIES TO DURABLE PHYSICAL OBJECTS, RELEVANT MONUMENTS AND PHYSICAL
CONDITIONS THAT WILL ENABLE RECOVERY OF THE CORNER.)



I HEREBY CERTIFY THAT THIS LAND SURVEYING DOCUMENT
WAS PREPARED AND THE RELATED SURVEY WORK WAS
PERFORMED BY ME OR UNDER MY DIRECT PERSONAL
SUPERVISION AND THAT I AM A DULY LICENSED LAND
SURVEYOR UNDER THE LAWS OF THE STATE OF IOWA.

Steve Busse 9/24/08
STEVE BUSSE DATE

LICENSE NUMBER 9018
MY LICENSE RENEWAL DATE IS DECEMBER 31, 2008
PAGES OR SHEETS COVERED BY THIS SEAL 1

G.P. = 2" GAS PIPE
CONC MONU = CONCRETE MONUMENT W/ PIN & ALUM CAP
"X NAILS" = CROSS NAILS IN WOOD POST
OPT = PLASTIC TAG (O=ORANGE, Y=YELLOW)
(00) RECORDED AS

LIST CORNERS TO BE INDEXED			
CORNER	SECTION	TOWNSHIP	RANGE
NORTHWEST COR.	28	96	14
NORTH 1/4 COR.	28	96	14