

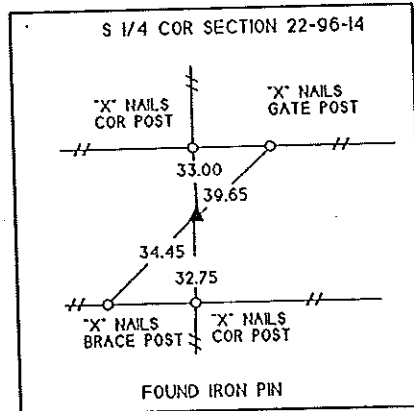
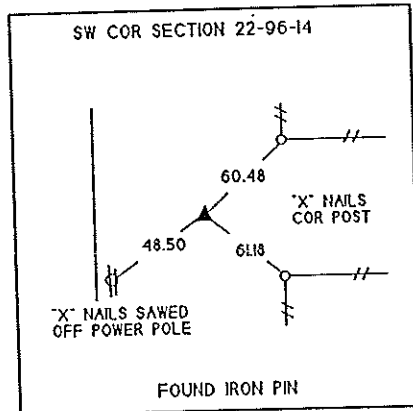
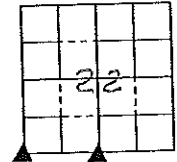
UNITED STATES PUBLIC LAND SURVEY CORNER CERTIFICATE OF

LAND SURVEY MONUMENTS SITUATED IN SECTION 22 . TOWNSHIP 96N. RANGE 14W. OF THE 5th PRINCIPAL MERIDIAN
CHICKASAW COUNTY, IOWA PREVIOUSLY RECORDED IN (NOT APPLICABLE) IN COUNTY RECORDER'S OFFICE.

MONUMENT DESCRIPTION AND REMARKS: _____

SW CORNER - FOUND IRON PIN FROM COUNTY TIES
S 1/4 CORNER - FOUND IRON PIN FROM COUNTY TIES

PLAN VIEW



Cor. B

Cor. A

I HEREBY CERTIFY THAT THE SURVEY WORK WAS COMPLETED AND THIS CERTIFICATE WAS PREPARED BY ME OR UNDER MY DIRECT PERSONAL SUPERVISION AND THAT I AM A DULY REGISTERED LAND SURVEYOR UNDER THE LAWS OF THE STATE OF IOWA.

SIGNATURE: *Kenneth D. Stark*
 NAME TYPED OR PRINTED: KENNETH D. STARK
 DATE: 04-30-94 REG. NO. 10898



SEAL

LIST OF CORNERS TO BE INDEXED

CORNERS	SECTION	TWP	RANGE
SW COR	22	96	14
S 1/4 COR	22	96	14

Cor. B Section 21-96-14
 Cor. A Section 22-96-14

Place in file
Book 8/12/94