

Instrument #: 2021-1418  
 06/23/2021 10:42:03 AM Total Pages: 1  
 SCC SECTION CORNER CERTIFICATES  
 Recording Fee: \$ 7.00  
 Shirley Troyna, Recorder, Chickasaw County Iowa

Reserved for Court

Kyle J. Helland, 6109 Chancellor Drive, Cedar Falls, Iowa 50613-6916, (319)-266-0161

## UNITED STATES PUBLIC LAND SURVEY CORNER CERTIFICATE OF

LAND SURVEY MONUMENTS SITUATED IN SECTION NO. 29 TOWNSHIP NO. 96 NORTH, RANGE  
 NO. 14 WEST OF THE FIFTH PRINCIPAL MERIDIAN, CHICKASAW COUNTY, IOWA.  
 PREVIOUSLY RECORDED IN FEE BOOK #2008-1864.

(SHOW REASON FOR PREPARING THIS CERTIFICATE, THE EVIDENCE AND DETAILED PROCEDURES USED IN ESTABLISHING THE CORNER POSITIONS AND MONUMENTATION FOUND OR PLACED.)

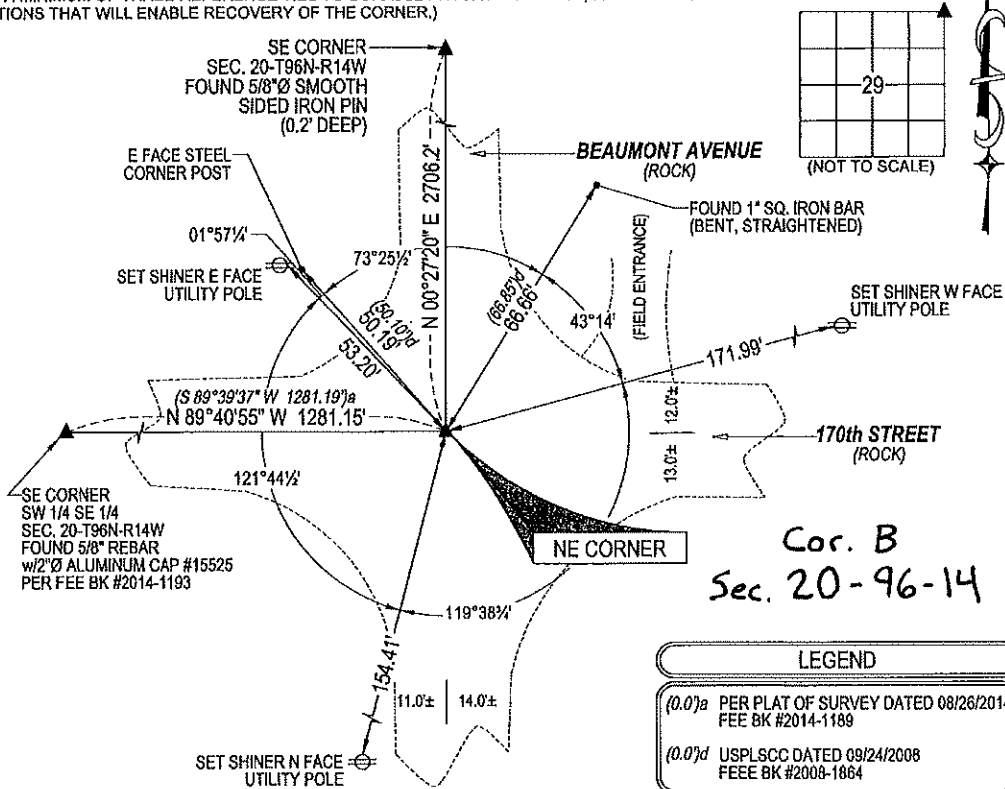
**MONUMENT DESCRIPTION AND REMARKS:**

ONLY TWO REFERENCE TIES REMAIN. SURVEY COMPLETED IN THE SE 1/4 OF SEC. 20-T96N-R14W.

→ **NE CORNER:** CHICKASAW COUNTY ENGINEER REFERENCE TIES DATED 05/31/1962 & 06/18/1962 CALLS FOR [IRON PIN & HUB FOUND RETIED 6-1-53 RAISED 4-7-1958 FOND I.P. & RETIED 6-18-62]. PLAT OF SURVEY BOOK 120 PAGE 76 DATED 08/19/1979 CALLS FOR [PIPE W/CAP SET]. PLAT OF SURVEY FEE BK #2014-1189 DATED 08/26/2014 CALLS FOR [FD. 5/8"Ø REBAR]. USPLSCC FEE BK #2008-1864 DATED 09/24/2008 CALLS FOR [FOUND 5/8" REBAR IN CENTER OF INTERSECTION. COUNTY TIES DO NOT CALL OUT TYPE OF MONUMENTATION.]. SEARCHED AREA WITH MAGNETIC DETECTOR, FOUND 5/8"Ø SMOOTH SIDED IRON PIN (0.3"± DEEP). UTILIZED SAID IRON PIN AS CORNER.

### PLAN VIEW

(SHOW A MINIMUM OF THREE REFERENCE TIES TO DURABLE PHYSICAL OBJECTS, RELEVANT MONUMENTS AND PHYSICAL CONDITIONS THAT WILL ENABLE RECOVERY OF THE CORNER.)



(BEARINGS ARE ASSUMED)



**HELLAND ENGINEERING & SURVEYING, LTD.**  
 6109 Chancellor Drive  
 Cedar Falls, Iowa 50613-6916  
 (319)-266-0161

BRASS TAG = 4d. NAIL & 13/16"Ø BRASS TAG DRAWN BY: CDR  
 SHINER = 1"Ø STEEL SHINER w/MASONRY NAIL  
 OPC = PLASTIC CAP (O=ORANGE, R=RED, Y=YELLOW)  
 (00) RECORDED AS FILE NAME: 21-168-23.DWG



I hereby certify that this land surveying document was prepared and the related survey work was performed by me or under my direct personal supervision and that I am a duly licensed Professional Land Surveyor under the laws of the State of Iowa.  
*Kyle J. Helland*  
 Kyle J. Helland  
 License Number 23212  
 My license renewal date is December 31, 2021.  
 All pages or sheets are covered by this seal except:

LIST CORNERS TO BE INDEXED			
CORNER	SECTION	TOWNSHIP	RANGE
NE CORNER	29	96N	14W
SE CORNER	20	96N	14W
SW CORNER	21	96N	14W
NW CORNER	28	96N	14W