

DOCUMENT No. 1501 FILED FOR RECORD THE 29th DAY OF August 2000 AT 9:45 STATE OF IOWA, CHICKASAW COUNTY:
 RECORDING FEE \$ 6.00 BY Cindy Meser-Smith Recorder
 TRANSFER FEE \$ _____ O'CLOCK A M. BOOK 2000 PAGE 1501 BY Shirley M. Wagner Deputy

STEVE BUSSE P.O. BOX 241 508 ELM STREET ALLISON, IOWA 50802 319-267-2519

UNITED STATES PUBLIC LAND SURVEY CORNER CERTIFICATE

Land Survey Monuments situated in Section 1, Township 96 North, Range 14 West, of the Fifth Principal Meridian, Chickasaw County, Iowa.

Previously recorded in N/A In County Recorder's Office.
 (book, page, document number, etc.)

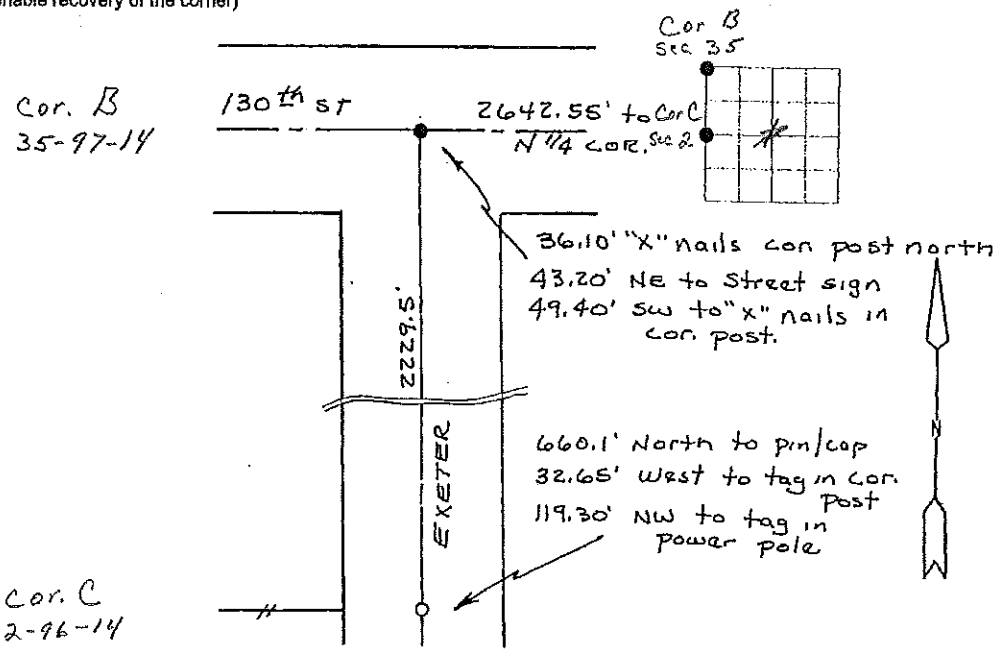
(Show reason for preparing this certificate, the evidence and detailed procedures used in establishing the corner positions and monumentation found or placed.)

Monument Description and Remarks: Found 5/8" rebar with yellow cap (could not read number on cap) at NW COR. SECTION. SET 1/2" rebar at West 1/4 COR. Dug for stone but found NOTHING. Set pin at split of ROW fences and 2229.5' south of NW COR section. This was from Co. Engineers ties. This corner 660.1' south of East west fence and on fence line to west.

PLAN - VIEW

(Show a minimum of three reference ties to durable physical objects, relevant monuments and physical conditions that will enable recovery of the corner)

*Section 2-96-14
 AS referred to in
 Engr. Tie Book.*



I hereby certify that the survey work was completed and this land surveying document was prepared by me or under my direct personal supervision and that I am a duly licensed land surveyor under the laws of the state of Iowa

Signature: Steve Busse
 Name typed or printed: STEVE BUSSE

Date: 8/29/00 Reg. No. 9018
 My license renewal date is December 31, 2000

SEAL

Comers	Section	Twp	Range
NW COR	1	96	14
W 1/4 COR	1	96	14