

UNITED STATES PUBLIC LAND SURVEY CORNER CERTIFICATE

OF

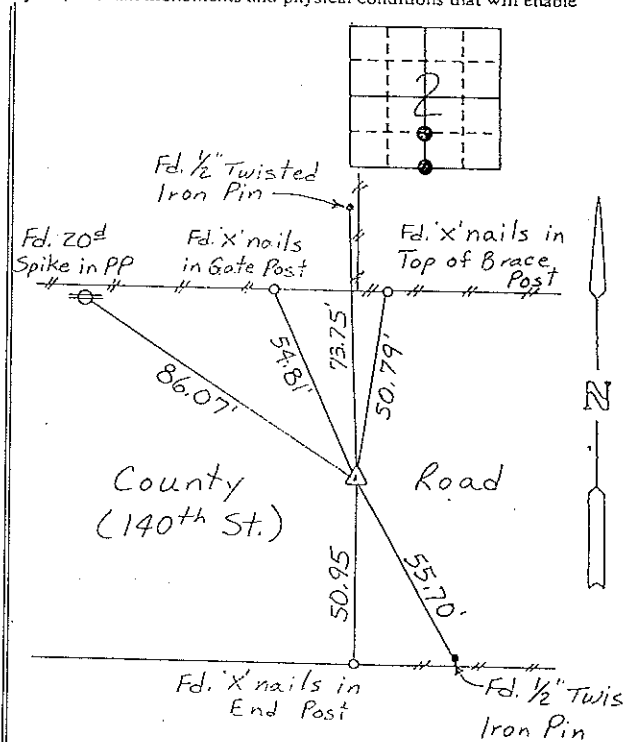
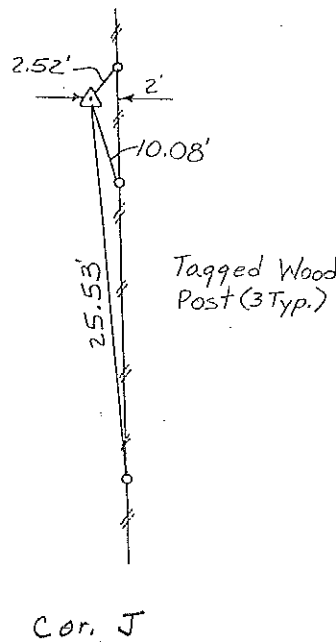
Land Survey Monuments situated in Section 2, Township 96 NORTH, Range 14 WEST, of the Fifth Principal Meridian, CHICKASAW County, Iowa. Previously recorded in NONE in County Recorder's Office.

(book, page, document number, etc.)  
(Show reason for preparing this certificate, the evidence and detailed procedures used in establishing the corner positions and monumentation found or placed.)

Monument Description and Remarks: NW CORNER, SW 1/4 - SE 1/4 SECTION 2-T96N-R14W:  
Found 1/2" Rebar with cap # 7060.  
S 1/4 CORNER, SECTION 2-T96N-R14W: Found PK Nail.

PLAN - VIEW

(Show a minimum of three reference ties to durable physical objects, relevant monuments and physical conditions that will enable recovery of the corner.)



NW CORNER  
SW 1/4 - SE 1/4 SECTION 2-T96N-R14W

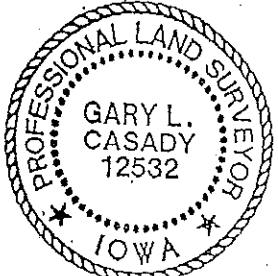
S 1/4 CORNER, SECTION 2-T96N-R14W

I hereby certify that the survey work was completed and this certificate was prepared by me or under my direct personal supervision and that I am a duly registered land surveyor under the laws of the state of Iowa.

Signature: Gary L. Casady  
Name typed or printed: Gary L. Casady

Date: 6-18-93 Reg. No. 12532  
My Registration Expires December 31, 1994

Corners	List Corners to be Indexed	Section	Twp	Range
NW Cor.	SW 1/4 - SE 1/4	2	96N	14W
S 1/4	COR-A	2	96N	14W



SEAL

Placed in the Book 6/18/93