

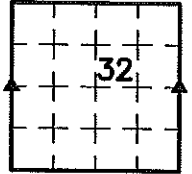
2011-2011

Zeb J. Stanbrough PLS, Ryken Engineering, 711 Park Avenue, Ackley, Iowa 50801 - Ph. 641-847-3273 - Fax 641-847-2303

**UNITED STATES PUBLIC LAND SURVEY CORNER CERTIFICATE**

OF 31

Land Survey Monuments situated in Section 32, Township 96 North, Range 14 West, of the Fifth Principal Meridian, Chlcckasaw County, Iowa, Previously recorded in Not Applicable in County Recorder's Office



These corners were used for a survey in this section for Summit Farms, LLC and RTS Farms, LLC. Basis of bearing for this corner cert. can be found on the associated plot of survey filed in the Co. Rec's Office for this section.

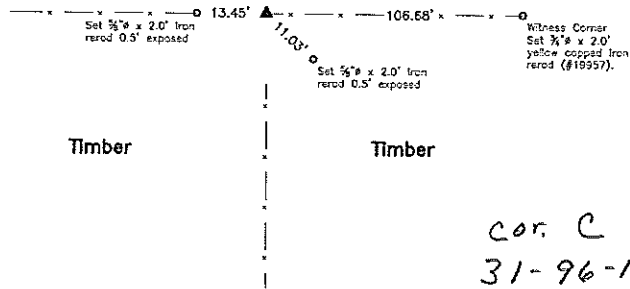
**Legend**

- BC = Nail with Bottle Cap
- BP = Brace Post
- CP = Corner Post
- CMP = Corrugated Metal Pipe
- CM = 4" Sq Concrete Monument with
- 1/2" Iron rod in center (tie to rerod)
- CX = Cut 'X'
- GP = Gate Post
- ID = Inside Diameter
- OD = Outside Diameter
- PP = Power Pole
- PW = Nail with Plastic Washer
- RCP = Reinforced Concrete Pipe
- RH = Red Head (Nail in wire)
- ROW = Right of Way
- RW = Nail with Reflective Round Washer
- R/W = Iron ROW Nail
- SFP = Steel 'T' Post
- SW = Nail with Square Metal Washer
- TP = Telephone Pedestal
- TW = Nail with Round Metal Washer
- WFP = Wood Fence Post
- X = X Noise



**W 1/4 Cor.**

Field



cor. C  
31-96-14

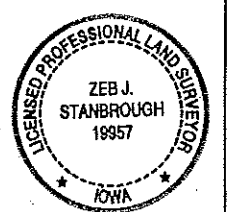
**Monument Description, Remarks, and Plan View:**

W 1/4 Cor. - History of Corner =  
Current County Engineer's ties indicate that corner is monumented with "Stone" with no ties shown.

**Corner Recovery =**

Searched 20' area at record distance from the SW Corner along a straight line from said SW Corner to the NW Corner with metal detector and found nothing. Searched 4.0'(East-West) x 4.0'(North-South) area at said record distance with tile probe to 4'± deep and found nothing. Excavated 4.0'± x 1.0' deep hole around 2" O.D. steel corner post stamped "8x10" and "1914-0" with concrete at base and found nothing. Searched 4.0'± area around said corner post with tile probe to 4'± deep and found nothing. The northerly adjoining land owner stated the steel corner post has always been the section corner as long as he remembers. Therefore, since there is record that corner was set, there is verbal evidence that corner post is regarded as section corner, and location of corner post matches fence line evidence well, accepted center of 2" O.D. steel corner post stamped "8x10" and "1914-0" as the correct corner. Corner post is in-line with fence line remnants East-West and South. All ties are plumb distance unless indicated otherwise.

This certificate is being prepared because there are no certificates on file for this corner



I hereby certify that this land surveying document was prepared and the related survey work was performed by me or under my direct personal supervision and that I am a duly licensed Land Surveyor under the laws of the State of Iowa.

*Zeb J. Stanbrough PLS*  
Zeb J. Stanbrough, PLS  
Date: 11-10-2011 License number: 19957  
My license renewal date is December 31, 2011  
Pages or sheets covered by this seal: 1 & 2

**List Corners to be Indexed**

Corners	Section	Twp	Range
W 1/4 Cor.	32	T96N	R14W
E 1/4 Cor.	32	T96N	R14W