

STEVE BUSSE P.O. BOX 241 508 ELM ST. ALLISON, IOWA 50602 319-267-2519

**UNITED STATES PUBLIC LAND SURVEY CORNER CERTIFICATE
 OF**

LAND SURVEY MONUMENTS SITUATED IN SECTION NO. 31, TOWNSHIP NO. 96 NORTH, RANGE
 NO. 14 WEST OF THE FIFTH PRINCIPAL MERIDIAN, CHICKASAW COUNTY, IOWA.
 PREVIOUSLY RECORDED IN N/A

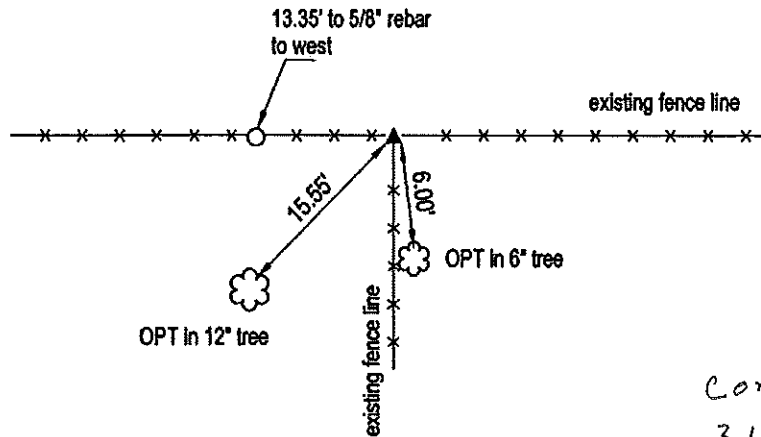
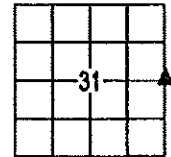
(SHOW REASON FOR PREPARING THIS CERTIFICATE, THE EVIDENCE AND DETAILED PROCEDURES USED IN ESTABLISHING THE
 CORNER POSITIONS AND MONUMENTATION FOUND OR PLACED.)

MONUMENT DESCRIPTION AND REMARKS:

Found no record of monument at this corner.. Searched in area using aerial map. Found 2" steel post on fence line to the East-West and South. Searched around post for stone but found nothing. Used base of post as corner. Used corner in survey in section 31.

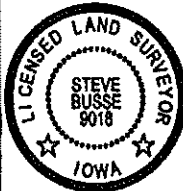

PLAN VIEW

(SHOW A MINIMUM OF THREE REFERENCE TIES TO DURABLE PHYSICAL OBJECTS, RELEVANT MONUMENTS AND PHYSICAL CONDITIONS THAT WILL ENABLE RECOVERY OF THE CORNER.)



Cor C
31-96-14

**EAST 1/4 CORNER
 2" ROUND STEEL POST**

	I HEREBY CERTIFY THAT THIS LAND SURVEYING DOCUMENT WAS PREPARED AND THE RELATED SURVEY WORK WAS PERFORMED BY ME OR UNDER MY DIRECT PERSONAL SUPERVISION AND THAT I AM A DULY LICENSED LAND SURVEYOR UNDER THE LAWS OF THE STATE OF IOWA.	G.P. = 2" GAS PIPE CONC MONU = CONCRETE MONUMENT W/ PIN & ALUM CAP *X NAILS* = CROSS NAILS IN WOOD POST OPT = PLASTIC TAG (O=ORANGE, Y=YELLOW) (00) RECORDED AS												
	 STEVE BUSSE LICENSE NUMBER 9018 MY LICENSE RENEWAL DATE IS DECEMBER 31, 2012 PAGES OR SHEETS COVERED BY THIS SEAL <u>1</u>	12/31/11 DATE	<table border="1"> <thead> <tr> <th colspan="4">LIST CORNERS TO BE INDEXED</th> </tr> <tr> <th>CORNER</th> <th>SECTION</th> <th>TOWNSHIP</th> <th>RANGE</th> </tr> </thead> <tbody> <tr> <td>EAST 1/4 COR.</td> <td>31</td> <td>96</td> <td>14</td> </tr> </tbody> </table>	LIST CORNERS TO BE INDEXED				CORNER	SECTION	TOWNSHIP	RANGE	EAST 1/4 COR.	31	96
LIST CORNERS TO BE INDEXED														
CORNER	SECTION	TOWNSHIP	RANGE											
EAST 1/4 COR.	31	96	14											